



Waterhouse Moor, Harlow, CM18 6BJ  
Guide Price £300,000

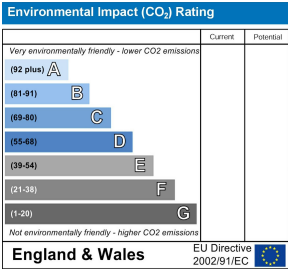
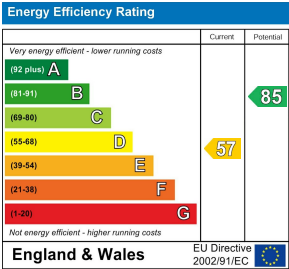
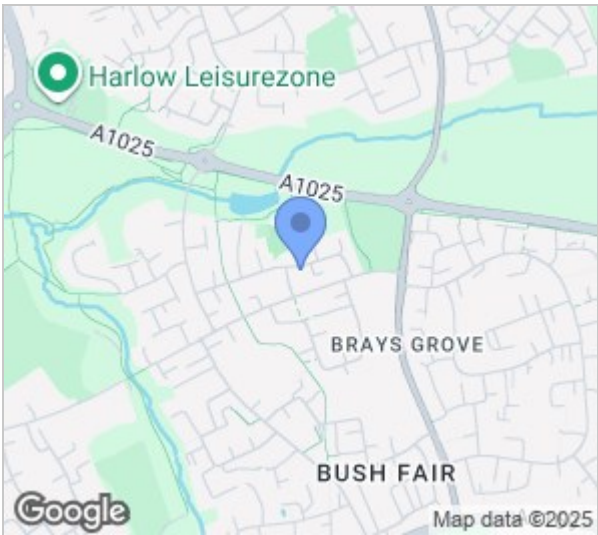
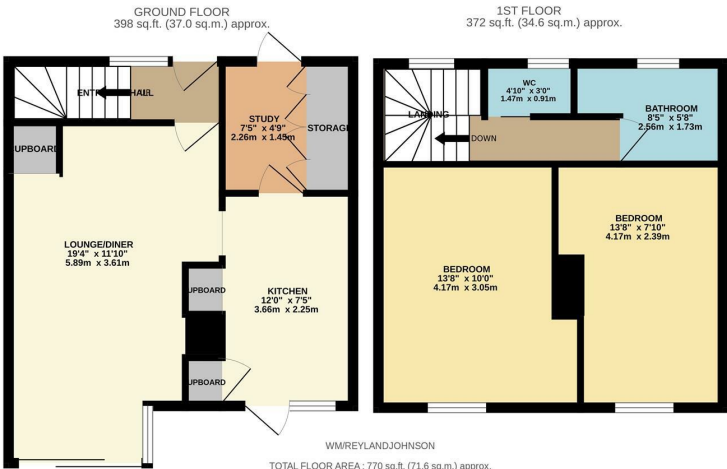




# Waterhouse Moor, Harlow, CM18 6BJ

\*\*Guide Price £300,000 to £315,000\*\*

This beautifully presented two double bedroom family home is located in the popular turning of Waterhouse Moor and includes a log cabin in the garden. The property comprises an entrance hallway leading to a large lounge/diner, modern fitted kitchen with a range of wall and base units and a study/utility room, whilst upstairs there are two double bedrooms, a family bathroom which has an additional shower cubicle, plus a separate WC. The south facing rear garden is mainly laid to lawn with patio and decked areas and a log cabin with electric and lighting. Waterhouse Moor is found in the Bush Fair area of Harlow, with excellent local schools, shops and open fields within walking distance.



These particulars, whilst believed to be accurate are set out as a general outline only for guidance and do not constitute any part of an offer or contract. Intending purchasers should not rely on them as statements of representation of fact, but must satisfy themselves by inspection or otherwise as to their accuracy. No person in this firms employment has the authority to make or give any representation or warranty in respect of the property.