



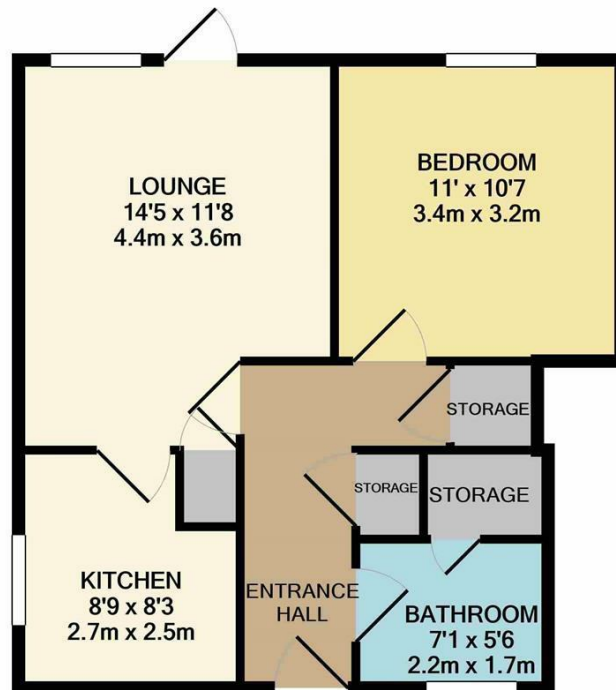
Church End, Harlow, CM19 5PF
£1,100 Per Month

- One Bedroom
- Unfurnished
- Lounge/Diner
- Own Garden
- Ground Floor
- Available Mid Feb 2026

Church End, Harlow, CM19 5PF

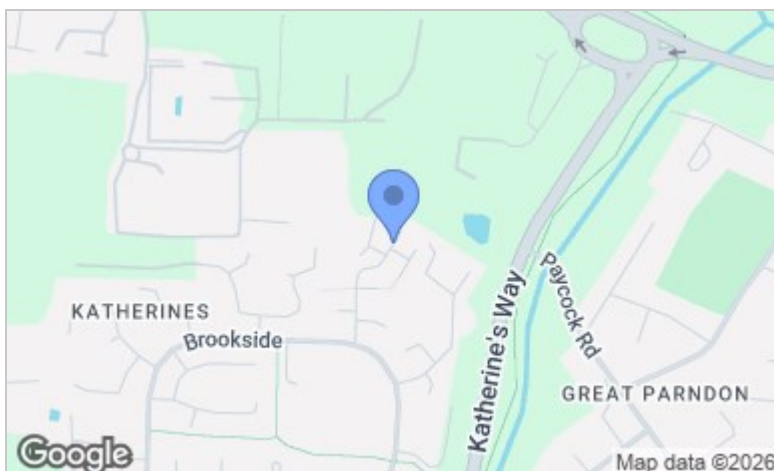
£1,100 Per Month

Available Mid February 2026 on an unfurnished basis. This one bedroom ground floor flat has generous accommodation consisting of an entrance hall, lounge/diner, double bedroom, bathroom and has its own rear garden. Located on the outskirts of town, the Katherines development benefits from having shops and schooling.



REYLANDJOHNSON/CE
TOTAL APPROX. FLOOR AREA 480 SQ.FT. (44.6 SQ.M.)

Whilst every attempt has been made to ensure the accuracy of the floor plan contained here, measurements of doors, windows, rooms and any other items are approximate and no responsibility is taken for any error, omission, or mis-statement. This plan is for illustrative purposes only and should be used as such by any prospective purchaser. The services, systems and appliances shown have not been tested and no guarantee as to their operability or efficiency can be given
Made with Metropix ©2020



Energy Efficiency Rating		
	Current	Potential
Very energy efficient - lower running costs		
(92 plus) A		
(81-91) B		
(69-80) C		
(55-68) D		
(39-54) E		
(21-38) F		
(1-20) G		
Not energy efficient - higher running costs		
68		76
England & Wales		
EU Directive 2002/91/EC		

Environmental Impact (CO ₂) Rating		
	Current	Potential
Very environmentally friendly - lower CO ₂ emissions		
(92 plus) A		
(81-91) B		
(69-80) C		
(55-68) D		
(39-54) E		
(21-38) F		
(1-20) G		
Not environmentally friendly - higher CO ₂ emissions		
64		73
England & Wales		
EU Directive 2002/91/EC		

These particulars, whilst believed to be accurate are set out as a general outline only for guidance and do not constitute any part of an offer or contract. Intending purchasers should not rely on them as statements of representation of fact, but must satisfy themselves by inspection or otherwise as to their accuracy. No person in this firm's employment has the authority to make or give any representation or warranty in respect of the property.

T. 01279 216216 E. info@rjestateagents.co.uk

1 Acorn Mews, Harlow, Essex, CM18 6NA www.rjestateagents.co.uk