

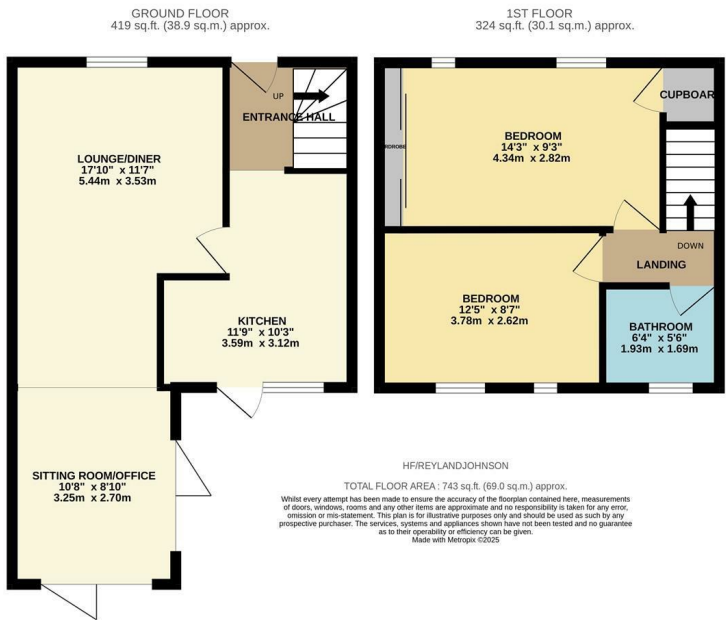


Hollyfield,, Harlow, CM19 4NA
£325,000



Hollyfield,, Harlow, CM19 4NA

This two double bedroom family home has been beautifully extended on the ground floor and is located in the popular area of Hollyfield, Harlow. As you enter there is a hallway leading to a modern kitchen with a range of fitted wall and base units and a cosy lounge/diner, which opens onto the beautiful extension with two sets of bi-fold doors. Upstairs there are two double bedrooms with fitted wardrobes to the master and a stunning family bathroom with a white three piece suite. The rear garden is mainly laid to lawn with two patio areas, a shed and rear access, with a lawn front garden. Hollyfield is located ideally near Staple Tye Shopping Centre with local schools, doctors and open fields within walking distance.



Energy Efficiency Rating		Current	Potential
Very energy efficient - lower running costs			
(92 plus) A			
(81-91) B			
(69-80) C			
(55-68) D			
(39-54) E			
(21-38) F			
(1-20) G			
Not energy efficient - higher running costs			
England & Wales		EU Directive 2002/91/EC	

Environmental Impact (CO ₂) Rating		Current	Potential
Very environmentally friendly - lower CO ₂ emissions			
(92 plus) A			
(81-91) B			
(69-80) C			
(55-68) D			
(39-54) E			
(21-38) F			
(1-20) G			
Not environmentally friendly - higher CO ₂ emissions			
England & Wales		EU Directive 2002/91/EC	

These particulars, whilst believed to be accurate are set out as a general outline only for guidance and do not constitute any part of an offer or contract. Intending purchasers should not rely on them as statements of representation of fact, but must satisfy themselves by inspection or otherwise as to their accuracy. No person in this firms employment has the authority to make or give any representation or warranty in respect of the property.