



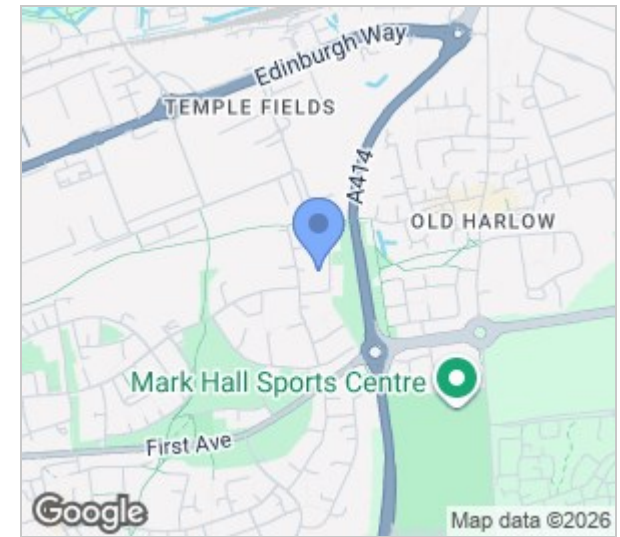
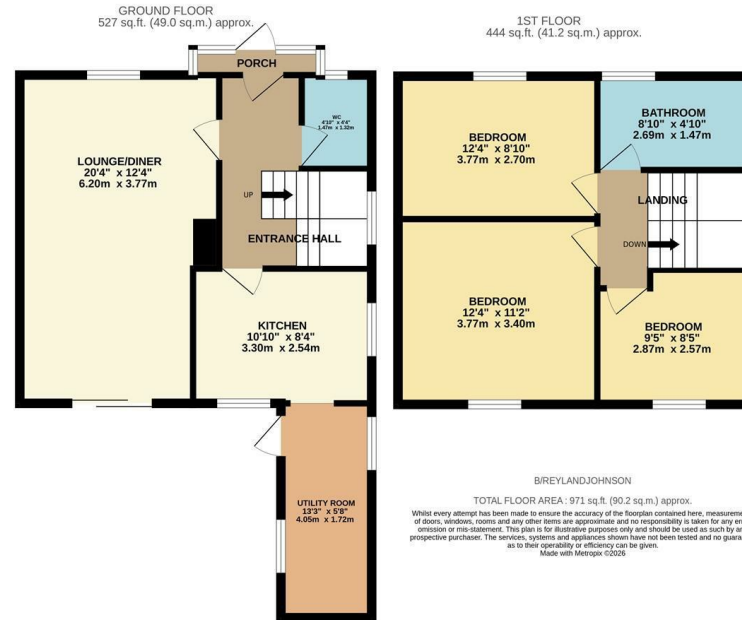
Broomfield, Harlow, CM20 2JZ
Guide Price £375,000

3 1 1 D

Broomfield, Harlow, CM20 2JZ

****Guide Price £375,000 to £400,000****

Offered with NO CHAIN is this well presented three bedroom semi detached family home, located in the popular Mark Hall North area, within walking distance of Harlow Mill Train Station. On the ground floor there is a porch and entrance hallway leading to a large lounge/diner, a bright kitchen with a range of fitted wall and base units, a matching utility room and a cloakroom/WC, whilst on the first floor there are three bedrooms and a stunning family bathroom with a white three piece suite. The south facing rear garden is mainly laid to lawn with a summer house, large patio and side access leading to the front garden. Broomfield is ideally located within walking distance of excellent local schools, shops and open fields.



Energy Efficiency Rating			Environmental Impact (CO ₂) Rating		
Current	Potential		Current	Potential	
Very energy efficient - lower running costs (92 plus) A (81-91) B (69-80) C (55-68) D (39-54) E (21-38) F (1-20) G Not energy efficient - higher running costs			Very environmentally friendly - lower CO ₂ emissions (82 plus) A (61-81) B (49-60) C (35-48) D (21-38) E (1-20) F (1-20) G Not environmentally friendly - higher CO ₂ emissions		
		79			
England & Wales	EU Directive 2002/91/EC		England & Wales	EU Directive 2002/91/EC	

These particulars, whilst believed to be accurate are set out as a general outline only for guidance and do not constitute any part of an offer or contract. Intending purchasers should not rely on them as statements of representation of fact, but must satisfy themselves by inspection or otherwise as to their accuracy. No person in this firm's employment has the authority to make or give any representation or warranty in respect of the property.

T. 01279 216216 E. info@rjestateagents.co.uk

1 Acorn Mews, Harlow, Essex, CM18 6NA www.rjestateagents.co.uk