

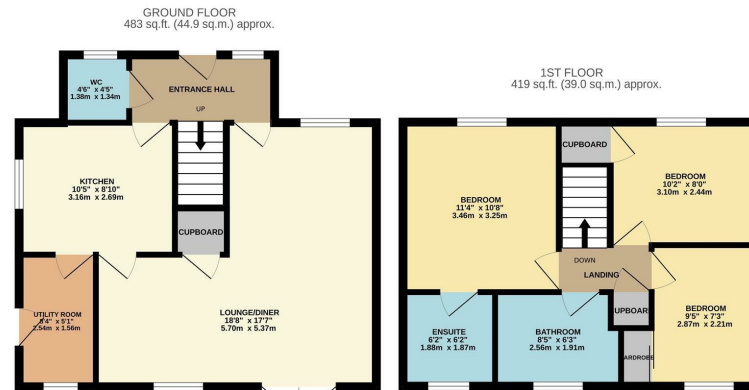


Albert Gardens, Church Langley, CM17 9QF
£1,850 Per Month

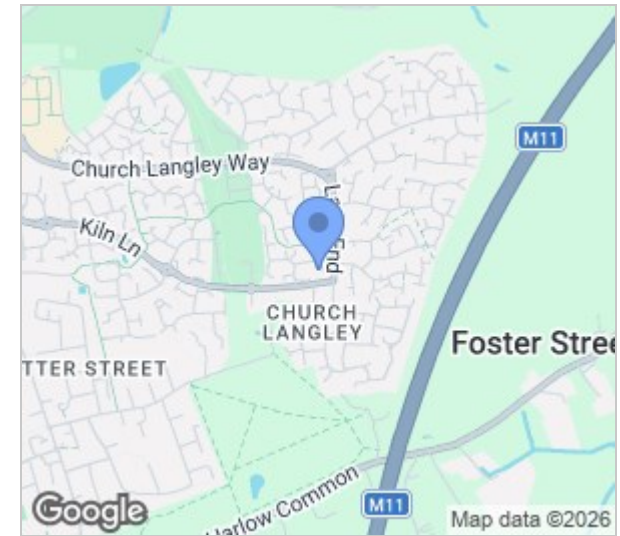
3 2 2 C

Albert Gardens, Church Langley, CM17 9QF

An immaculate three bedroom detached home, available early September on an unfurnished basis. The property is situated in a small cul-de-sac, close to the Henry Moore Primary school. Accommodation comprises of an entrance hall, ground floor W.C, 'L Shape' lounge/diner with French doors to the garden, fitted kitchen and utility room. The first floor has a family bathroom and three bedrooms with the main bedroom having an en-suite shower. There is also a garage with driveway and a pretty, West facing rear garden.



Whilst every attempt has been made to ensure the accuracy of the floorplan contained here, measurements of rooms, windows, rooms and any other items are approximate and no responsibility is taken for any error, omission or mis-statement. This plan is for illustrative purposes only and should be used as such by any prospective purchaser. The services, systems and appliances shown have not been tested and no guarantee as to their operability or efficiency can be given.
Made with Metrepx 12025



Energy Efficiency Rating		Current	Potential
Very energy efficient - lower running costs			
(92 plus) A			
(81-91) B			
(69-80) C			
(55-68) D			
(39-54) E			
(21-38) F			
(1-20) G			
Not energy efficient - higher running costs			
England & Wales	EU Directive 2002/91/EC	70	76

Environmental Impact (CO ₂) Rating		Current	Potential
Very environmentally friendly - lower CO ₂ emissions			
(92 plus) A			
(81-91) B			
(69-80) C			
(55-68) D			
(39-54) E			
(21-38) F			
(1-20) G			
Not environmentally friendly - higher CO ₂ emissions			
England & Wales	EU Directive 2002/91/EC		

These particulars, whilst believed to be accurate are set out as a general outline only for guidance and do not constitute any part of an offer or contract. Intending purchasers should not rely on them as statements of representation of fact, but must satisfy themselves by inspection or otherwise as to their accuracy. No person in this firm's employment has the authority to make or give any representation or warranty in respect of the property.

T. 01279 216216 E. info@rjestateagents.co.uk

1 Acorn Mews, Harlow, Essex, CM18 6NA www.rjestateagents.co.uk