



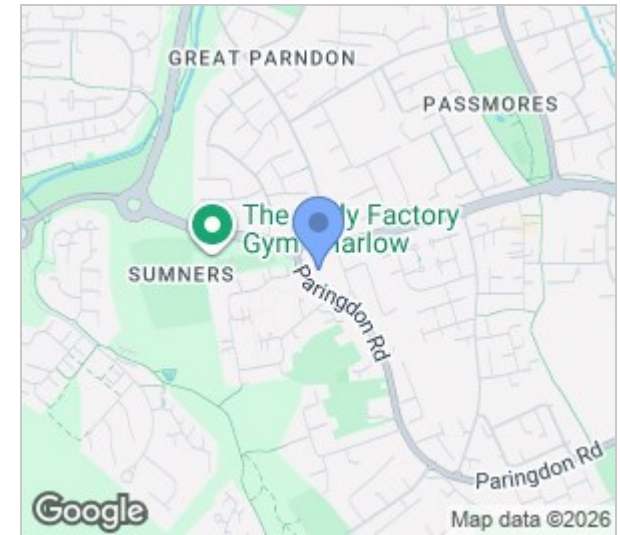
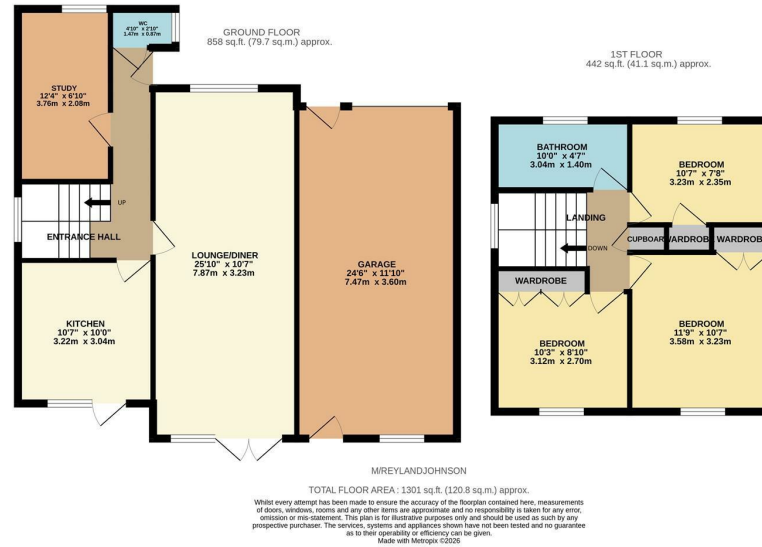
Millersdale, Harlow, CM19 4QP
Guide Price £500,000

3 1 2 C

Millersdale, Harlow, CM19 4QP

Guide Price £500,000 to £550,000

Located in a quiet cul-de-sac is this rarely available three bedroom link detached family home that has huge potential for further improvements, with a large driveway and garage. On the ground floor there is an entrance hallway leading to a huge lounge/diner, a modern kitchen with a range of fitted wall and base units, a study and cloakroom/WC. Upstairs there are three double bedrooms, all of which have fitted wardrobes and a family bathroom with a white three piece suite. Outside, the unoverlooked rear garden is mainly laid to lawn with a patio area, mature trees and shrubs, a greenhouse and direct access to the huge garage, with the large driveway and pretty garden to the front. Millersdale is located just off Paringdon Road, within walking distance of local schools, shops and open fields.



Energy Efficiency Rating		Current	Potential
Very energy efficient - lower running costs			
(92 plus)	A		
(81-91)	B		
(69-80)	C		
(55-68)	D		
(39-54)	E		
(21-38)	F		
(1-20)	G		
Not energy efficient - higher running costs			
England & Wales		69	77
	EU Directive 2002/91/EC		

Environmental Impact (CO ₂) Rating		Current	Potential
Very environmentally friendly - lower CO ₂ emissions			
(92 plus)	A		
(81-91)	B		
(69-80)	C		
(55-68)	D		
(39-54)	E		
(21-38)	F		
(1-20)	G		
Not environmentally friendly - higher CO ₂ emissions			
England & Wales			
	EU Directive 2002/91/EC		

These particulars, whilst believed to be accurate are set out as a general outline only for guidance and do not constitute any part of an offer or contract. Intending purchasers should not rely on them as statements of representation of fact, but must satisfy themselves by inspection or otherwise as to their accuracy. No person in this firm's employment has the authority to make or give any representation or warranty in respect of the property.

T. 01279 216216 E. info@rjestateagents.co.uk

1 Acorn Mews, Harlow, Essex, CM18 6NA www.rjestateagents.co.uk