

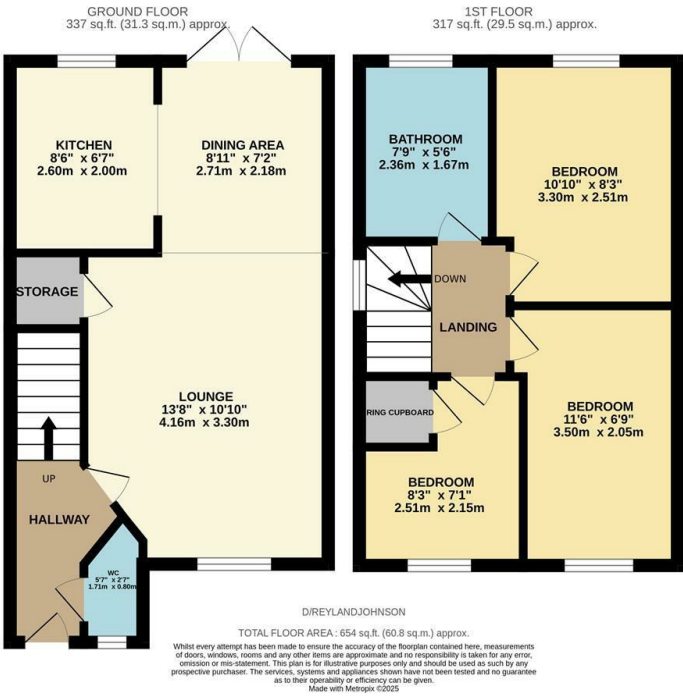


Davenport, Church Langley, CM17 9TJ
Guide Price £400,000



Davenport, Church Langley, CM17 9TJ

****Guide Price £400,000 - £410,000**** Located in a quiet cul-de-sac is this immaculately presented three bedroom end terrace family home with a large corner garden and a driveway. On the ground floor there is an open plan lounge and dining area, a modern kitchen with a range of fitted wall and base units, plus a cloakroom/WC. Upstairs there are three bedrooms and a stunning family bathroom with a white three piece suite and built in TV. The rear garden is mainly laid to lawn with a mix of patio and decked seating areas, a shed and side access leading out to the driveway to the front and side. Davenport is found with Chelsea Gardens just off Lane End in the desirable Church Langley Development, within walking distance of excellent local schools, shops and open fields.



Energy Efficiency Rating		
	Current	Potential
Very energy efficient - lower running costs		
(92 plus) A		89
(81-91) B		
(69-80) C		73
(55-68) D		
(39-54) E		
(21-38) F		
(1-20) G		
Not energy efficient - higher running costs		
England & Wales	EU Directive 2002/91/EC	

Environmental Impact (CO ₂) Rating		
	Current	Potential
Very environmentally friendly - lower CO ₂ emissions		
(92 plus) A		
(81-91) B		
(69-80) C		
(55-68) D		
(39-54) E		
(21-38) F		
(1-20) G		
Not environmentally friendly - higher CO ₂ emissions		
England & Wales	EU Directive 2002/91/EC	

These particulars, whilst believed to be accurate are set out as a general outline only for guidance and do not constitute any part of an offer or contract. Intending purchasers should not rely on them as statements of representation of fact, but must satisfy themselves by inspection or otherwise as to their accuracy. No person in this firms employment has the authority to make or give any representation or warranty in respect of the property.