



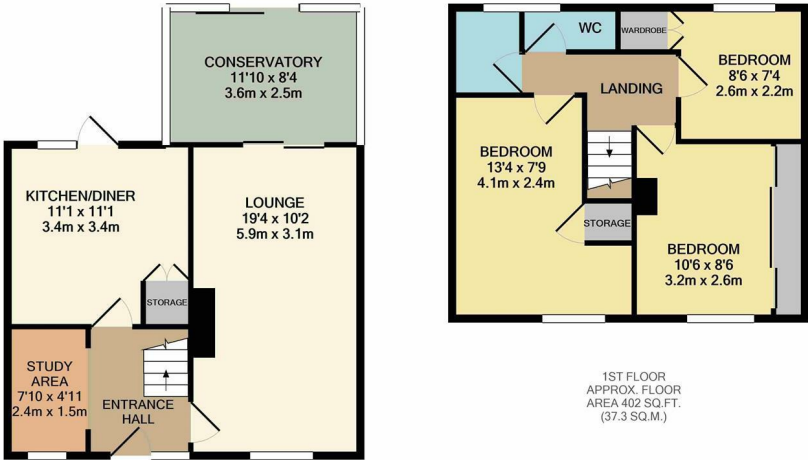
Primrose Field, Harlow, CM18 6QT  
£1,600 Per Month





# Primrose Field, Harlow, CM18 6QT

A three bedroom end of terrace house in the popular location of Primrose Field which is located close to Bush Fair shopping centre. The property comprises an entrance hall with study area leading to a lounge, kitchen with a range of fitted wall & base level units, landing, three bedrooms and a family bathroom with a separate WC. Outside the rear garden is mostly paved with a decking area. The property is available NOW on an unfurnished basis.

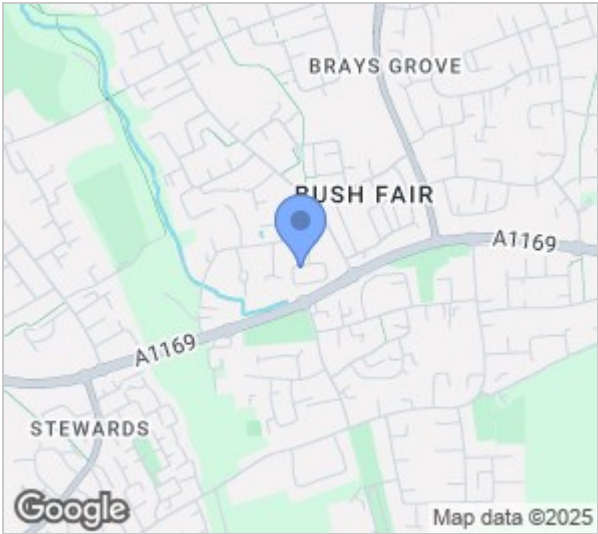


GROUND FLOOR  
APPROX. FLOOR  
AREA 497 SQ.FT.  
(46.2 SQ.M.)

REYLAND/JOHNSON/PF  
TOTAL APPROX. FLOOR AREA 899 SQ.FT. (83.5 SQ.M.)

Whilst every attempt has been made to ensure the accuracy of the floor plan contained here, measurements of doors, windows, rooms and any other items are approximate and no responsibility is taken for any error, omission, or mis-statement. This plan is for illustrative purposes only and should be used as such by any prospective purchaser. The services, systems and appliances shown have not been tested and no guarantee as to their operability or efficiency can be given

Made with Metropix ©2021



Energy Efficiency Rating		
	Current	Potential
Very energy efficient - lower running costs		
(92 plus) <b>A</b>		
(81-91) <b>B</b>		85
(69-80) <b>C</b>		
(55-68) <b>D</b>	71	
(39-54) <b>E</b>		
(21-38) <b>F</b>		
(1-20) <b>G</b>		
Not energy efficient - higher running costs		
England & Wales		EU Directive 2002/91/EC

Environmental Impact (CO <sub>2</sub> ) Rating		
	Current	Potential
Very environmentally friendly - lower CO <sub>2</sub> emissions		
(92 plus) <b>A</b>		
(81-91) <b>B</b>		87
(69-80) <b>C</b>		
(55-68) <b>D</b>		72
(39-54) <b>E</b>		
(21-38) <b>F</b>		
(1-20) <b>G</b>		
Not environmentally friendly - higher CO <sub>2</sub> emissions		
England & Wales		EU Directive 2002/91/EC

These particulars, whilst believed to be accurate are set out as a general outline only for guidance and do not constitute any part of an offer or contract. Intending purchasers should not rely on them as statements of representation of fact, but must satisfy themselves by inspection or otherwise as to their accuracy. No person in this firms employment has the authority to make or give any representation or warranty in respect of the property.