



Long Banks, Harlow, CM18 7PG  
£310,000

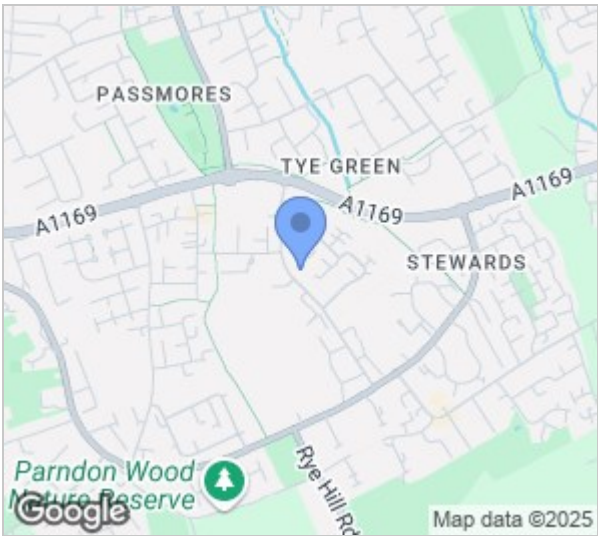
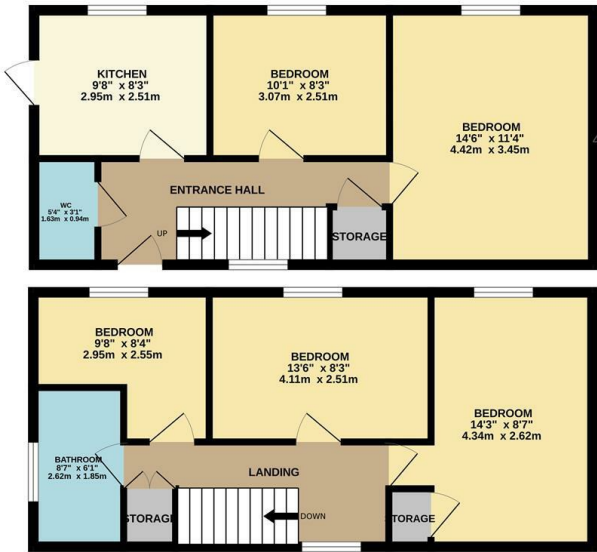




# Long Banks, Harlow, CM18 7PG

## HMO INVESTMENT OPPORTUNITY!

Offered with no onward chain is this detached five bedroom, fully licensed HMO with a current monthly income of £2825pcm (10.9% yield), which could be increased to £3340pcm (12.9% yield). On the ground floor are two double bedrooms, a kitchen with a range of fitted wall and base units and a cloakroom/WC, whilst on the first floor are two further double bedrooms, a single bedroom and a bathroom with a white three piece suite. Outside the rear garden is mainly laid to lawn with a patio area and side access. Long Banks is located in the Staple Tye area of Harlow, with easy access to local amenities and transport links.



Energy Efficiency Rating		
	Current	Potential
Very energy efficient - lower running costs		
(92 plus) <b>A</b>		
(81-91) <b>B</b>		
(69-80) <b>C</b>		
(55-68) <b>D</b>		
(39-54) <b>E</b>		
(21-38) <b>F</b>		
(1-20) <b>G</b>		
Not energy efficient - higher running costs		
England & Wales	EU Directive 2002/91/EC	

Environmental Impact (CO <sub>2</sub> ) Rating		
	Current	Potential
Very environmentally friendly - lower CO <sub>2</sub> emissions		
(92 plus) <b>A</b>		
(81-91) <b>B</b>		
(69-80) <b>C</b>		
(55-68) <b>D</b>		
(39-54) <b>E</b>		
(21-38) <b>F</b>		
(1-20) <b>G</b>		
Not environmentally friendly - higher CO <sub>2</sub> emissions		
England & Wales	EU Directive 2002/91/EC	

These particulars, whilst believed to be accurate are set out as a general outline only for guidance and do not constitute any part of an offer or contract. Intending purchasers should not rely on them as statements of representation of fact, but must satisfy themselves by inspection or otherwise as to their accuracy. No person in this firms employment has the authority to make or give any representation or warranty in respect of the property.

T. 01279 216216 E. info@rjestateagents.co.uk

1 Acorn Mews, Harlow, Essex, CM18 6NA www.rjestateagents.co.uk