



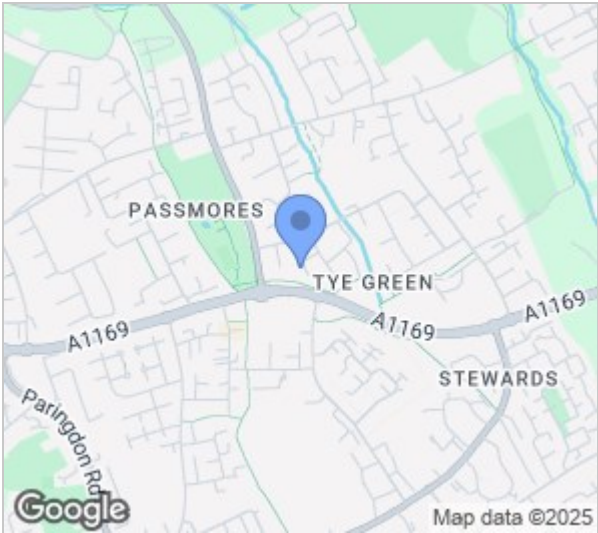
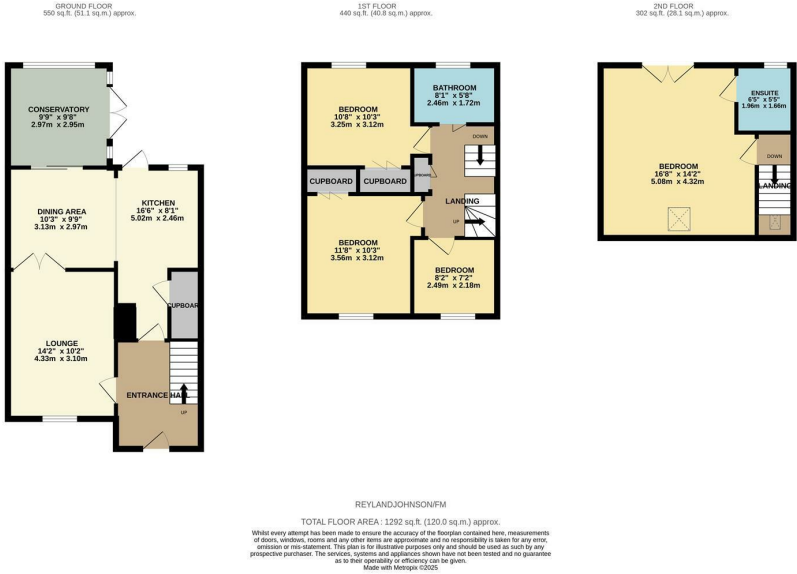
Finchmoor, Harlow, CM18 6UB
Guide Price £450,000



Finchmoor, Harlow, CM18 6UB

(Guide Price £450,000 - £475,000)

A four bedroom semi detached house with a conservatory, garage and driveway for several vehicles. The ground floor comprises an entrance hall leading to a lounge, kitchen/diner which is open-plan with a range of fitted wall & base level units with work-surface areas and a conservatory. The first floor offers three bedrooms and a family bathroom with a white three piece-suite with a separate shower cubicle with the top floor offering a master bedroom with en-suite bathroom. Outside the rear garden is westerly facing and is mostly laid to lawn with a patio area and side access. Other benefits include an office and WC facilities to the rear of the garage. Finchmoor is a popular area located close to Staple Tye which offers a range of local shops and schools nearby.



Energy Efficiency Rating			Environmental Impact (CO ₂) Rating		
	Current	Potential		Current	Potential
Very energy efficient - lower running costs			Very environmentally friendly - lower CO ₂ emissions		
(92 plus) A			(92 plus) A		
(81-91) B			(81-91) B		
(69-80) C			(69-80) C		
(55-68) D			(55-68) D		
(39-54) E			(39-54) E		
(21-38) F			(21-38) F		
(1-20) G			(1-20) G		
Not energy efficient - higher running costs			Not environmentally friendly - higher CO ₂ emissions		
England & Wales	EU Directive 2002/91/EC		England & Wales	EU Directive 2002/91/EC	

These particulars, whilst believed to be accurate are set out as a general outline only for guidance and do not constitute any part of an offer or contract. Intending purchasers should not rely on them as statements of representation of fact, but must satisfy themselves by inspection or otherwise as to their accuracy. No person in this firms employment has the authority to make or give any representation or warranty in respect of the property.