



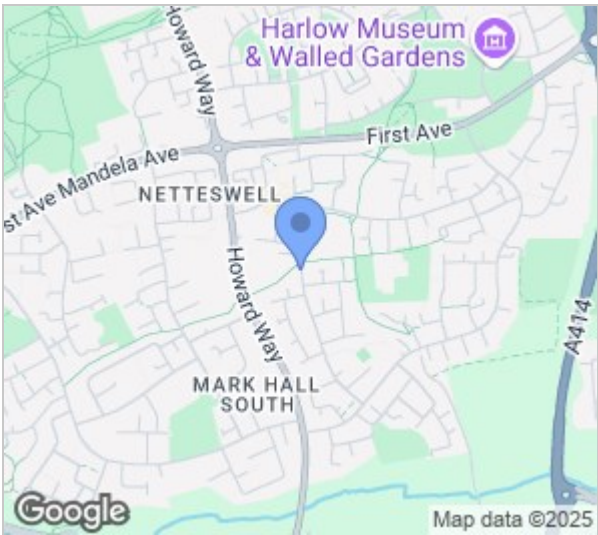
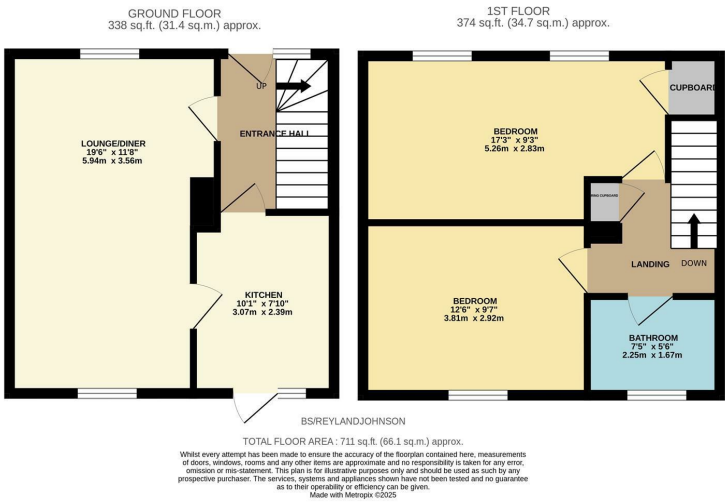
Blackbush Spring, Harlow, CM20 3DY
Guide Price £300,000



Blackbush Spring, Harlow, CM20 3DY

****Guide Price £300,000 to £315,000****

With potential for a large driveway, this two DOUBLE bedroom family home is located in the popular family area of Blackbush Spring. As you enter there is an entrance hallway leading to a large lounge/diner and kitchen with a range of fitted wall and base units, whilst upstairs there are two large double bedrooms and a beautiful, newly fitted family bathroom. Outside, the rear garden is mainly laid to lawn with a patio area, brick built sheds and side access leading out to the front garden, which would be an ideal driveway. Blackbush Spring is located close to the Stow shopping area of Harlow, within a stones throw of excellent local schools, open playing fields and the shops.



Energy Efficiency Rating			Environmental Impact (CO ₂) Rating		
	Current	Potential		Current	Potential
Very energy efficient - lower running costs			Very environmentally friendly - lower CO ₂ emissions		
(92 plus)	A		(92 plus)	A	
(81-91)	B		(81-91)	B	
(69-80)	C		(69-80)	C	
(55-68)	D		(55-68)	D	
(39-54)	E		(39-54)	E	
(21-38)	F		(21-38)	F	
(1-20)	G		(1-20)	G	
Not energy efficient - higher running costs			Not environmentally friendly - higher CO ₂ emissions		
England & Wales			England & Wales		
EU Directive 2002/91/EC			EU Directive 2002/91/EC		

These particulars, whilst believed to be accurate are set out as a general outline only for guidance and do not constitute any part of an offer or contract. Intending purchasers should not rely on them as statements of representation of fact, but must satisfy themselves by inspection or otherwise as to their accuracy. No person in this firms employment has the authority to make or give any representation or warranty in respect of the property.