



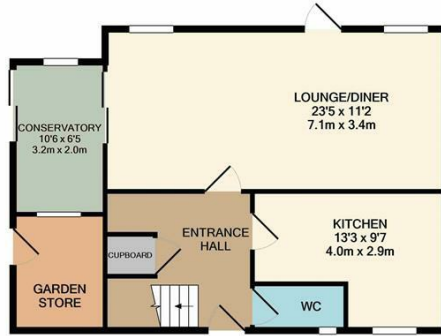
Feryngs Close, Old Harlow, CM17 0EH
£1,350 Per Month

- Three Bedrooms
- End Of Terrace
- Recently Re-Decorated
- Lounge/Diner
- Corner Plot Garden
- Available End March 22
- Conservatory
- Unfurnished
- Popular Location

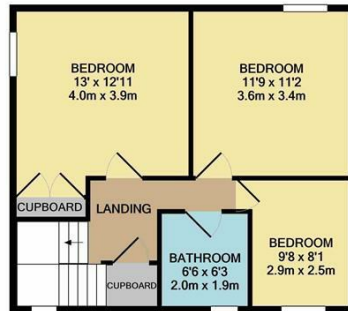
Feryngs Close, Old Harlow, CM17 0EH

£1,350 Per Month

A recently re-decorated three bedroom end of terraced home with corner plot garden. The property has an entrance hall, ground floor W.C, lounge/diner, conservatory and fitted kitchen which has a range of fitted wall and base units. The first floor has three bedrooms and a family bathroom, the large garden has patio and lawn areas as well as a wooden shed and rear access. Feryngs Close is tucked away in a little known cul-de-sac, close to Harlowbury School and opposite Watlington Road. Available End Of March 2022 on an Unfurnished basis.



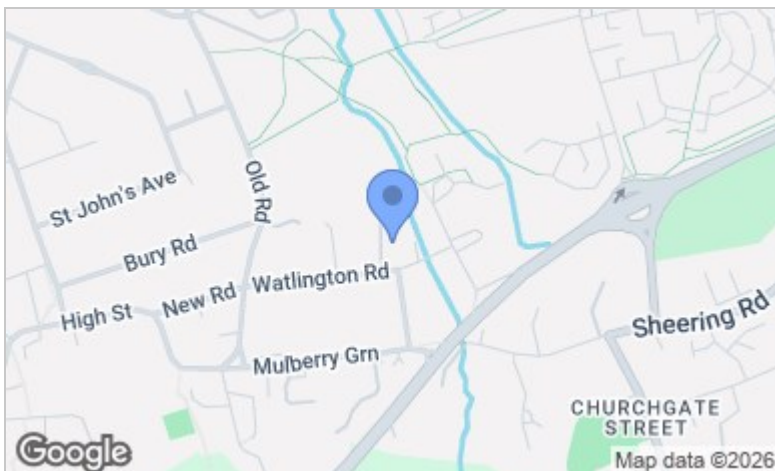
GROUND FLOOR
APPROX. FLOOR
AREA 603 SQ.FT.
(56.0 SQ.M.)



1ST FLOOR
APPROX. FLOOR
AREA 486 SQ.FT.
(45.1 SQ.M.)

REYLANDJOHNSON/FC
TOTAL APPROX. FLOOR AREA 1089 SQ.FT. (101.2 SQ.M.)

Whilst every attempt has been made to ensure the accuracy of the floor plan contained here, measurements of doors, windows, rooms and any other items are approximate and no responsibility is taken for any error, omission, or mis-statement. This plan is for illustrative purposes only and should be used as such by any prospective purchaser. The services, systems and appliances shown have not been tested and no guarantee as to their operability or efficiency can be given
Made with Metropix ©2021



Energy Efficiency Rating		Current	Potential
Very energy efficient - lower running costs			
(92 plus) A			85
(81-91) B			
(69-80) C			
(55-68) D		66	
(39-54) E			
(21-38) F			
(1-20) G			
Not energy efficient - higher running costs			
England & Wales		EU Directive 2002/91/EC	

Environmental Impact (CO ₂) Rating		Current	Potential
Very environmentally friendly - lower CO ₂ emissions			
(92 plus) A			66
(81-91) B			
(69-80) C			
(55-68) D			
(39-54) E			
(21-38) F			
(1-20) G			
Not environmentally friendly - higher CO ₂ emissions			
England & Wales		EU Directive 2002/91/EC	

These particulars, whilst believed to be accurate are set out as a general outline only for guidance and do not constitute any part of an offer or contract. Intending purchasers should not rely on them as statements of representation of fact, but must satisfy themselves by inspection or otherwise as to their accuracy. No person in this firm's employment has the authority to make or give any representation or warranty in respect of the property.