

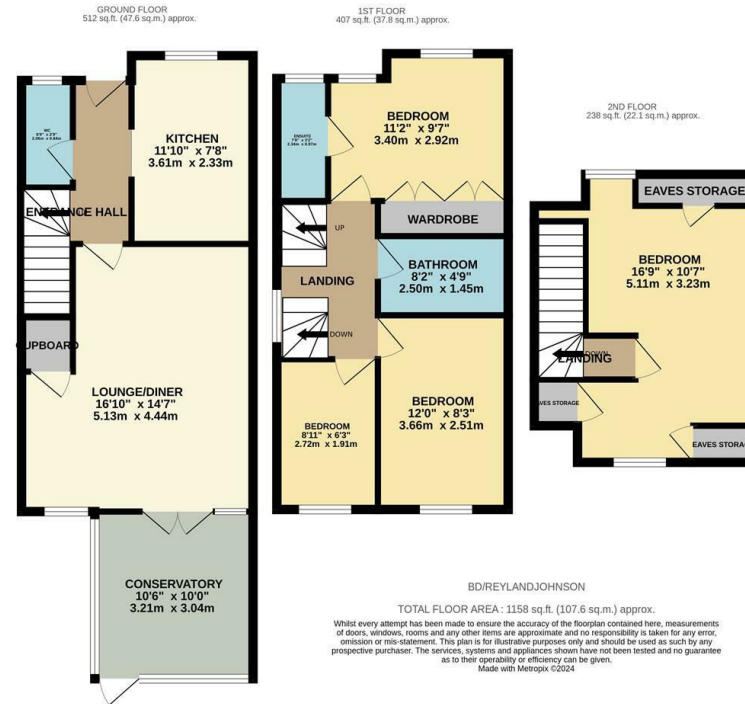
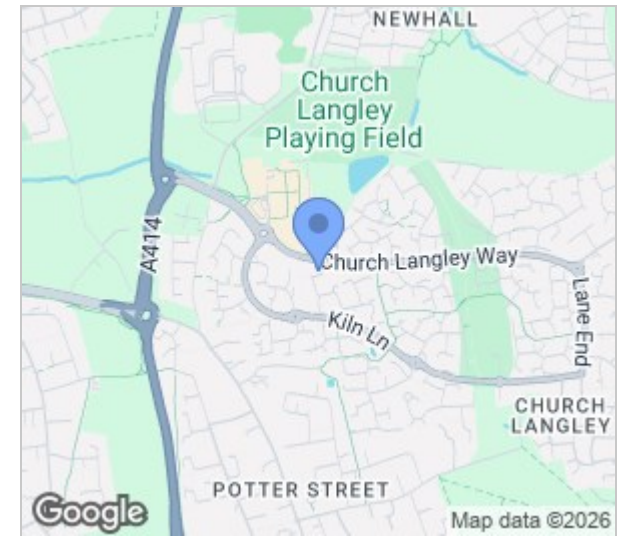


Bentley Drive, Harlow, CM17 9PA
Guide Price £400,000

4 2 1 D

Bentley Drive, Harlow, CM17 9PA

****Guide Price £400,000 - £410,000**** Offered with no onward chain is this extended three bedroom semi detached family home, tucked away in a quiet cul-de-sac. On the ground floor there is an open plan lounge/diner, kitchen with a range of fitted wall and base units, conservatory and a cloakroom/WC. Upstairs there are three bedrooms with an en-suite and fitted wardrobes to the master, whilst on the entire top floor is the master bedroom with fitted wardrobes and eaves storage. Outside the rear garden is mainly patio and gravel, with side access out to the two allocated parking spaces. Bentley Drive is located just off Kiln Lane, within walking distance of excellent local schools, shops and open fields.



Energy Efficiency Rating		Environmental Impact (CO ₂) Rating			
Very energy efficient - lower running costs	Current	Potential	Very environmentally friendly - lower CO ₂ emissions	Current	Potential
(92 plus) A			(92 plus) A		
(81-91) B			(81-91) B		
(69-80) C			(69-80) C		
(55-68) D			(55-68) D		
(39-54) E			(39-54) E		
(21-38) F			(21-38) F		
(1-20) G			(1-20) G		
Not energy efficient - higher running costs			Not environmentally friendly - higher CO ₂ emissions		
England & Wales	EU Directive 2002/91/EC	86	England & Wales	EU Directive 2002/91/EC	63

These particulars, whilst believed to be accurate are set out as a general outline only for guidance and do not constitute any part of an offer or contract. Intending purchasers should not rely on them as statements of representation of fact, but must satisfy themselves by inspection or otherwise as to their accuracy. No person in this firm's employment has the authority to make or give any representation or warranty in respect of the property.