

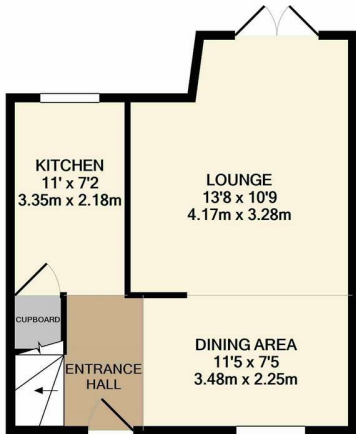


Great Brays, Harlow, CM18 6DW
£315,000

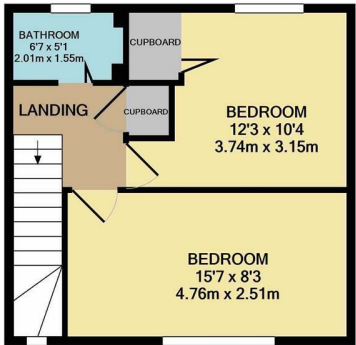


Great Brays, Harlow, CM18 6DW

Situated overlooking a small green is this immaculate two double bedroom end of terrace house, with a large garden. The property has an open plan feel on the ground floor with a large lounge/diner and a modern kitchen with a range of wall and base units, whilst upstairs there are two double bedrooms and a stunning family bathroom with a white three piece-suite. Outside the westerly facing rear garden is mostly laid to lawn with a patio area and side access. Great Brays is located close to Bush Fair, which benefits from a range of local shops, schools and playing fields.



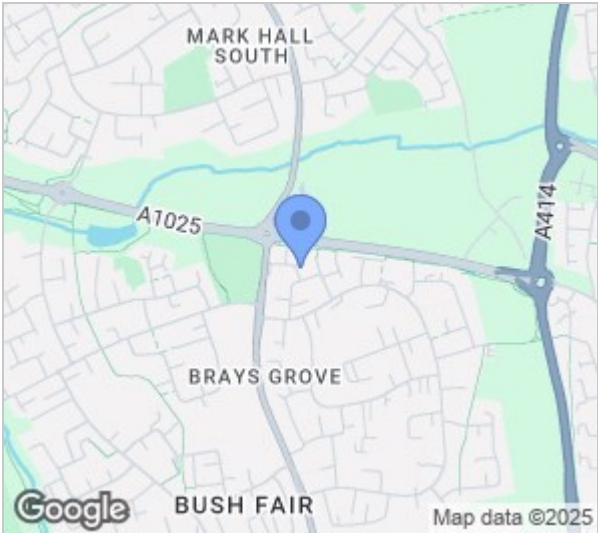
GROUND FLOOR
APPROX. FLOOR
AREA 368 SQ.FT.
(34.2 SQ.M.)



1ST FLOOR
APPROX. FLOOR
AREA 337 SQ.FT.
(31.3 SQ.M.)

REYLANDJOHNSON/BC
TOTAL APPROX. FLOOR AREA 705 SQ.FT. (65.5 SQ.M.)

Whilst every attempt has been made to ensure the accuracy of the floor plan contained here, measurements of doors, windows, rooms and any other items are approximate and no responsibility is taken for any error, omission, or mis-statement. This plan is for illustrative purposes only and should be used as such by any prospective purchaser. The services, systems and appliances shown have not been tested and no guarantee as to their operability or efficiency can be given
Made with Metropix ©2022



Energy Efficiency Rating		
	Current	Potential
Very energy efficient - lower running costs		
(92 plus) A		
(81-91) B		84
(69-80) C		
(55-68) D		69
(39-54) E		
(21-38) F		
(1-20) G		
Not energy efficient - higher running costs		
England & Wales	EU Directive 2002/91/EC	

Environmental Impact (CO ₂) Rating		
	Current	Potential
Very environmentally friendly - lower CO ₂ emissions		
(92 plus) A		
(81-91) B		
(69-80) C		
(55-68) D		
(39-54) E		
(21-38) F		
(1-20) G		
Not environmentally friendly - higher CO ₂ emissions		
England & Wales	EU Directive 2002/91/EC	

These particulars, whilst believed to be accurate are set out as a general outline only for guidance and do not constitute any part of an offer or contract. Intending purchasers should not rely on them as statements of representation of fact, but must satisfy themselves by inspection or otherwise as to their accuracy. No person in this firms employment has the authority to make or give any representation or warranty in respect of the property.