

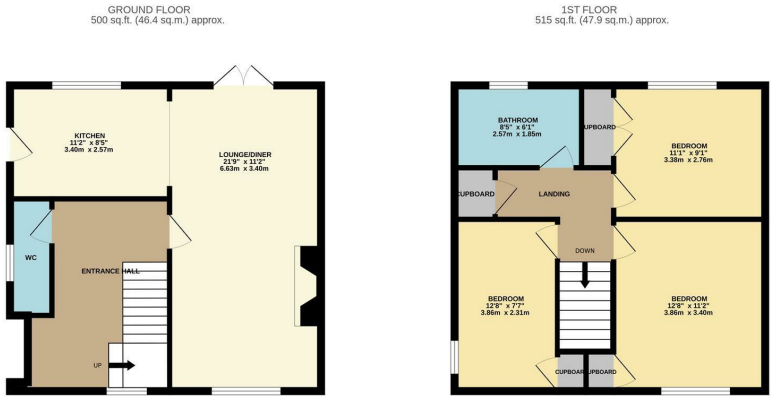


The Chantry, Harlow, CM20 2LX
£375,000

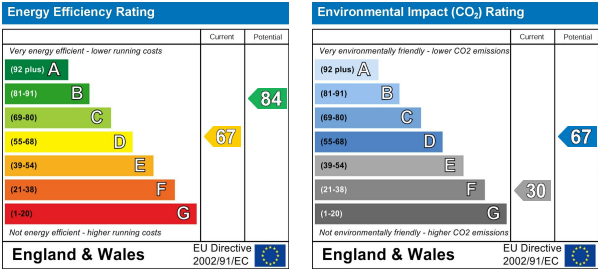


The Chantry, Harlow, CM20 2LX

Situated in a conservation area is this rarely available three bedroom end of terrace house with views overlooking the fields and Church of St Mary-at-Latton. The property comprises an entrance hall leading to a cloakroom/WC, lounge/diner, kitchen with a range of fitted wall & base units, landing, three good size bedrooms and a bathroom with a white three piece-suite. Outside the rear garden is laid to lawn with a patio area and side access. The Chantry is located in the Mark Hall North area and benefits from local shops, schools and Harlow Town Park nearby. Chain Free.



REYLAND/JOHNSON/TC
TOTAL FLOOR AREA: 1015 sq.ft. (94.3 sq.m.) approx.
While every attempt has been made to ensure the accuracy of the Brochure contained here, measurements of doors, windows, rooms and any other items are approximate and no responsibility is taken for any error, omission or misstatement. The plan is for guidance purposes only and should be used as such by any prospective purchaser. The services, systems and appliances shown have not been tested and no guarantee as to their operability or efficiency can be given.
Made with Metropix i5025



These particulars, whilst believed to be accurate are set out as a general outline only for guidance and do not constitute any part of an offer or contract. Intending purchasers should not rely on them as statements of representation of fact, but must satisfy themselves by inspection or otherwise as to their accuracy. No person in this firms employment has the authority to make or give any representation or warranty in respect of the property.