

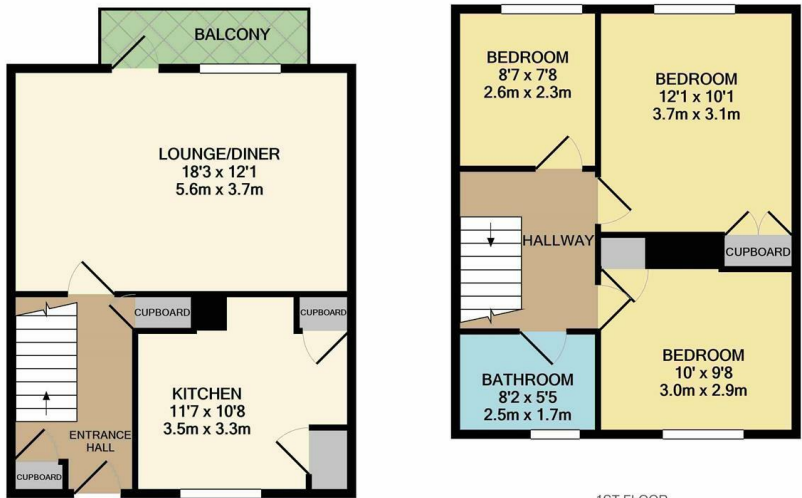


Wedhey, Harlow, CM19 4AF
£1,400 Per Month



Wedhey, Harlow, CM19 4AF

A three bedroom split level maisonette with its own balcony. The property comprises an entrance hall leading to a lounge/diner with access to the balcony, kitchen with a range of fitted wall & base level units, landing, three bedrooms and a bathroom with a three piece-suite. Wedhey is located in central Harlow and is just a short walk to Harlow town centre, Princess Alexandra Hospital and Harlow train station. Available Mid/late June on an unfurnished basis.



GROUND FLOOR
APPROX. FLOOR
AREA 413 SQ.FT.
(38.4 SQ.M.)

1ST FLOOR
APPROX. FLOOR
AREA 410 SQ.FT.
(38.1 SQ.M.)

REYLANDJOHNSON/WD
TOTAL APPROX. FLOOR AREA 823 SQ.FT. (76.4 SQ.M.)
Whilst every attempt has been made to ensure the accuracy of the floor plan contained here, measurements of doors, windows, rooms and any other items are approximate and no responsibility is taken for any error, omission, or mis-statement. This plan is for illustrative purposes only and should be used as such by any prospective purchaser. The services, systems and appliances shown have not been tested and no guarantee as to their operability or efficiency can be given
Made with Metropix ©2021



Energy Efficiency Rating		
	Current	Potential
Very energy efficient - lower running costs		
(92 plus) A		
(81-91) B		
(69-80) C		
(55-68) D		
(39-54) E		
(21-38) F		
(1-20) G		
Not energy efficient - higher running costs		
England & Wales	EU Directive 2002/91/EC	

Environmental Impact (CO ₂) Rating		
	Current	Potential
Very environmentally friendly - lower CO ₂ emissions		
(92 plus) A		
(81-91) B		
(69-80) C		
(55-68) D		
(39-54) E		
(21-38) F		
(1-20) G		
Not environmentally friendly - higher CO ₂ emissions		
England & Wales	EU Directive 2002/91/EC	

These particulars, whilst believed to be accurate are set out as a general outline only for guidance and do not constitute any part of an offer or contract. Intending purchasers should not rely on them as statements of representation of fact, but must satisfy themselves by inspection or otherwise as to their accuracy. No person in this firms employment has the authority to make or give any representation or warranty in respect of the property.