



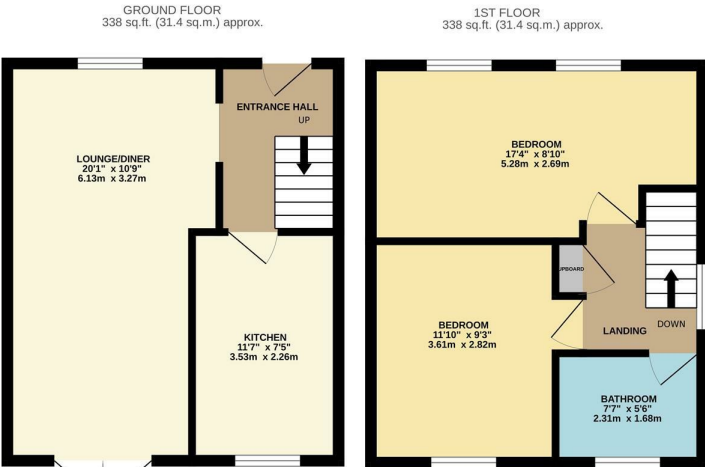
Fullers Mead,, Harlow, CM17 9AP  
£300,000





# Fullers Mead,, Harlow, CM17 9AP

Offered with NO CHAIN is this well presented two double bedroom family home located in the popular turning of Fullers Mead, Harlow. As you enter there is a hallway leading to a large lounge/diner and a modern kitchen with a range of fitted wall and base units, whilst upstairs there are two double bedrooms and a family bathroom with a white three piece suite. Outside, the rear garden is mainly laid to lawn with a patio area, shed and side access leading out to the front garden. Fullers Mead is located just off Potter Street, within walking distance of excellent local schools, shops, Harlow Common and the M11 close by.



FMIREYLANDJOHNSON  
TOTAL FLOOR AREA - 676 sq.ft. (62.8 sq.m.) approx.  
Whilst every attempt has been made to ensure the accuracy of the floorplan contained here, measurements of doors, windows, rooms and any other items are approximate and no responsibility is taken for any error, omission or mis-statement. This plan is for illustrative purposes only and should be used as such by any prospective purchaser. The services, systems and appliances shown have not been tested and no guarantee as to their operability or efficiency can be given.  
Made with Metropix 1/2025



Energy Efficiency Rating			Environmental Impact (CO <sub>2</sub> ) Rating		
	Current	Potential		Current	Potential
Very energy efficient - lower running costs			Very environmentally friendly - lower CO <sub>2</sub> emissions		
(92 plus) <b>A</b>			(92 plus) <b>A</b>		
(81-91) <b>B</b>			(81-91) <b>B</b>		
(69-80) <b>C</b>			(69-80) <b>C</b>		
(55-68) <b>D</b>			(55-68) <b>D</b>		
(39-54) <b>E</b>			(39-54) <b>E</b>		
(21-38) <b>F</b>			(21-38) <b>F</b>		
(1-20) <b>G</b>			(1-20) <b>G</b>		
Not energy efficient - higher running costs			Not environmentally friendly - higher CO <sub>2</sub> emissions		
	64	84			
England & Wales			England & Wales		
EU Directive 2002/91/EC			EU Directive 2002/91/EC		

These particulars, whilst believed to be accurate are set out as a general outline only for guidance and do not constitute any part of an offer or contract. Intending purchasers should not rely on them as statements of representation of fact, but must satisfy themselves by inspection or otherwise as to their accuracy. No person in this firms employment has the authority to make or give any representation or warranty in respect of the property.