



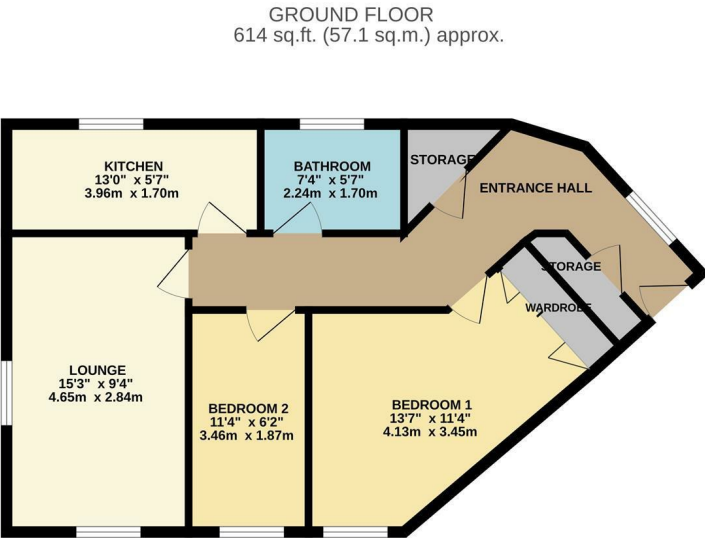
Turnors, Harlow, CM20 1EF  
£220,000





# Turnors, Harlow, CM20 1EF

Offered with NO CHAIN is this two bedroom first floor apartment, which is ideally located within walking distance of Princess Alexandra Hospital, Harlow Town Centre and Harlow Town Train Station, whilst also including two allocated parking spaces. The property comprises an entrance hallway leading to a large lounge/diner, a fitted kitchen with a range of wall and base units, two bedrooms and a bathroom with a white three piece suite. Other benefits include a telephone entry system and multiple storage cupboards. Turnors is found just off Haydens Avenue, with Harlow Town Park and schools within walking distance. The property is currently tenanted, achieving a monthly rental income of £1400 per month. Lease Remaining: 962 years. Service Charge: £236 per month. Ground Rent: Peppercorn (effectively zero).



TOTAL FLOOR AREA: 614 sq.ft. (57.1 sq.m.) approx.  
Whilst every attempt has been made to ensure the accuracy of the floorplan contained here, measurements of doors, windows, rooms and any other items are approximate and no responsibility is taken for any error, omission or mis-statement. This plan is for illustrative purposes only and should be used as such by any prospective purchaser. The services, systems and appliances shown have not been tested and no guarantee (as to their operation or efficiency) can be given.  
Made with Metropix C2023



Energy Efficiency Rating		
	Current	Potential
Very energy efficient - lower running costs		
(92 plus) A		
(81-91) B		
(69-80) C		
(55-68) D		
(39-54) E		
(21-38) F		
(1-20) G		
Not energy efficient - higher running costs		
England & Wales	EU Directive 2002/91/EC	

Environmental Impact (CO <sub>2</sub> ) Rating		
	Current	Potential
Very environmentally friendly - lower CO <sub>2</sub> emissions		
(92 plus) A		
(81-91) B		
(69-80) C		
(55-68) D		
(39-54) E		
(21-38) F		
(1-20) G		
Not environmentally friendly - higher CO <sub>2</sub> emissions		
England & Wales	EU Directive 2002/91/EC	

These particulars, whilst believed to be accurate are set out as a general outline only for guidance and do not constitute any part of an offer or contract. Intending purchasers should not rely on them as statements of representation of fact, but must satisfy themselves by inspection or otherwise as to their accuracy. No person in this firms employment has the authority to make or give any representation or warranty in respect of the property.