



Victoria Close, Cheshunt, EN8 9EP
£1,100 Per Month

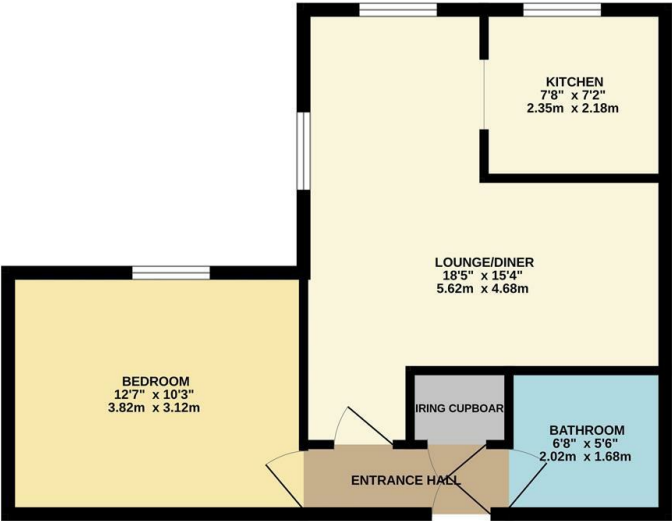


Victoria Close, Cheshunt, EN8 9EP

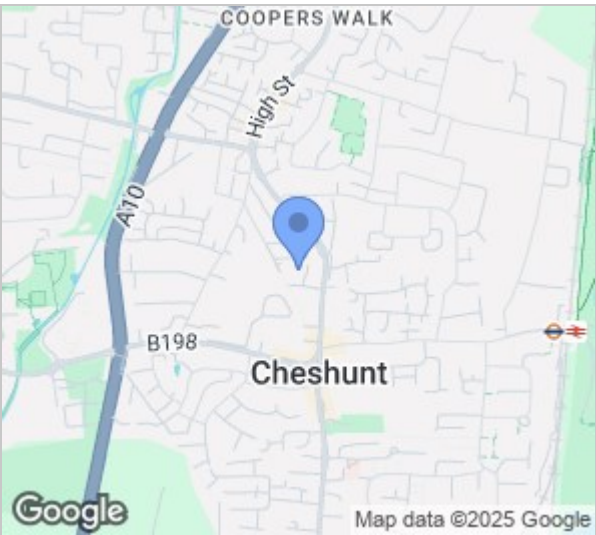
A recently decorated, ground floor apartment available NOW on an unfurnished basis. Alexander Court is a private development of apartments located just off Turners Hill, close to the train station and easy access to the A10. The property has an entrance hall, 'L' shape lounge/diner, modern fitted kitchen with white goods, bathroom and double bedroom. There is also private parking and a secure door entry system.



GROUND FLOOR
457 sq.ft. (42.5 sq.m.) approx.



TOTAL FLOOR AREA : 457 sq.ft. (42.5 sq.m.) approx.
Whilst every attempt has been made to ensure the accuracy of the floorplan contained herein, measurements of doors, windows, rooms and any other items are approximate and no responsibility is taken for any error, omission or mis-statement. This plan is for illustrative purposes only and should be used as such by any prospective purchaser. The services, systems and appliances shown have not been tested and no guarantee, as to their operation or efficiency can be given.
Made with Metropix 05/25



Energy Efficiency Rating		
	Current	Potential
Very energy efficient - lower running costs		
(92 plus) A		
(81-91) B		
(69-80) C		
(55-68) D		
(39-54) E		
(21-38) F		
(1-20) G		
Not energy efficient - higher running costs		
England & Wales		EU Directive 2002/91/EC

Environmental Impact (CO ₂) Rating		
	Current	Potential
Very environmentally friendly - lower CO ₂ emissions		
(92 plus) A		
(81-91) B		
(69-80) C		
(55-68) D		
(39-54) E		
(21-38) F		
(1-20) G		
Not environmentally friendly - higher CO ₂ emissions		
England & Wales		EU Directive 2002/91/EC

These particulars, whilst believed to be accurate are set out as a general outline only for guidance and do not constitute any part of an offer or contract. Intending purchasers should not rely on them as statements of representation of fact, but must satisfy themselves by inspection or otherwise as to their accuracy. No person in this firms employment has the authority to make or give any representation or warranty in respect of the property.