



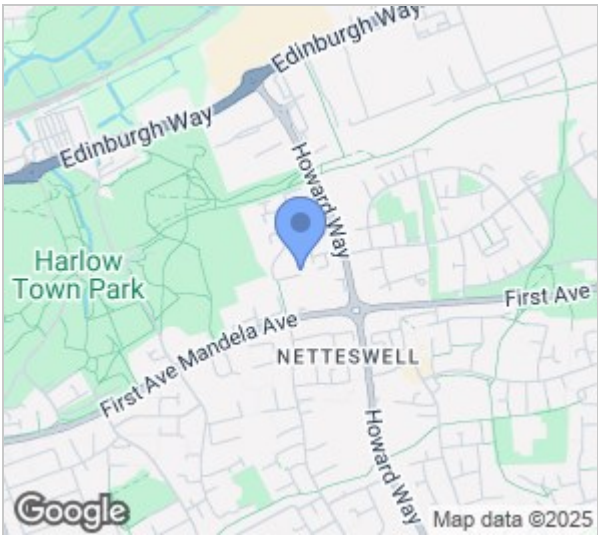
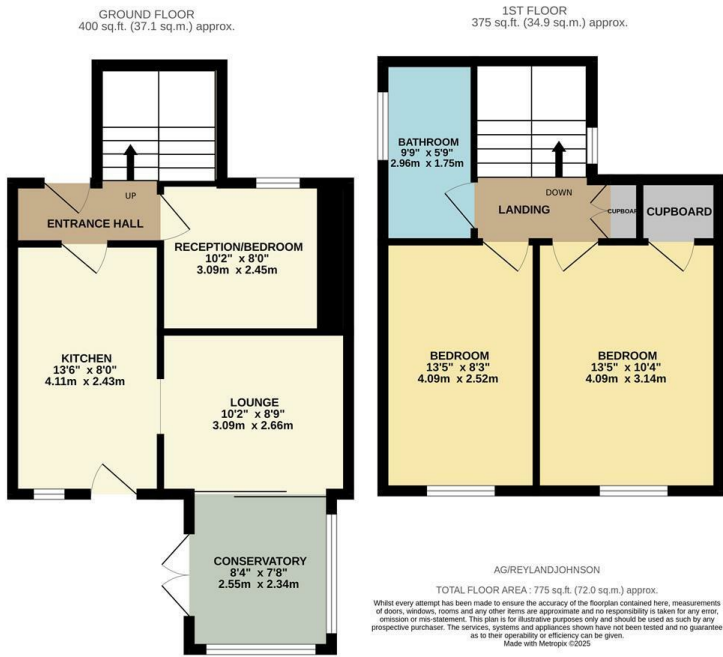
Altham Grove, CM20 2PL, Harlow, CM20 2PL
Guide Price £300,000



Altham Grove, CM20 2PL, Harlow, CM20 2PL

Guide Price £300,000 to £315,000

Located in the highly popular CM20 area of Altham Grove is this two double bedroom terraced family home, Within walking distance of excellent local schools and Harlow Town Train Station. Inside, there is an entrance hallway leading to a kitchen with a range of fitted wall and base units, a lounge, which has been split into two (one part currently used as a bedroom) and a conservatory, whilst upstairs there are two double bedrooms and a family bathroom with a white three piece suite. Outside, the south facing rear garden is a mix of patio and decking, with a shed and rear access, whilst to the front is a small green. Altham Grove is located just off Howard Way, with Harlow Town Park, shops and schools just a stones throw away.



Energy Efficiency Rating		
	Current	Potential
Very energy efficient - lower running costs		
(92 plus) A		
(81-91) B		
(69-80) C		
(55-68) D		
(39-54) E		
(21-38) F		
(1-20) G		
Not energy efficient - higher running costs		
England & Wales	EU Directive 2002/91/EC	

Environmental Impact (CO ₂) Rating		
	Current	Potential
Very environmentally friendly - lower CO ₂ emissions		
(92 plus) A		
(81-91) B		
(69-80) C		
(55-68) D		
(39-54) E		
(21-38) F		
(1-20) G		
Not environmentally friendly - higher CO ₂ emissions		
England & Wales	EU Directive 2002/91/EC	

These particulars, whilst believed to be accurate are set out as a general outline only for guidance and do not constitute any part of an offer or contract. Intending purchasers should not rely on them as statements of representation of fact, but must satisfy themselves by inspection or otherwise as to their accuracy. No person in this firms employment has the authority to make or give any representation or warranty in respect of the property.

T. 01279 216216 E. info@rjestateagents.co.uk

1 Acorn Mews, Harlow, Essex, CM18 6NA www.rjestateagents.co.uk