

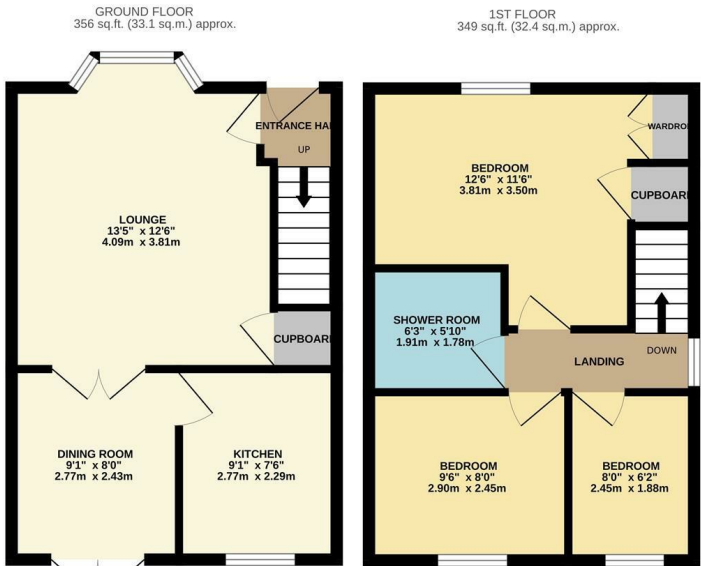
Chamberlain Close, Church Langley, CM17 9QP  
£375,000



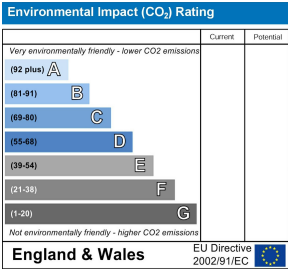
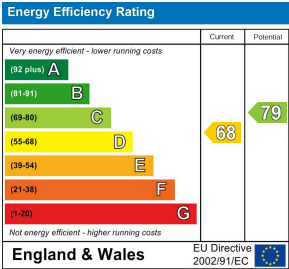
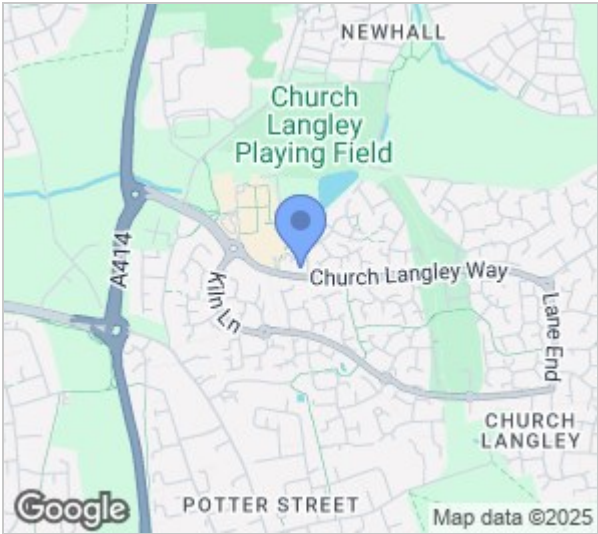


# Chamberlain Close, Church Langley, CM17 9QP

Located in the highly popular Church Langley Development is this well presented, three bedroom end terrace family home with a garage and parking. As you enter there is a hallway leading to a lounge, dining room and modern kitchen with a range of fitted wall and base units, whilst upstairs there are three bedrooms, with fitted wardrobes to the master, plus a modern shower room. Outside, the rear garden includes a corner plot, with a mix of patio, artificial lawn and raised beds, with a shed and rear access out to the single garage with parking in front of it. Chamberlain Close is found just off Church Langley Way, just a short walk from excellent schools, shops and open fields.



CC/REYLANDJOHNSON  
TOTAL FLOOR AREA: 705 sq.ft. (65.5 sq.m.) approx.  
Whilst every attempt has been made to ensure the accuracy of the floorplan contained here, measurements of doors, windows, rooms and any other items are approximate and no responsibility is taken for any error, omission or mis-statement. This plan is for illustrative purposes only and should be used as such by any prospective purchaser. The services, systems and appliances shown have not been tested and no guarantee as to their operability or efficiency can be given.  
Made with Metropix ©2025



These particulars, whilst believed to be accurate are set out as a general outline only for guidance and do not constitute any part of an offer or contract. Intending purchasers should not rely on them as statements of representation of fact, but must satisfy themselves by inspection or otherwise as to their accuracy. No person in this firms employment has the authority to make or give any representation or warranty in respect of the property.