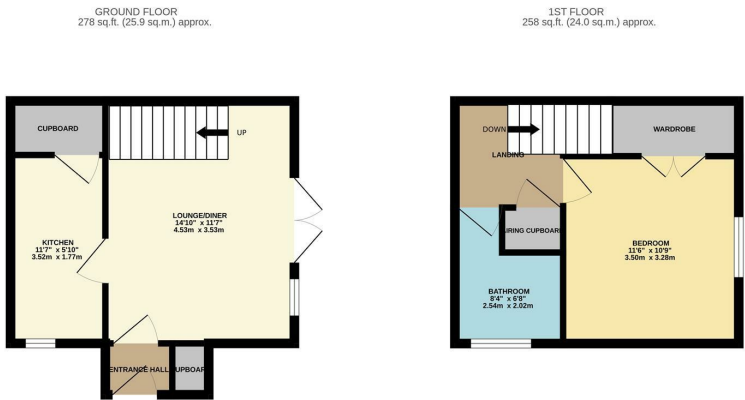


Copshall Close, Harlow, CM18 7LJ
£245,000

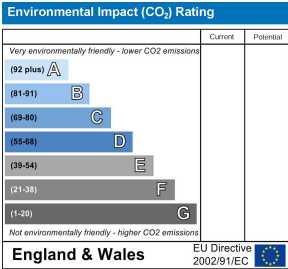
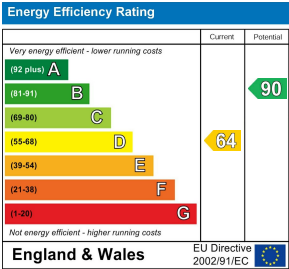


Copshall Close, Harlow, CM18 7LJ

A rarely available one bedroom house with an allocated parking space and private garden. Located in a quiet cul de sac, the house offers an entrance hallway, kitchen with under stairs storage and a spacious lounge with double doors opening up onto the private rear garden. Upstairs comprises a large bedroom with wardrobe space, bathroom and another additional storage cupboard. Copshall Close is located off of Commonsides Road, within walking distance of local shops and parks as well as being around a 10 minute drive to junction 7 of the M11 with direct links to London. Please note there is a service charge of approximately £25 per month on this property.



REYLAND/JOHNSONICC
TOTAL FLOOR AREA: 537 sq.ft. (49.9 sq.m.) approx.
Whilst every attempt has been made to ensure the accuracy of the floorplan contained here, measurements of all rooms, windows, rooms and any other items are approximate and no responsibility is taken for any error, omission or mis-statement. This plan is for illustrative purposes only and should be used as such by any prospective purchaser. The services, systems and appliances shown have not been tested and no guarantee as to their operability or efficiency can be given.
Made with Metreapp C2025.



These particulars, whilst believed to be accurate are set out as a general outline only for guidance and do not constitute any part of an offer or contract. Intending purchasers should not rely on them as statements of representation of fact, but must satisfy themselves by inspection or otherwise as to their accuracy. No person in this firms employment has the authority to make or give any representation or warranty in respect of the property.