

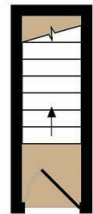


Tithelands, Harlow, CM19 5NE  
£1,000 Per Month

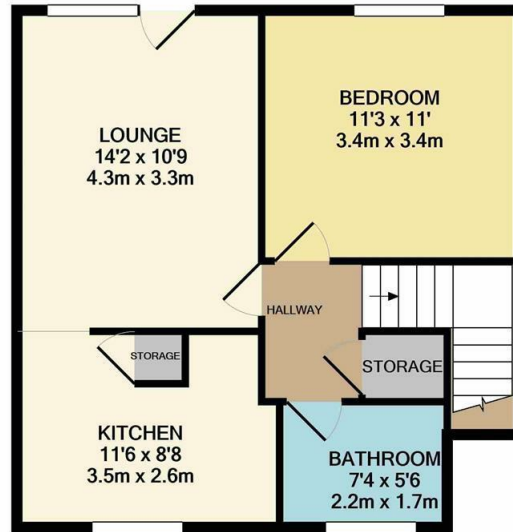
1 bed 1 bath 1 sofa C

# Tithelands, Harlow, CM19 5NE

A one bedroom first floor maisonette available on a unfurnished basis,. The property has direct street access with stairs leading up to the accommodation which comprises of a good size lounge, kitchen with a range of wall and base units, bathroom with white suite and a double bedroom. Tithelands is situated on the south/westerly side of town and is available Early August.



ENTRANCE FLOOR  
APPROX. FLOOR  
AREA 27 SQ.FT.  
(2.5 SQ.M.)



1ST FLOOR  
APPROX. FLOOR  
AREA 486 SQ.FT.  
(45.2 SQ.M.)

REYLANDJOHNSON/T  
TOTAL APPROX. FLOOR AREA 513 SQ.FT. (47.7 SQ.M.)

Whilst every attempt has been made to ensure the accuracy of the floor plan contained here, measurements of doors, windows, rooms and any other items are approximate and no responsibility is taken for any error, omission, or mis-statement. This plan is for illustrative purposes only and should be used as such by any prospective purchaser. The services, systems and appliances shown have not been tested and no guarantee as to their operability or efficiency can be given  
Made with Metropix ©2021



Energy Efficiency Rating		
	Current	Potential
Very energy efficient - lower running costs		
(92 plus) <b>A</b>		
(81-91) <b>B</b>		
(69-80) <b>C</b>		
(55-68) <b>D</b>		
(39-54) <b>E</b>		
(21-38) <b>F</b>		
(1-20) <b>G</b>		
Not energy efficient - higher running costs		
<b>England &amp; Wales</b>	EU Directive 2002/91/EC	EU Directive 2002/91/EC

Environmental Impact (CO <sub>2</sub> ) Rating		
	Current	Potential
Very environmentally friendly - lower CO <sub>2</sub> emissions		
(92 plus) <b>A</b>		
(81-91) <b>B</b>		
(69-80) <b>C</b>		
(55-68) <b>D</b>		
(39-54) <b>E</b>		
(21-38) <b>F</b>		
(1-20) <b>G</b>		
Not environmentally friendly - higher CO <sub>2</sub> emissions		
<b>England &amp; Wales</b>	EU Directive 2002/91/EC	EU Directive 2002/91/EC

These particulars, whilst believed to be accurate are set out as a general outline only for guidance and do not constitute any part of an offer or contract. Intending purchasers should not rely on them as statements of representation of fact, but must satisfy themselves by inspection or otherwise as to their accuracy. No person in this firms employment has the authority to make or give any representation or warranty in respect of the property.

T. 01279 216216 E. info@rjestateagents.co.uk

1 Acorn Mews, Harlow, Essex, CM18 6NA www.rjestateagents.co.uk