



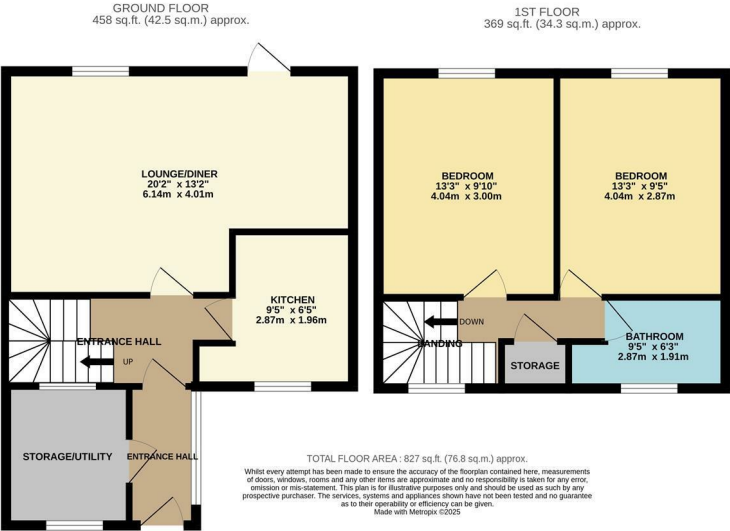
Arkwrights, Harlow, CM20 3LT  
Guide Price £300,000





# Arkwrights, Harlow, CM20 3LT

Tucked away down a little cul-de-sac is this well presented two bedroom terraced home with private unoverlooked rear garden. the property which has been updated by the current owners over the years offers a modern fitted kitchen with a range of wall and base units including some integral appliances, large lounge/diner and utility space. Upstairs offers two double bedrooms and well presented family shower room. Outside offers a good size garden mostly laid to lawn with a paved patio area. Arkwrights is situated between the Stow and Harlow Town Centre, close by are shops and schooling and Harlow's mainline train station is just over a mile away.



Energy Efficiency Rating		
	Current	Potential
Very energy efficient - lower running costs		
(92 plus) A		
(81-91) B		
(69-80) C		
(55-68) D		
(39-54) E		
(21-38) F		
(1-20) G		
Not energy efficient - higher running costs		
England & Wales		
EU Directive 2002/91/EC		

Environmental Impact (CO <sub>2</sub> ) Rating		
	Current	Potential
Very environmentally friendly - lower CO <sub>2</sub> emissions		
(92 plus) A		
(81-91) B		
(69-80) C		
(55-68) D		
(39-54) E		
(21-38) F		
(1-20) G		
Not environmentally friendly - higher CO <sub>2</sub> emissions		
England & Wales		
EU Directive 2002/91/EC		

These particulars, whilst believed to be accurate are set out as a general outline only for guidance and do not constitute any part of an offer or contract. Intending purchasers should not rely on them as statements of representation of fact, but must satisfy themselves by inspection or otherwise as to their accuracy. No person in this firms employment has the authority to make or give any representation or warranty in respect of the property.