

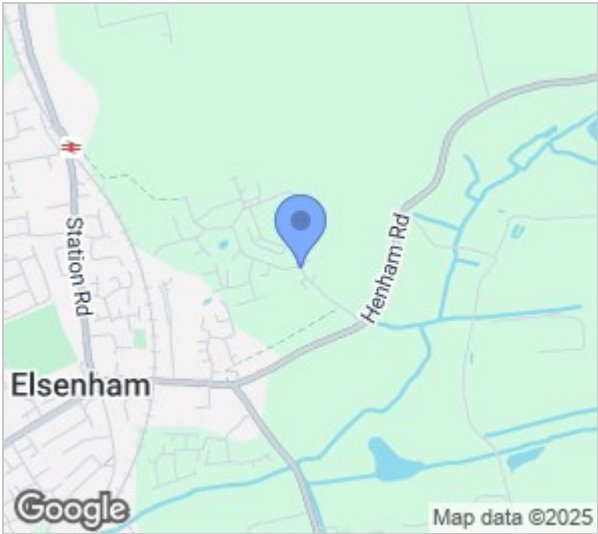
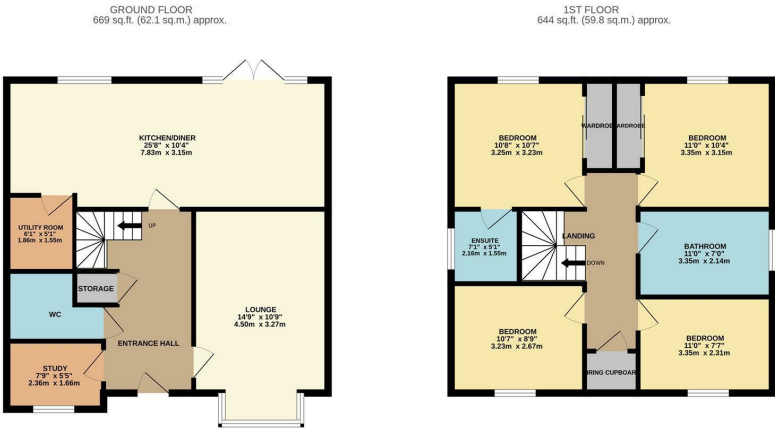


Crocus Drive, Elsenham, CM22 6ZB
Guide Price £575,000



Crocus Drive, Elsenham, CM22 6ZB

GUIDE PRICE: £575,000 - £600,000.
OFFERED WITH NO ONWARD CHAIN and located on the popular Elsenham Park development is this well presented four bedroom detached family home with converted garage and driveway. The ground floor comprises an entrance hall with cloakroom/WC leading to a lounge, office/study, kitchen/diner with a modern range of fitted wall & base level units with some integrated appliances and a separate utility room. The first floor offers a master bedroom with fitted wardrobes and en-suite shower room, three further bedrooms and a family bathroom with a white three piece-suite with separate shower cubicle. Outside the rear garden offers patio and lawn areas. Other benefits include solar panels, EV charging point and side access. Crocus Drive is located in Elsenham just a short drive to junction 8 of the M11 motorway, Stansted airport and Bishops Stortford. Please note this property is subject to an annual management charge of £149.05.



Energy Efficiency Rating			Environmental Impact (CO ₂) Rating		
	Current	Potential		Current	Potential
Very energy efficient - lower running costs			Very environmentally friendly - lower CO ₂ emissions		
(92 plus) A			(92 plus) A		
(81-91) B			(81-91) B		
(69-80) C			(69-80) C		
(55-68) D			(55-68) D		
(39-54) E			(39-54) E		
(21-38) F			(21-38) F		
(1-20) G			(1-20) G		
Not energy efficient - higher running costs			Not environmentally friendly - higher CO ₂ emissions		
England & Wales			England & Wales		
EU Directive 2002/91/EC			EU Directive 2002/91/EC		

These particulars, whilst believed to be accurate are set out as a general outline only for guidance and do not constitute any part of an offer or contract. Intending purchasers should not rely on them as statements of representation of fact, but must satisfy themselves by inspection or otherwise as to their accuracy. No person in this firms employment has the authority to make or give any representation or warranty in respect of the property.