



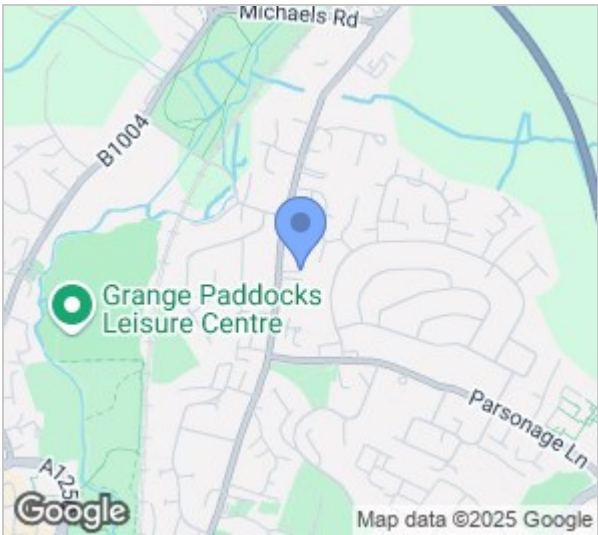
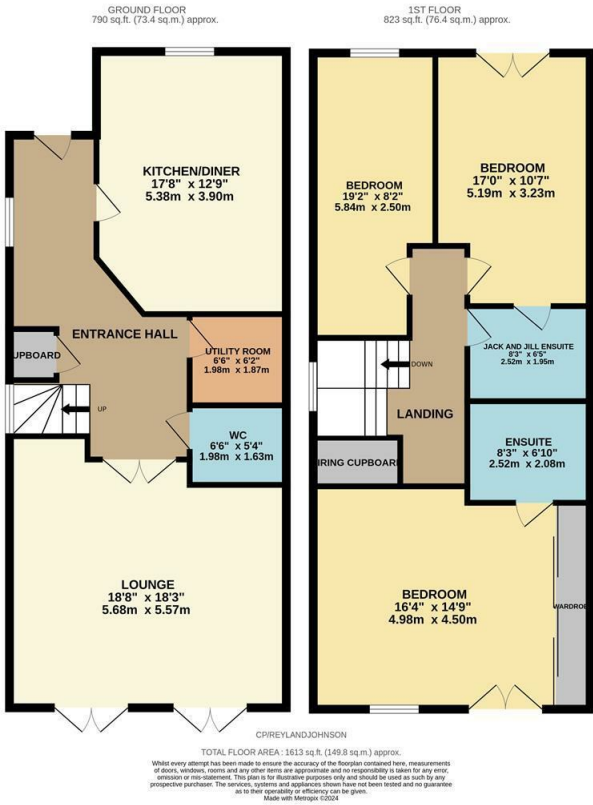
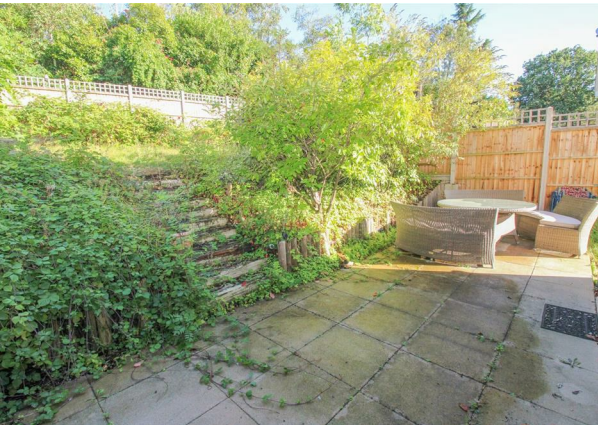
Chartwell Place, Bishop's Stortford, CM23 2GF
Guide Price £650,000



Chartwell Place, Bishop's Stortford, CM23 2GF

**** (Guide Price £650,000-£675,000) **** Offered with no onward chain is this modern three double bedroom semi detached family home, located in a gated development close to Bishops Stortford Town Centre. On the ground floor there is an entrance hallway leading to a modern kitchen/diner with a range of fitted wall and base units, a large lounge, a utility room and a cloakroom/WC. Upstairs there are three large double bedrooms, with an en-suite and fitted wardrobes to the master and a Jack and Jill en-suite/ family bathroom with a white three piece suite. The tiered rear garden is laid to lawn and patio, with side access leading to the parking for two vehicles. Chartwell Place is located just a short walk from Bishops Stortford Town Centre, the train station, town park and excellent schools.

Please note that there is an annual estate charge for this property, approx. £1,020 per annum



Energy Efficiency Rating			Environmental Impact (CO ₂) Rating		
	Current	Potential		Current	Potential
Very energy efficient - lower running costs			Very environmentally friendly - lower CO ₂ emissions		
(92 plus) A			(92 plus) A		
(81-91) B			(81-91) B		
(69-80) C			(69-80) C		
(55-68) D			(55-68) D		
(39-54) E			(39-54) E		
(21-38) F			(21-38) F		
(1-20) G			(1-20) G		
Not energy efficient - higher running costs			Not environmentally friendly - higher CO ₂ emissions		
England & Wales	EU Directive 2002/91/EC		England & Wales	EU Directive 2002/91/EC	

These particulars, whilst believed to be accurate are set out as a general outline only for guidance and do not constitute any part of an offer or contract. Intending purchasers should not rely on them as statements of representation of fact, but must satisfy themselves by inspection or otherwise as to their accuracy. No person in this firms employment has the authority to make or give any representation or warranty in respect of the property.

T. 01279 598598 E. sawbridgeworth@rjestateagents.co.uk

4 Hoestock Road, Sawbridgeworth, Hertfordshire, CM21 0DY www.rjestateagents.co.uk