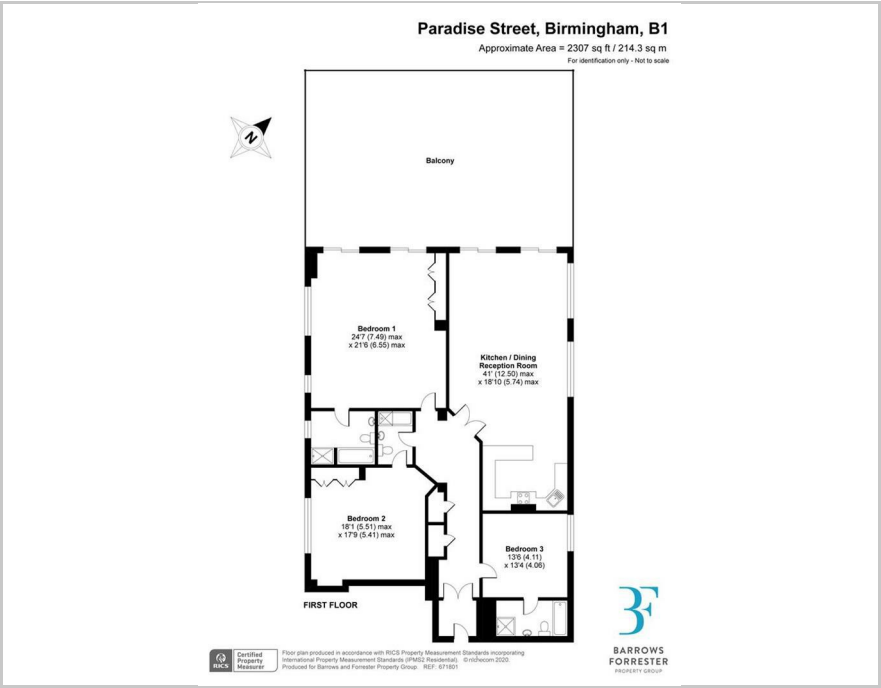




3 3 1 C



Floor Plan



Area Map



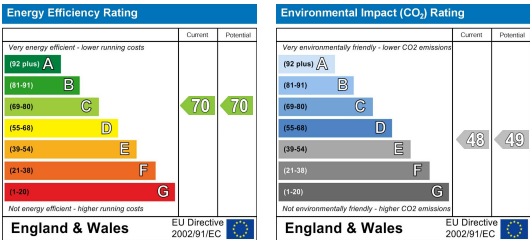
Accommodation

- VERY Large Three Bedroom Penthouse
- Three Bathrooms
- Private Terrace Overlooking The Library and Chamberlain Square
- Two Parking Spaces
- Concierge
- Furnished To A Very High Standard
- Private Lift Access
- Centrally Located
- Council Tax Band G: £2,767.18 p/a (Approx.)
- Professionally Managed by Barrows & Forrester

Viewing

Please contact our Barrows & Forrester Birmingham Office on 0121 296 2600 if you wish to arrange a viewing appointment for this property or require further information.

Energy Efficiency Graph



These particulars, whilst believed to be accurate are set out as a general outline only for guidance and do not constitute any part of an offer or contract. Intending purchasers should not rely on them as statements of representation of fact, but must satisfy themselves by inspection or otherwise as to their accuracy. No person in this firm's employment has the authority to make or give any representation or warranty in respect of the property.

[www.barrowsandforrester.co.uk](http://www.barrowsandforrester.co.uk) | [info@barrowsandforrester.co.uk](mailto:info@barrowsandforrester.co.uk)

**Birmingham Office** | 19 Kenyon Forge, Kenyon Street, Birmingham, B18 6DH | T. 0121 296 2600

**Lichfield Office** | 27 Lincoln Croft, Shenstone, Lichfield, WS14 0ND | T. 01543 226 322