

# nest

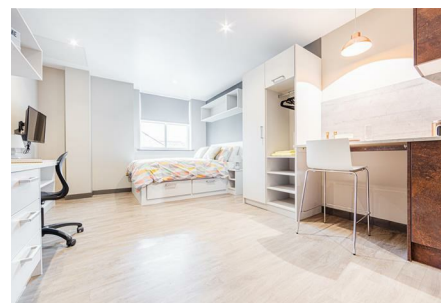


**S52 G1 North Street East,  
, NE1 8DE  
£165 Per week**



Modern studio accommodation in the heart of Newcastle City Centre. Ideally located adjacent to Northumbria University. Available to student and professionals.

- Double Bed with Storage Space
- Free High-Speed Virgin Broadband
- Stylish En-Suite Bathroom
- Located in the heart of Newcastle city centre
- Modern kitchen area
- Wall Mounted TV
- Available to STUDENTS and PROFESSIONALS
- Free double occupancy



Lower Ground Floor, 27 Ridley Place, Newcastle upon Tyne, Tyne and Wear, NE1 8JN  
Tel: 0191 6403450 | Email: [info@propertybynest.co.uk](mailto:info@propertybynest.co.uk)  
[www.propertybynest.co.uk](http://www.propertybynest.co.uk)