



## Offers In The Region Of £650,000

**\*DETACHED PROPERTY PLUS BUILDING PLOT\* \*5X POTENTIAL HOMES\* \*FANTASTIC LOCATION\* \*STONES THROW FROM YEADON VILLAGE & AIRPORT\* \*RARE TO MARKET OPPORTUNITY\***

**OFFERED VACANT WITH DEVELOPMENT OPPORTUNITY - 4 X THREE BEDROOM DWELLINGS**

Planning Permission was granted by Leeds City Council on 21.12.2023, for Outline planning application for four dwelling houses with all matters reserved.

Ref: 23/05782/OT

A vacant three bedroom detached house with planning permission for an additional four, 2 storey, 3 bedroom houses. Comprising of 2x semi detached houses and 2x detached houses. Don't miss this rare to market opportunity! Approx. quarter acre plot.

The existing property is approx 950sqft.

Ask us about....

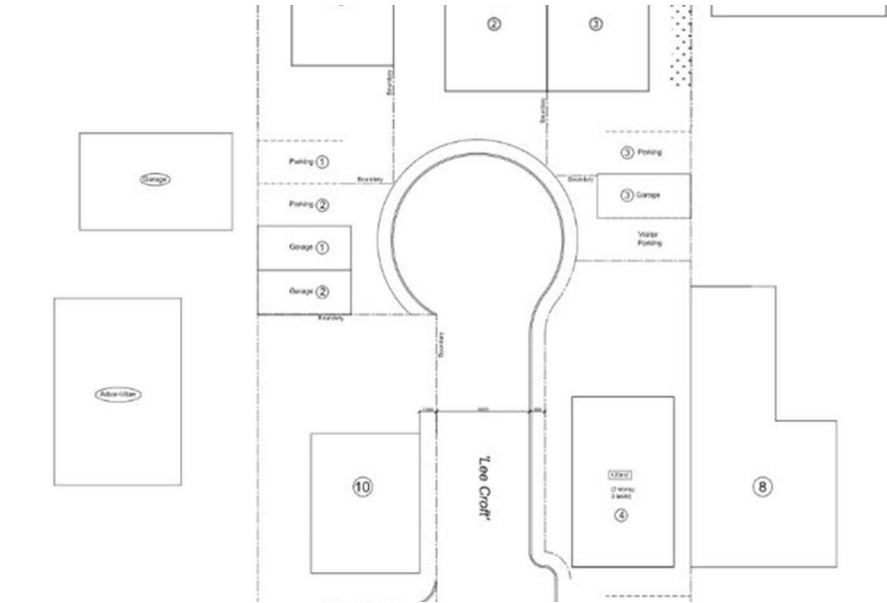
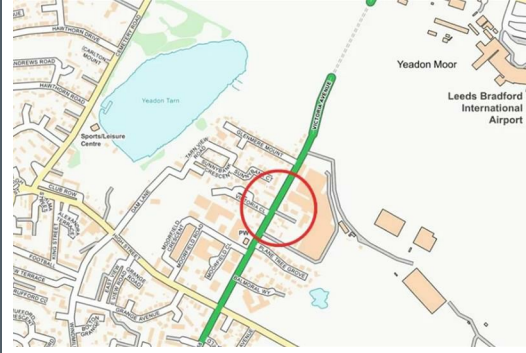
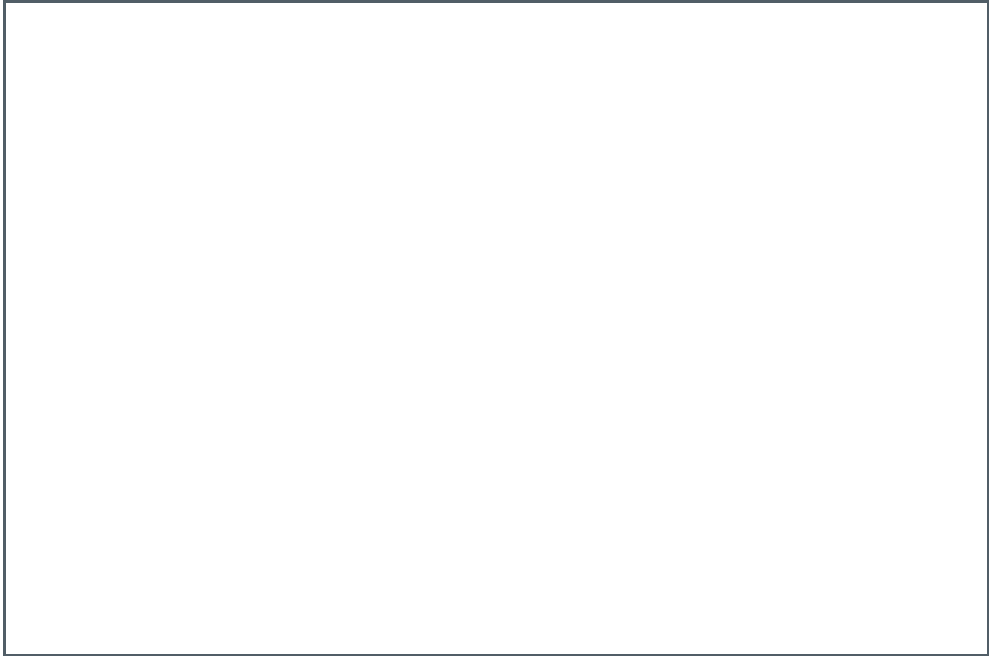
AUCTION

CONVEYANCING

MORTGAGES

SURVEYS





These particulars do not form part of any contract and no statements are made without any responsibility on the part of their clients. Applicants must investigate for themselves that statements are correct and no agent whether the partner or employee has the authority to make any representation or warranty whatsoever in respect of this property.

**IMPORTANT NOTICE: WHILST WE ENDEAVOUR TO MAKE OUR SALES DETAILS ACCURATE AND RELIABLE, THEY SHOULD NOT BE RELIED ON AS STATEMENTS OR REPRESENTATIONS OF FACT AND DO NOT IN ANY WAY CONSTITUTE A CONTRACT.**

**PROSPECTIVE PURCHASERS SHOULD SATISFY THEMSELVES THAT DIMENSIONS ARE CORRECT AND THAT MAINS SERVICES ARE OPERATIONAL.**

Energy Efficiency Rating	
Current	Potential
Very energy efficient - lower running costs	
(92 plus) <b>A</b>	
(81-91) <b>B</b>	
(69-80) <b>C</b>	
(55-68) <b>D</b>	
(39-54) <b>E</b>	
(21-38) <b>F</b>	
(1-20) <b>G</b>	
Not energy efficient - higher running costs	
England & Wales	
EU Directive 2002/91/EC	

Environmental Impact (CO <sub>2</sub> ) Rating	
Current	Potential
Very environmentally friendly - lower CO <sub>2</sub> emissions	
(92 plus) <b>A</b>	
(81-91) <b>B</b>	
(69-80) <b>C</b>	
(55-68) <b>D</b>	
(39-54) <b>E</b>	
(21-38) <b>F</b>	
(1-20) <b>G</b>	
Not environmentally friendly - higher CO <sub>2</sub> emissions	
England & Wales	
EU Directive 2002/91/EC	