



£695 Per Month

Nestled in the charming area of Luddenden Place, Queensbury, Bradford, this delightful terraced house presents an excellent opportunity for those seeking a comfortable and inviting home.

The accommodation comprises: Lounge, Kitchen, One bedroom, bathroom and box room (no window).

The bathroom is conveniently located, providing essential amenities for daily living. The property's location in Queensbury offers a blend of tranquillity and accessibility, with local shops and parks within easy reach.

Long term let available. EPC C. Council tax band A.

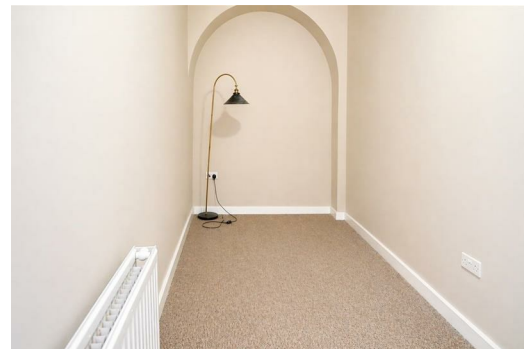
Ask us about...

AUCTION

CONVEYANCING

MORTGAGES

SURVEYS



These particulars do not form part of any contract and no statements are made without any responsibility on the part of their clients. Applicants must investigate for themselves that statements are correct and no agent whether the partner or employee has the authority to make any representation or warranty whatsoever in respect of this property.
IMPORTANT NOTICE: WHILST WE ENDEAVOUR TO MAKE OUR SALES DETAILS ACCURATE AND RELIABLE, THEY SHOULD NOT BE RELIED ON AS STATEMENTS OR REPRESENTATIONS OF FACT AND DO NOT IN ANY WAY CONSTITUTE A CONTRACT.
 PROSPECTIVE PURCHASERS SHOULD SATISFY THEMSELVES THAT DIMENSIONS ARE CORRECT AND THAT MAINS SERVICES ARE OPERATIONAL.

Energy Efficiency Rating		Environmental Impact (CO ₂) Rating	
Current	Potential	Current	Potential
	89		
<small>Very energy efficient - lower running costs</small> <small>(92 plus) A</small> <small>(81-91) B</small> <small>(69-80) C</small> <small>(55-68) D</small> <small>(39-54) E</small> <small>(21-38) F</small> <small>(1-20) G</small> <small>Not energy efficient - higher running costs</small>	<small>EU Directive 2002/91/EC</small>	<small>Very environmentally friendly - lower CO₂ emissions</small> <small>(92 plus) A</small> <small>(81-91) B</small> <small>(69-80) C</small> <small>(55-68) D</small> <small>(39-54) E</small> <small>(21-38) F</small> <small>(1-20) G</small> <small>Not environmentally friendly - higher CO₂ emissions</small>	<small>EU Directive 2002/91/EC</small>