



£625 PCM

FOR RENT is this TWO BEDROOM modern purpose built apartment second floor.
Comprising: Entrance hall, lounge-kitchenette, two bedrooms and house bathroom. Allocated parking.
Intercom entry system. Benefiting from panel heaters and zonal heating.
Situating close to local amenities and well placed for access to the motorway network (M606).

Available immediately.

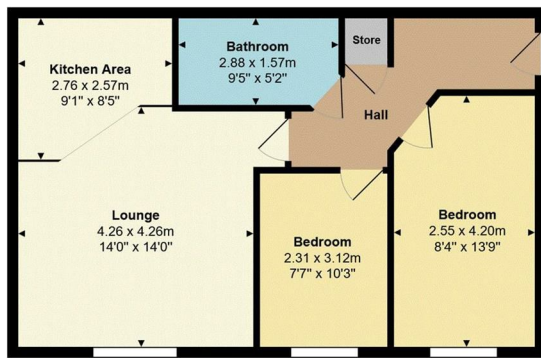
Ask us about....

AUCTION

CONVEYANCING

MORTGAGES

SURVEYS



Approx. Total Area: 53.9 m² ... 580 ft²

Whilst every effort is taken to ensure accuracy of the floor plans, measurements are approximate and for illustration purposes only.



These particulars do not form part of any contract and no statements are made without any responsibility on the part of their clients. Applicants must investigate for themselves that statements are correct and no agent whether the partner or employee has the authority to make any representation or warranty whatsoever in respect of this property.

IMPORTANT NOTICE: WHILST WE ENDEAVOUR TO MAKE OUR SALES DETAILS ACCURATE AND RELIABLE, THEY SHOULD NOT BE RELIED ON AS STATEMENTS OR REPRESENTATIONS OF FACT AND DO NOT IN ANY WAY CONSTITUTE A CONTRACT.

PROSPECTIVE PURCHASERS SHOULD SATISFY THEMSELVES THAT DIMENSIONS ARE CORRECT AND THAT MAINS SERVICES ARE OPERATIONAL.

Energy Efficiency Rating	
Current	Potential
83	87
Very energy efficient - lower running costs (92 plus) A (81-91) B (69-80) C (55-68) D (39-54) E (21-38) F (1-20) G Not energy efficient - higher running costs	
England & Wales EU Directive 2002/91/EC	

Environmental Impact (CO ₂) Rating	
Current	Potential
79	80
Very environmentally friendly - lower CO ₂ emissions (92 plus) A (81-91) B (69-80) C (55-68) D (39-54) E (21-38) F (1-20) G Not environmentally friendly - higher CO ₂ emissions	
England & Wales EU Directive 2002/91/EC	