



£169,950

**\*TWO BEDROOMS\* \*QUIET CUL-DE-SAC\* \*IDEAL FOR FIRST TIME BUYERS\* \*POPULAR LOCATION\* \*AMPLE DRIVEWAY PARKING\* \*GARDENS\* \*WELL PRESENTED\* \*CLOSE TO LOCAL SCHOOLS & AMENITIES\***

Townend Estate Agents offer for sale this two bedroom semi-detached home. This well-maintained property offers a spacious kitchen/diner and a generously sized main bedroom. Positioned on a desirable cul-de-sac plot in the highly sought-after Wrose area, just off Westfield Lane, the location is ideal for commuting to both Shipley and Bradford and provides convenient access to local amenities and schools in Wrose, Idle, Thackley, and Five Lane Ends. Benefitting from ample driveway parking and well maintained gardens. This attractive two-bedroom home is likely to appeal to a wide range of buyers. Early viewing is strongly recommended to avoid disappointment. Contact Townend Estate Agents today to book your appointment.

Ask us about....

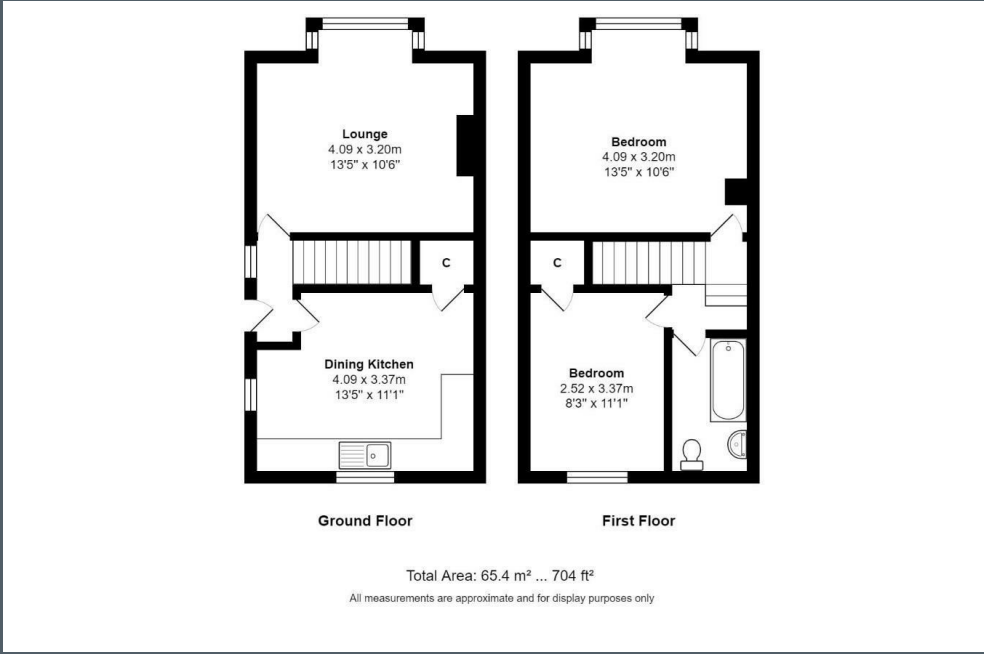
AUCTION

CONVEYANCING

MORTGAGES

SURVEYS





These particulars do not form part of any contract and no statements are made without any responsibility on the part of their clients. Applicants must investigate for themselves that statements are correct and no agent whether the partner or employee has the authority to make any representation or warranty whatsoever in respect of this property.

**IMPORTANT NOTICE: WHILST WE ENDEAVOUR TO MAKE OUR SALES DETAILS ACCURATE AND RELIABLE, THEY SHOULD NOT BE RELIED ON AS STATEMENTS OR REPRESENTATIONS OF FACT AND DO NOT IN ANY WAY CONSTITUTE A CONTRACT.**

PROSPECTIVE PURCHASERS SHOULD SATISFY THEMSELVES THAT DIMENSIONS ARE CORRECT AND THAT MAINS SERVICES ARE OPERATIONAL.

