



£125,000

***TWO BEDROOMS* *WELL PRESENTED* *IDEAL FOR FIRST TIME BUYERS & LANDLORDS* *POPULAR LOCATION*
MODERN KITCHEN & BATHROOM *EASY ACCESS TO MOTORWAY NETWORK***

Townend Estate Agents offer for sale this TWO BEDROOM END TERRACE COTTAGE. Located in a popular residential area, just a short drive towards both Halifax and Bradford city centre as well as being conveniently placed for access toward the motorway network. The property is ideal for first time buyers and landlords, with landlords looking at a return of around £850pcm. Benefitting from a modern kitchen, superb bathroom with fully tiled walls, panel bath with shower over, pedestal wash hand basin, low flush wc, heated towel rail. externally is a small buffer yard to the front, and overlooking fields to the rear.

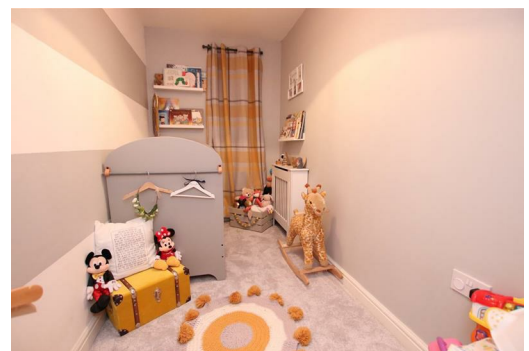
Ask us about...

AUCTION

CONVEYANCING

MORTGAGES

SURVEYS



These particulars do not form part of any contract and no statements are made without any responsibility on the part of their clients. Applicants must investigate for themselves that statements are correct and no agent whether the partner or employee has the authority to make any representation or warranty whatsoever in respect of this property.
IMPORTANT NOTICE: WHILST WE ENDEAVOUR TO MAKE OUR SALES DETAILS ACCURATE AND RELIABLE, THEY SHOULD NOT BE RELIED ON AS STATEMENTS OR REPRESENTATIONS OF FACT AND DO NOT IN ANY WAY CONSTITUTE A CONTRACT.
 PROSPECTIVE PURCHASERS SHOULD SATISFY THEMSELVES THAT DIMENSIONS ARE CORRECT AND THAT MAINS SERVICES ARE OPERATIONAL.

Energy Efficiency Rating		Environmental Impact (CO ₂) Rating	
Current	Potential	Current	Potential
England & Wales <small>EU Directive 2002/91/EC</small>		England & Wales <small>EU Directive 2002/91/EC</small>	