



£1,250 PCM

Nestled in the charming area of Roundhead Fold, Apperley Bridge, this delightful three-bedroom end townhouse presents an excellent opportunity for families and professionals alike. The property boasts a well-designed layout, providing ample space for comfortable living.

The generous living areas are perfect for both relaxation and entertaining, while the conservatory offers a lovely spot to enjoy the garden views all year round. The front and rear gardens provide a wonderful outdoor space.

In addition to the living space, the property includes a garage, providing convenient storage or parking options. The location is particularly appealing, being in close proximity to the picturesque Apperley Bridge Marina and the scenic canal, perfect for leisurely walks or cycling.

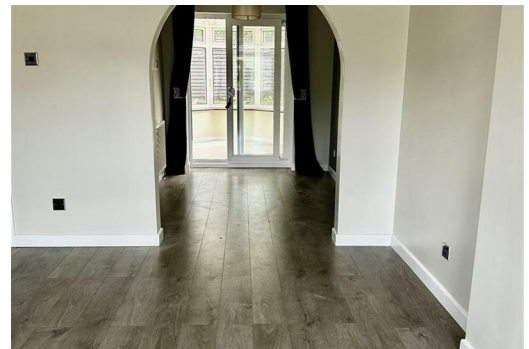
Ask us about...

AUCTION

CONVEYANCING

MORTGAGES

SURVEYS



These particulars do not form part of any contract and no statements are made without any responsibility on the part of their clients. Applicants must investigate for themselves that statements are correct and no agent whether the partner or employee has the authority to make any representation or warranty whatsoever in respect of this property.
IMPORTANT NOTICE: WHILST WE ENDEAVOUR TO MAKE OUR SALES DETAILS ACCURATE AND RELIABLE, THEY SHOULD NOT BE RELIED ON AS STATEMENTS OR REPRESENTATIONS OF FACT AND DO NOT IN ANY WAY CONSTITUTE A CONTRACT.
 PROSPECTIVE PURCHASERS SHOULD SATISFY THEMSELVES THAT DIMENSIONS ARE CORRECT AND THAT MAINS SERVICES ARE OPERATIONAL.

Energy Efficiency Rating		Current	Potential
Very energy efficient - lower running costs	(92 plus) A		
	(81-91) B		
	(69-80) C		
	(55-68) D		
	(39-54) E		
	(21-38) F		
Not energy efficient - higher running costs	(1-20) G		

EU Directive 2002/91/EC

Environmental Impact (CO ₂) Rating		Current	Potential
Very environmentally friendly - lower CO ₂ emissions	(92 plus) A		
	(81-91) B		
	(69-80) C		
	(55-68) D		
	(39-54) E		
	(21-38) F		
Not environmentally friendly - higher CO ₂ emissions	(1-20) G		

EU Directive 2002/91/EC