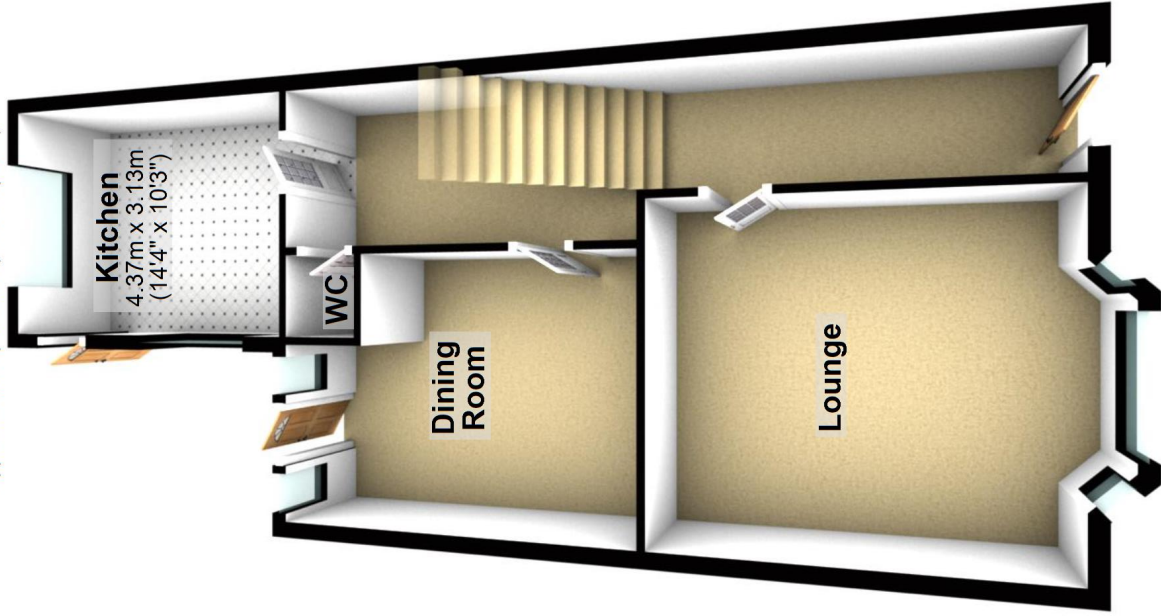


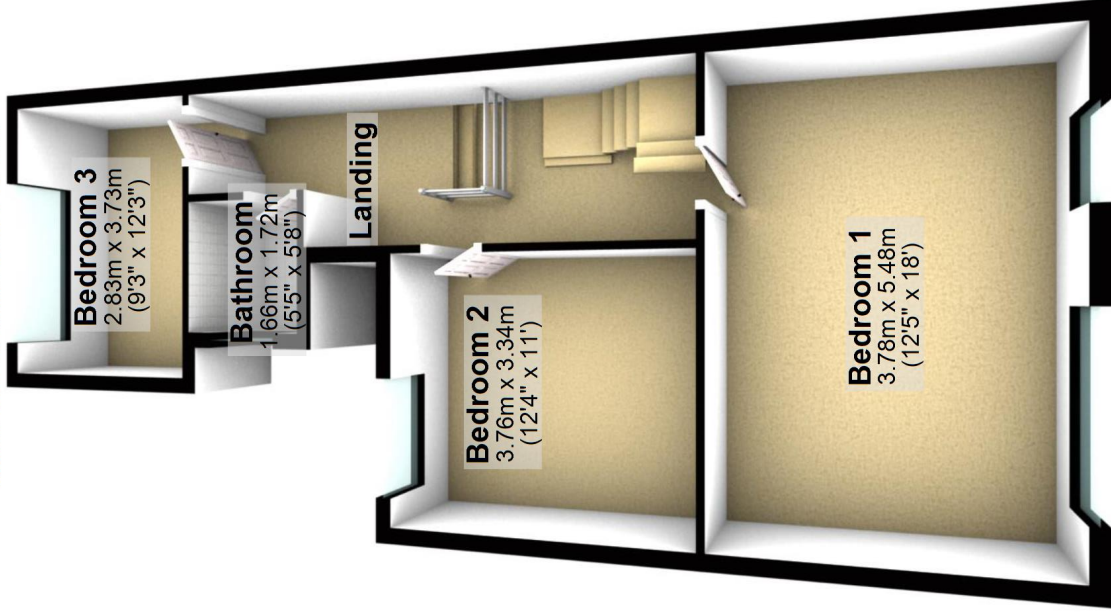
## Ground Floor

Approx. 64.1 sq. metres (690.2 sq. feet)



## First Floor

Approx. 60.7 sq. metres (653.1 sq. feet)



## Second Floor

Approx. 16.4 sq. metres (176.2 sq. feet)



Total area: approx. 141.2 sq. metres (1519.5 sq. feet)