



Flat 2, Frays Court, 10 Swan Road, West Drayton, UB7 7FF

£1,800 Per Calendar Month Unfurnished

- Luxury ground floor apartment
- 2 double bedrooms
- Open plan living room / contemporary fitted kitchen including appliances
- Family bathroom & en-suite shower room
- Gas central heating & double glazing
- Patio
- Communal gardens
- Allocated parking space

Luxury ground floor two bedroom apartment in this development close to the town centre, amenities including shops Elizabeth line railway station & bus routes. The apartment features easy flowing accommodation comprising, open plan living room/kitchen with contemporary styling & range of appliances, principal bedroom with fitted mirrored wardrobes & en-suite shower room, second double bedroom & family bathroom. Other features include own patio & communal gardens, parking space, double glazing, gas fired central heating, laminate flooring & entry phone. The Stockley Business Park, London Heathrow Airport & the motorway network are all within easy reach. Council tax band D. Based on the rent of £1,800 a deposit of £2,076.00 will be required (equivalent of five weeks rent). Available from 21st August 2025 on a 12 month tenancy.



SCAN TO APPLY
www.rwhitley.co.uk/tenancy-application/

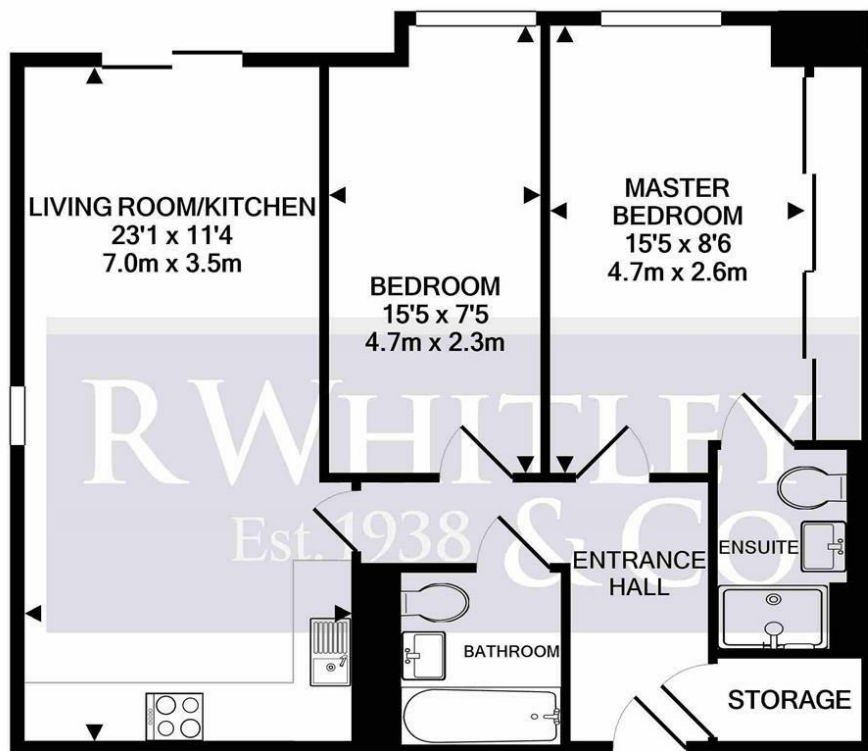
Energy Efficiency Rating		
	Current	Potential
Very energy efficient - lower running costs		
(92 plus) A		
(81-91) B	85	85
(69-80) C		
(55-68) D		
(39-54) E		
(21-38) F		
(1-20) G		
Not energy efficient - higher running costs		
England & Wales	EU Directive 2002/91/EC	

Flat 2, Frays Court 10 Swan Road UB7

£1,800 Per Calendar Month

RWHITLEY & Co

Est. 1938



TOTAL APPROX. FLOOR AREA 666 SQ.FT. (61.9 SQ.M.)

Whilst every attempt has been made to ensure the accuracy of the floor plan contained here, measurements of doors, windows, rooms and any other items are approximate and no responsibility is taken for any error, omission, or mis-statement. This plan is for illustrative purposes only and should be used as such by any prospective purchaser. The services, systems and appliances shown have not been tested and no guarantee as to their operability or efficiency can be given
Made with Metropix ©2020



For clarification we wish to inform prospective tenants that we have prepared these particulars as a general guide only. No responsibility is taken for any errors, omissions or mis-statements. The property may be left furnished, part furnished or unfurnished and it should not be assumed that the furnishings, floor coverings (including fitted carpets), curtains, blinds and other window dressings, furnishing (fitted or otherwise) and the white goods as seen at the time of viewing are to be included in the tenancy. These particulars do not constitute nor constitute any part of an offer or contract and are issued upon the understanding that all negotiations are conducted through R Whitley & Co.



01895 424056

lettings@rwhitley.co.uk

Estate House, 40 Station Road, West Drayton, Middlesex, UB7 7DA