

# 20

Autumn Way  
West Drayton  
Middlesex  
UB7 9GE

---

**RWHITLEY**  
Est. 1938 & CO

Guide Price £520,000



- Mid-Terrace House
- Three Bedrooms
- Living Room
- Kitchen/Diner
- Downstairs WC
- Double Glazing
- Two Allocated Parking Spaces
- No Upper Chain

**DESCRIPTION**  
Located on the exclusive 'Drayton Garden Village' development this attractive three bedroom mid-terraced house is offered for sale with no onward chain complications. The property boasts approximately 975 sq ft of generous and well planned accommodation arranged over two floors. To the ground floor there is an entrance hallway, spacious 14'11 x 11'5 living room, WC and kitchen/diner fitted with French doors to the rear garden. Stairs from the entrance hallway lead to the first floor landing which provides access to the generous 15'10 x 11'3 main double bedroom with fitted wardrobes and en-suite shower room, second double bedroom with built in wardrobe, third sensibly sized bedroom and a family bathroom.

**HEATING & HOT WATER**  
A communal district boiler serves the radiator system and provides the domestic hot water.

**WINDOWS**  
UPVC double glazing.

**OUTSIDE**  
Front: Paved pathway to front door with balance laid to lawn.  
Rear: Patio extending to paved pathway leading to the bottom of the garden. Balance laid to lawn. Shed. Rear pedestrian access.  
Two allocated parking spaces in gated area.

**LOCATION**  
Drayton Garden Village is situated within walking distance of the town centre with mainline railway station (with Elizabeth Line). Local shopping (including a Sainsbury's local) and bus routes are all within easy reach. London Heathrow Airport, the motorway network, Stockley Business Park and Uxbridge town centre are all within easy motoring distance.

**RENTCHARGE**  
We understand there is an annual rentcharge payable towards the upkeep of the estate. The amount payable in 2024 was £230.75.\*

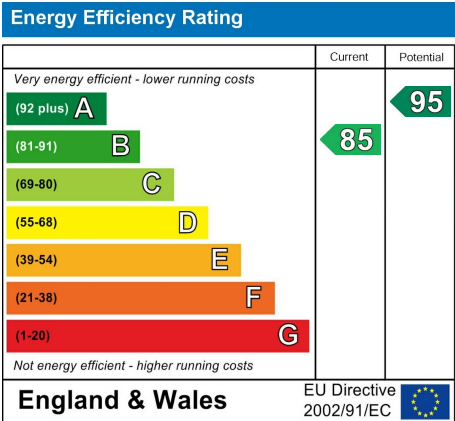
**COUNCIL TAX BAND**  
We understand that the current council tax band is E.

**SERVICES**  
Mains electricity, water and drainage.

**TENURE**  
Freehold.

**VIEWINGS**  
Strictly by appointment with R Whitley & Co.

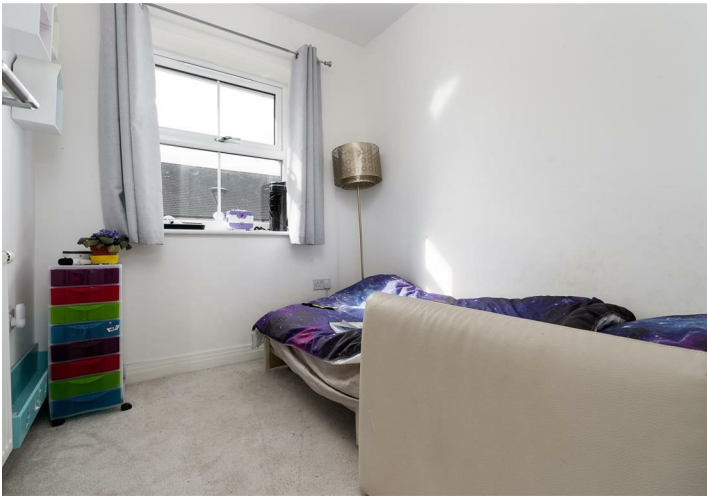
\* The vendor has provided us with the information included but this has not been verified. Buyers must confirm this via solicitors.







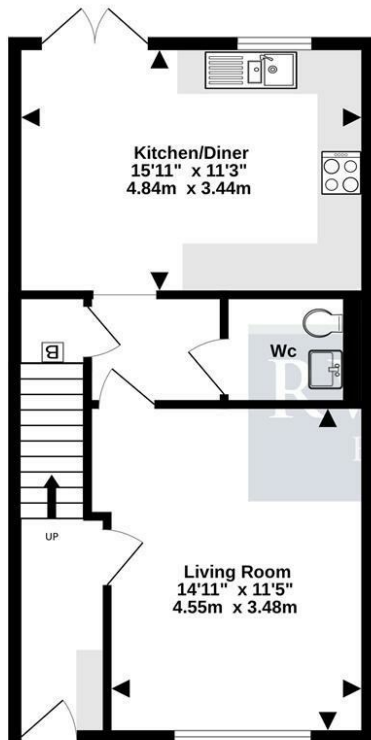




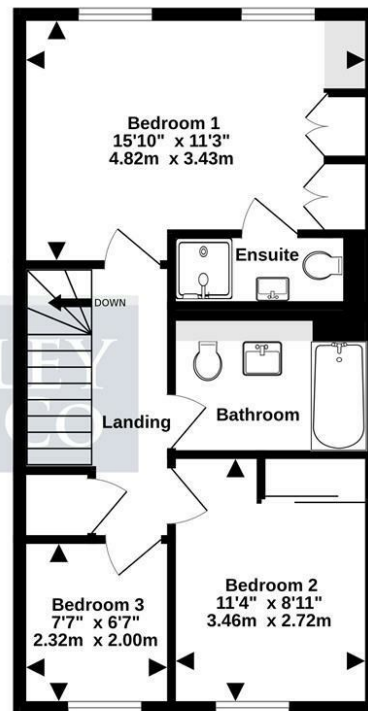




GROUND FLOOR  
491 sq.ft. (45.6 sq.m.) approx.



FIRST FLOOR  
484 sq.ft. (44.9 sq.m.) approx.



TOTAL FLOOR AREA: 975 sq.ft. (90.5 sq.m.) approx.

Whilst every attempt has been made to ensure the accuracy of the floorplan contained herein, measurements of doors, windows, rooms and any other items are approximate and no responsibility is taken for any error, omission or mis-statement. This plan is for illustrative purposes only and should be used as such by any prospective purchaser. The services, systems and appliances shown have not been tested and no guarantee as to their operability or efficiency can be given.

Made with Metropex CS224

# RWHITLEY

Est. 1938 & CO

Every care has been taken with the preparation of these brochures, but they are for general guidance only and complete accuracy cannot be guaranteed. If there is any point which is of particular importance, please ask us for verification or seek professional verification. This brochure does not constitute any part of a contract. All measurements are approximate. Fixtures, fittings and appliances have not been tested. Photographs are reproduced for general information and it cannot be inferred that any item shown is included in the sale. Drawings, sketches and floor plans are for general guidance only and are not to scale.

Estate House, 40 Station Road, West Drayton, Middlesex, UB7 7DA  
**sales@rwhitley.co.uk | 01895 422711 | rwhitley.co.uk**

