

520 HERTFORD ROAD

FLAT A, FIRST FLOOR, LONDON, N9 8AE

*****New Instruction***** Easy Properties London Ltd very pleased to offer this 2 bedroom first flat in Hertford road, N9 Area.

1 two bedroom first floor flat, with reception room, bathroom & toilet and kitchen area, the flat located on Hertford Road in N9 area, partly furnished laminated flooring through, double glazing windows, a 20 minutes walking distance to Ponders End Greater Anglia transport. Ready and available to move in from the 16/07/2021. For more info and viewing please use our online booking service and request a viewing, one of our agent will get in touch with you.

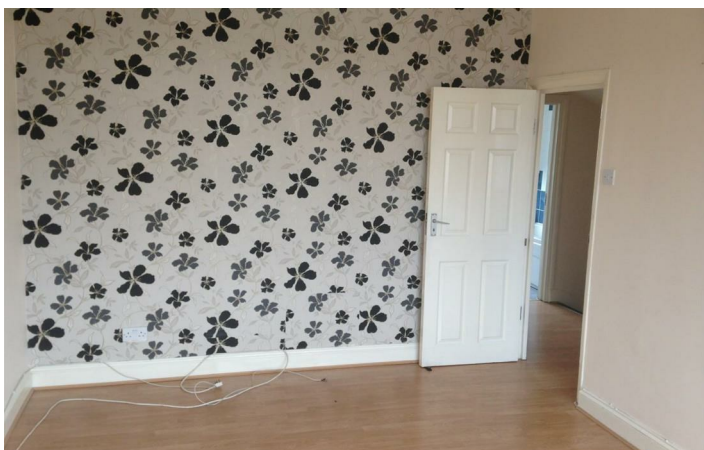
£1,425 Per Month

520 HERTFORD ROAD

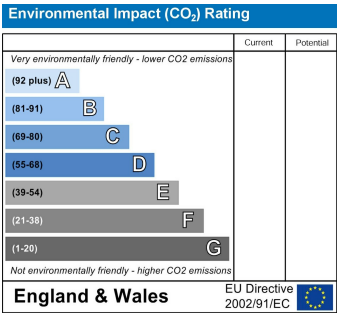
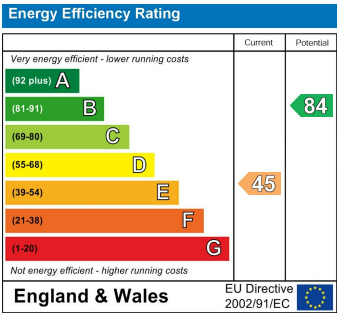
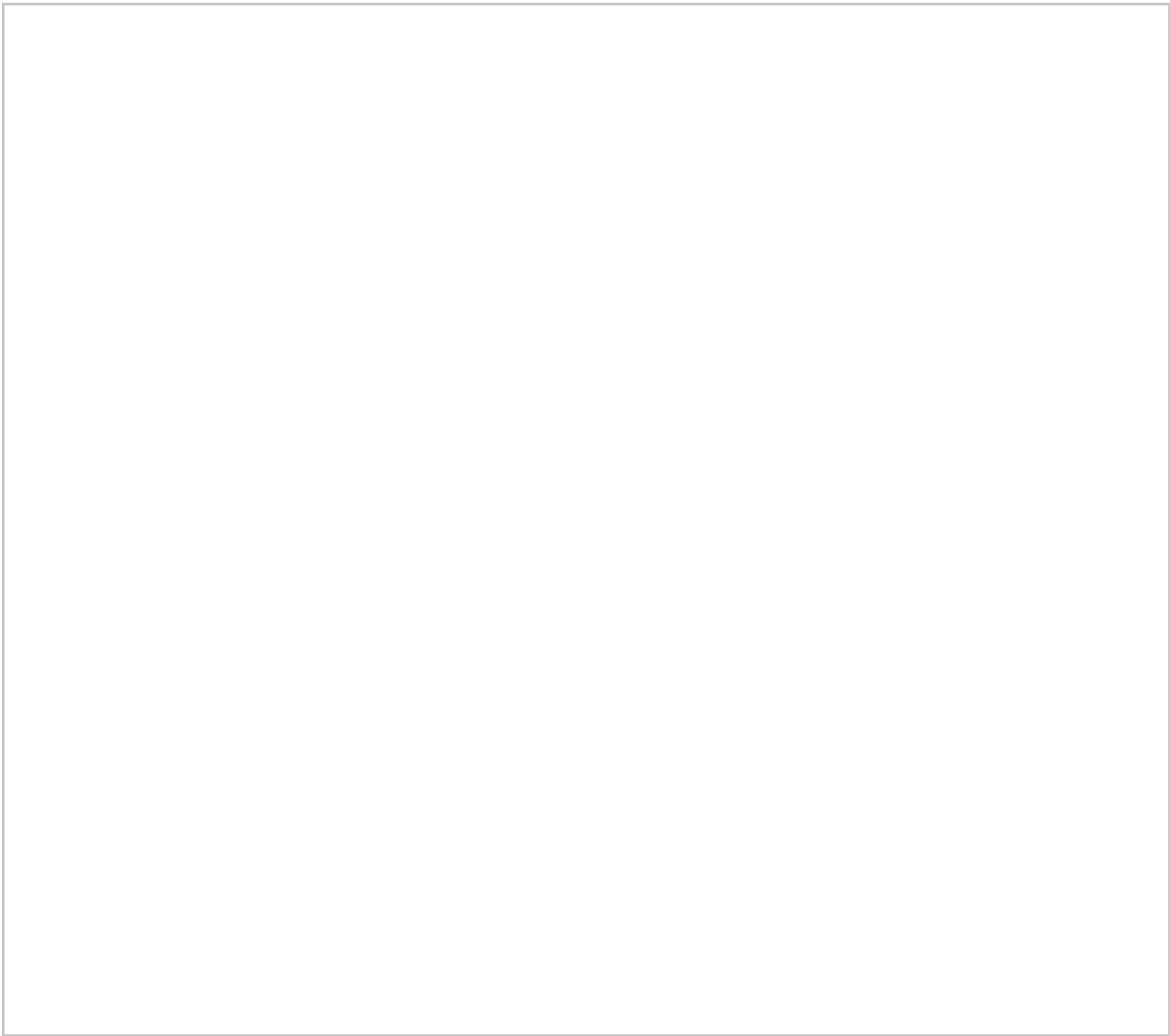
FLAT A, FIRST FLOOR, LONDON, N9 8AE



Directions



Area Map



These particulars, whilst believed to be accurate are set out as a general outline only for guidance and do not constitute any part of an offer or contract. Intending purchasers should not rely on them as statements of representation of fact, but must satisfy themselves by inspection or otherwise as to their accuracy. No person in this firms employment has the authority to make or give any representation or warranty in respect of the property.

