

# Rolfe East



High Street, Hounslow, TW3 1AJ

£1,500 PCM

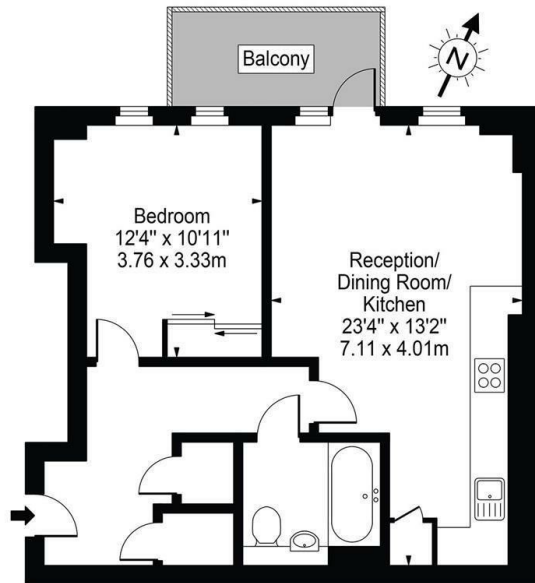
- AVAILABLE STRAIGHT AWAY
- SUPERB TRANSPORT LINKS
- CLOSE TO SHOPS AND PARKS
- FURNISHED
- CLOSE TO HOUNSLOW EAST (PICCADILLY LINE)
- BALCONY WITH LOVELY VIEWS
- ONE DOUBLE BEDROOM APARTMENT

289 Northfield Avenue, Ealing, W5 4XB  
020 8579 1111

northfieldslettings@rolfe-east.com  
<https://www.rolfe-east.com/>

## Topaz Apartments, TW3

Approx. Gross Internal Area 547 Sq Ft - 50.82 Sq M



Fourth Floor

For Illustration Purposes Only - Not To Scale Floor Plan by Mira Nikolova Photography

This floor plan should be used as a general outline for guidance only and does not constitute in whole or in part an offer or contract. Any intending purchaser or lessee should satisfy themselves by inspection, searches, enquiries and full survey as to the correctness of each statement. Any areas, measurements or distances quoted are approximate and should not be used to value a property or be the basis of any sale or let.

## Directions

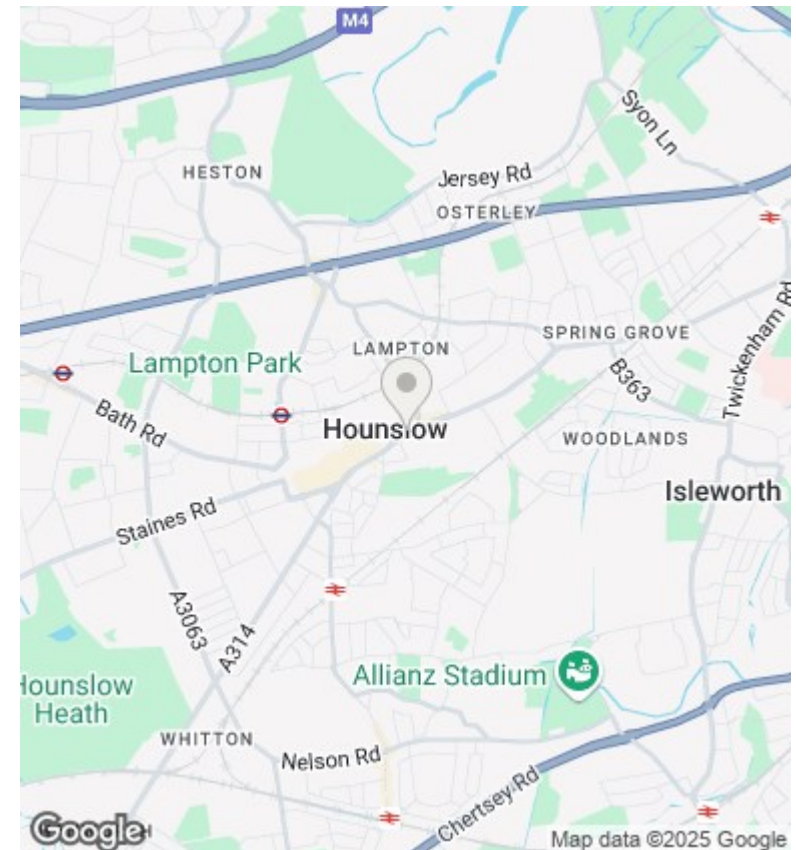
## Viewings

Viewings by arrangement only. Call 020 8579 1111 to make an appointment.

## Council Tax Band

C

## EPC Rating:



Energy Efficiency Rating		
	Current	Potential
Very energy efficient - lower running costs		
(92 plus) <b>A</b>		
(81-91) <b>B</b>		
(69-80) <b>C</b>		
(55-68) <b>D</b>		
(39-54) <b>E</b>		
(21-38) <b>F</b>		
(1-20) <b>G</b>		
Not energy efficient - higher running costs		
<b>England &amp; Wales</b>	EU Directive 2002/91/EC	