

# Rolfe East



## Northfield Avenue, W13

£2,500 pcm

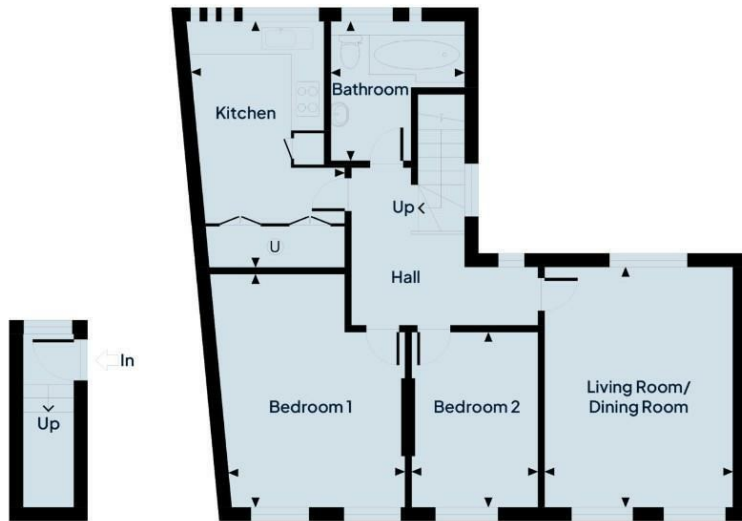
- Stunning brand new luxury development to let
- 3 x two bedroom apartments
- Available to move into in January 2026
- Must be viewed!
- Superb Northfields Location
- 2 x three bedroom apartments
- Unfurnished
- 4 x one bedroom apartments
- Close to public transport links and parks
- Many with private outside space

289 Northfield Avenue, Ealing, W5 4XB  
020 8579 1111

northfieldslettings@rolfe-east.com  
<https://www.rolfe-east.com/>

# Northfield Court

NORTHFIELD AVENUE | W13



Flat 6		
Living Room/Dining Room	14'7X11'5	(4.5m X 3.5m)
Kitchen	14'11X9'7	(4.6m X 2.9m)
Bedroom 1	14'2X11'10	(4.3m X 3.6m)
Bedroom 2	10'8X7'8	(3.3m X 2.3m)
Bathroom	8'6X8'1	(2.6m X 2.5m)

## Viewings

Viewings by arrangement only.  
Call 020 8579 1111 to make an appointment.

## Council Tax Band

New Build

## EPC Rating:

D

Energy Efficiency Rating		
	Current	Potential
<i>Very energy efficient - lower running costs</i>		
(92 plus) <b>A</b>		
(81-91) <b>B</b>		
(69-80) <b>C</b>		
(55-68) <b>D</b>	<b>63</b>	<b>63</b>
(39-54) <b>E</b>		
(21-38) <b>F</b>		
(1-20) <b>G</b>		
<i>Not energy efficient - higher running costs</i>		
<b>England &amp; Wales</b>	EU Directive 2002/91/EC 