

Rolfe East



Clitherow Avenue, W7

£2,100 pcm

- Available end of April
- Two Double Bedrooms
- Unfurnished
- Transport Links Nearby
- Split Level Apartment
- Two Bathrooms
- Close to Local Amenities

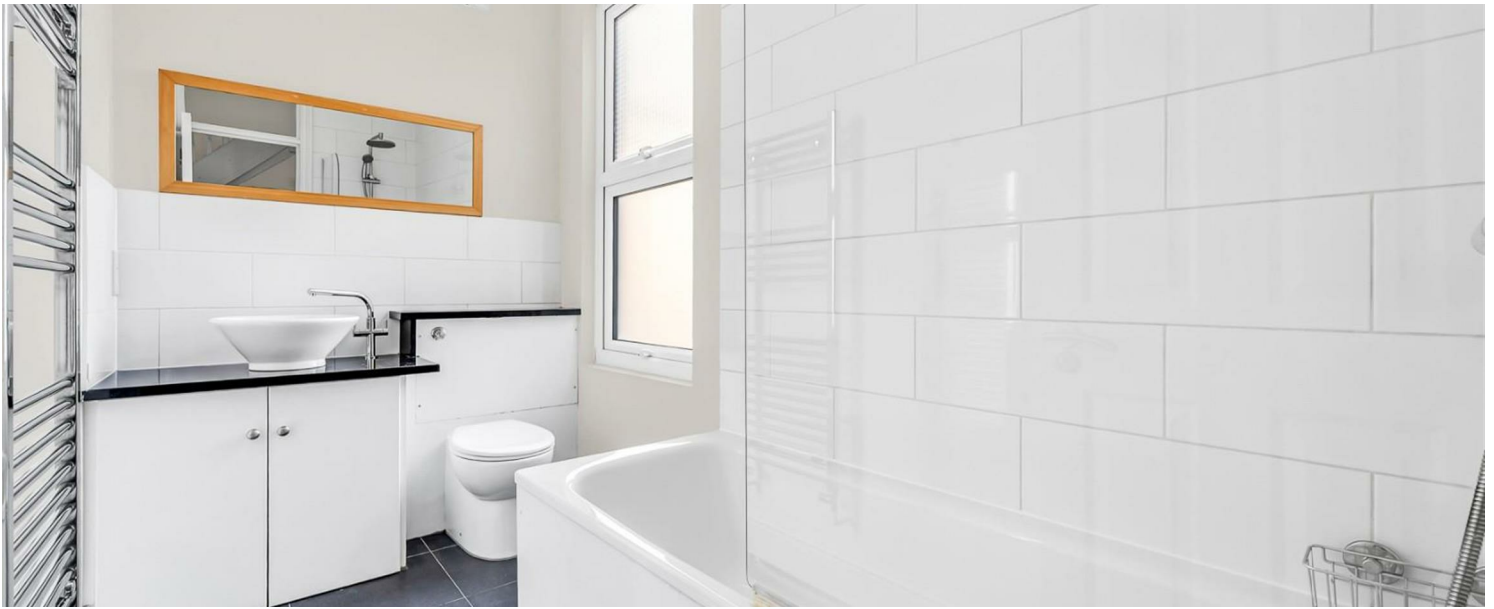
A stunning two double bedroom, two bathroom split level apartment situated on a tree lined road in W7. The bright and airy property comes unfurnished and consists of a spacious open plan reception room with modern kitchen boasting storage and integrated appliances, double bedroom with fitted wardrobes, separate bathroom, and a second double bedroom with en-suite.

Clitherow Avenue is located close to the large green open space of Elthorne Park, Boston Manor station (Piccadilly line) a short walk to the local shops and amenities of both Boston Parade and Northfield Avenue. To arrange your appointment, please contact Rolfe East on 020 8579 1111.



Council Tax Band: C

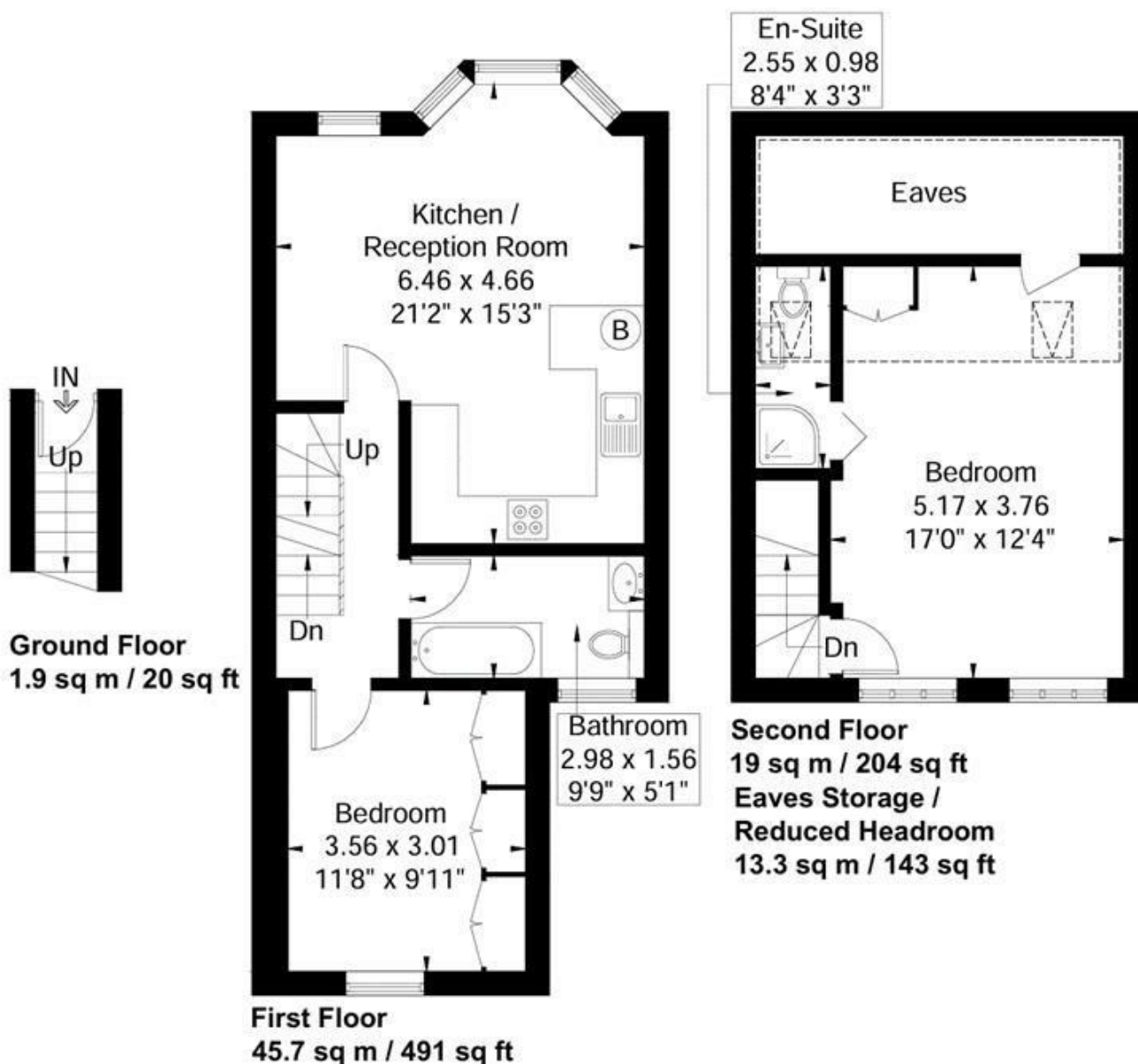






Clitherow Avenue

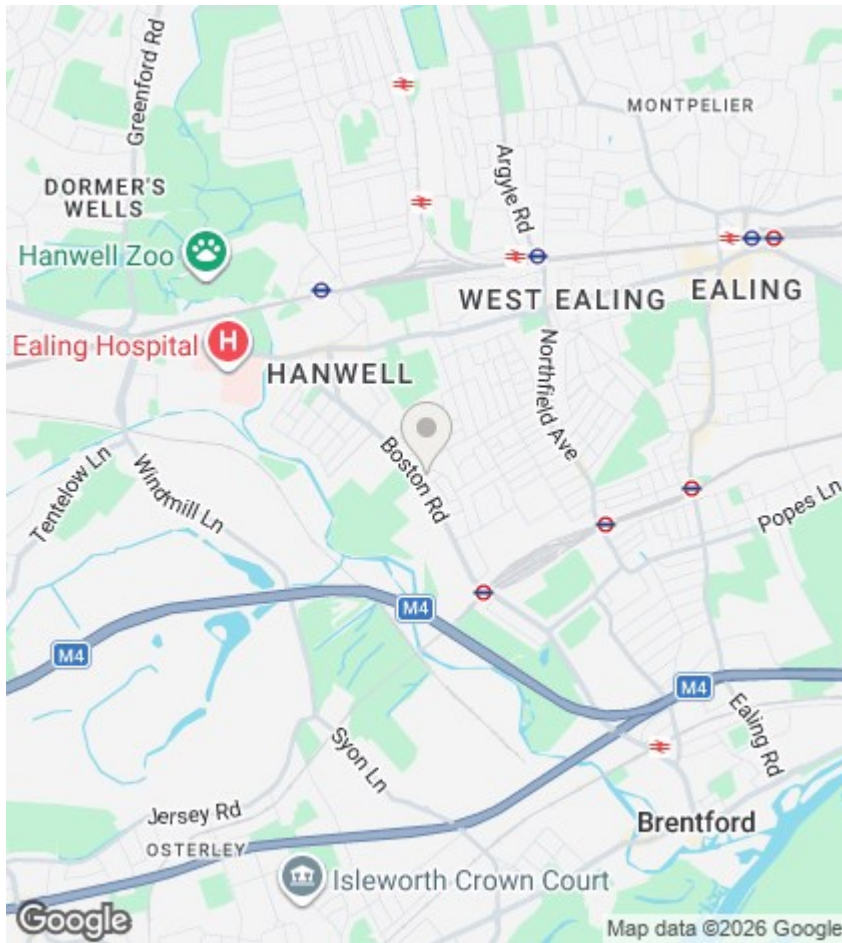
Approximate Gross Internal Area = 66.6 sq m / 715 sq ft
Eaves Storage / Reduced Headroom = 13.3 sq m / 143 sq ft
Total = 79.9 sq m / 858 sq ft



Although every attempt has been made to ensure accuracy, all measurements are approximate.
The floorplan is for illustrative purposes only and not to scale.

© www.perspective.co.uk

Directions



Viewings

Viewings by arrangement only.
Call 020 8579 1111 to make an appointment.

EPC Rating:

C

Energy Efficiency Rating		
	Current	Potential
Very energy efficient - lower running costs		
(92 plus) A		
(81-91) B		
(69-80) C	71	78
(55-68) D		
(39-54) E		
(21-38) F		
(1-20) G		
Not energy efficient - higher running costs		
England & Wales	EU Directive 2002/91/EC	