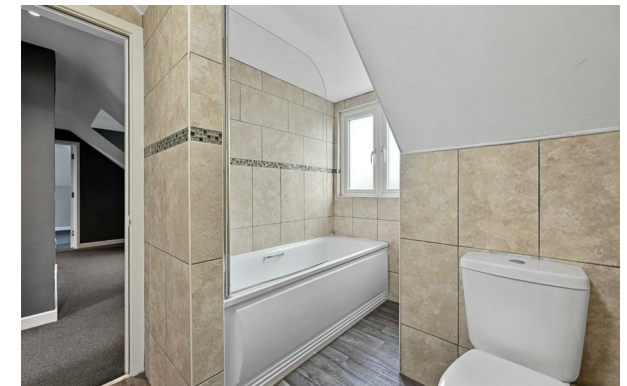


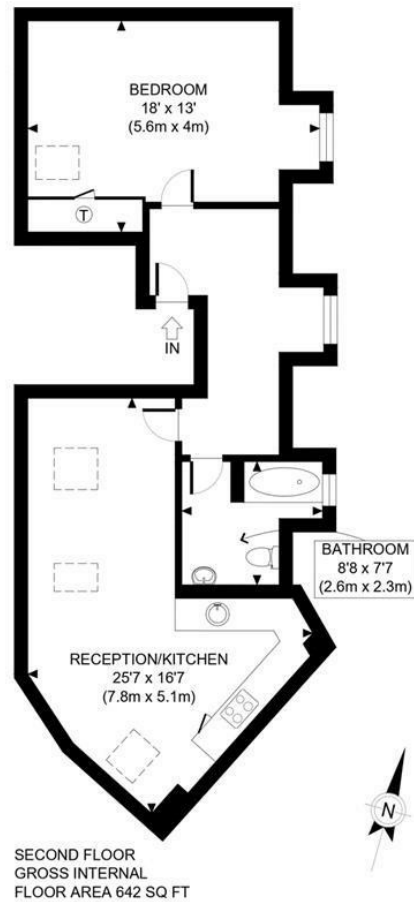
# Rolfe East



Nelson Road, TW2

£1,450 pcm

- Newly refurbished
- plenty of storage
- neutral decor
- wood floors



APPROX. GROSS INTERNAL FLOOR AREA: 642 SQ FT/ 60 SQM



This plan is for illustrative purposes only and should be used as such by any prospective client. Whilst every attempt has been made to ensure the accuracy of the Floor Plan contained here, measurements of the doors, windows, rooms and any other items are approximate and no responsibility is taken for any errors, omissions, or misstatement. The services, systems and appliances shown have not been tested and no guarantee as to the operability or efficiency can be given.

PROPERTY PHOTO PLANS  
ALL STOP AND THE PROPERTY AVAILABLE

## Viewings

Viewings by arrangement only. Call 020 8579 1111 to make an appointment.

## Council Tax Band

New Build

## EPC Rating:

B

Energy Efficiency Rating		
	Current	Potential
<i>Very energy efficient - lower running costs</i>		
(92 plus) <b>A</b>		
(81-91) <b>B</b>	<b>81</b>	<b>81</b>
(69-80) <b>C</b>		
(55-68) <b>D</b>		
(39-54) <b>E</b>		
(21-38) <b>F</b>		
(1-20) <b>G</b>		
<i>Not energy efficient - higher running costs</i>		
<b>England &amp; Wales</b>	EU Directive 2002/91/EC 