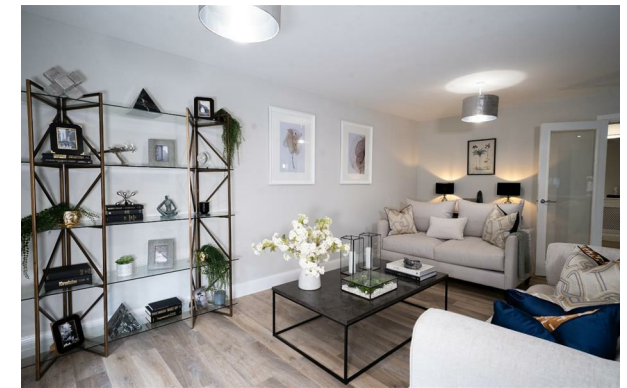


Rolfe East



Evreham Road, Iver, SL0 0BF

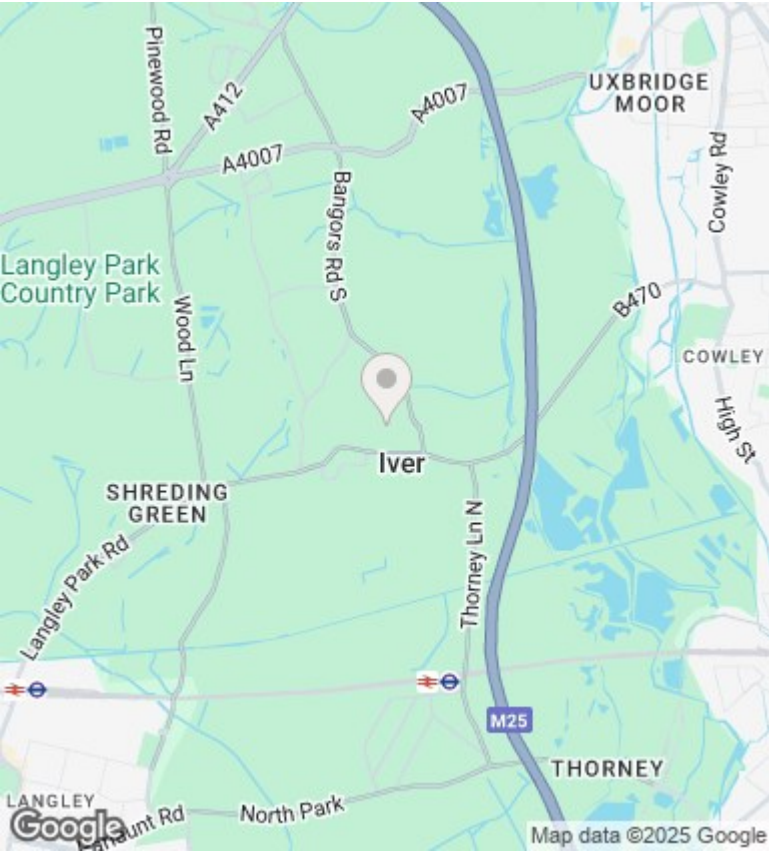
£567,500

- Brand New Apartment
- High Spec Finish
- Two Bedrooms
- Secure Parking for Two Cars

18-19 The Mall, Ealing, W5 2PJ
020 8579 4080

newhomes@rolfe-east.com
<https://www.rolfe-east.com/>

Directions



Viewings

Viewings by arrangement only.
Call 020 8579 4080 to make an appointment.

Council Tax Band

New Build

EPC Rating:

| Energy Efficiency Rating | | |
|---|-------------------------|-----------|
| | Current | Potential |
| Very energy efficient - lower running costs | | |
| (92 plus) A | | |
| (81-91) B | 86 | 86 |
| (69-80) C | | |
| (55-68) D | | |
| (39-54) E | | |
| (21-38) F | | |
| (1-20) G | | |
| Not energy efficient - higher running costs | | |
| England & Wales | EU Directive 2002/91/EC | |