

Rolfe East



The Green, W5

£350,000

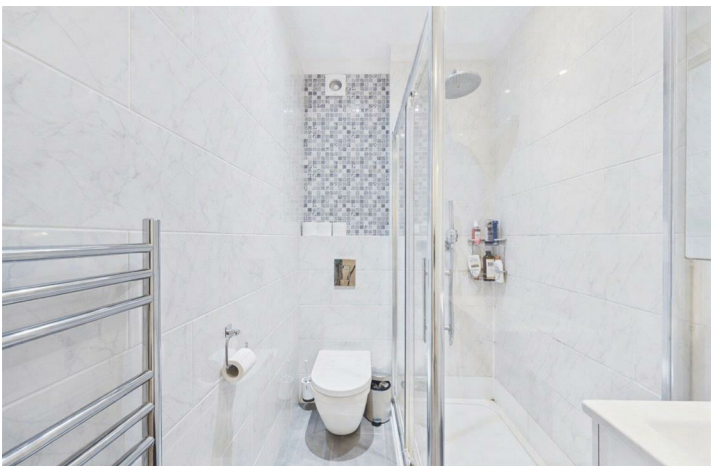
- Double Bedroom Apartment
- Central Location
- Over 100 Year Lease
- Well Presented
- Close to Excellent Transport Links

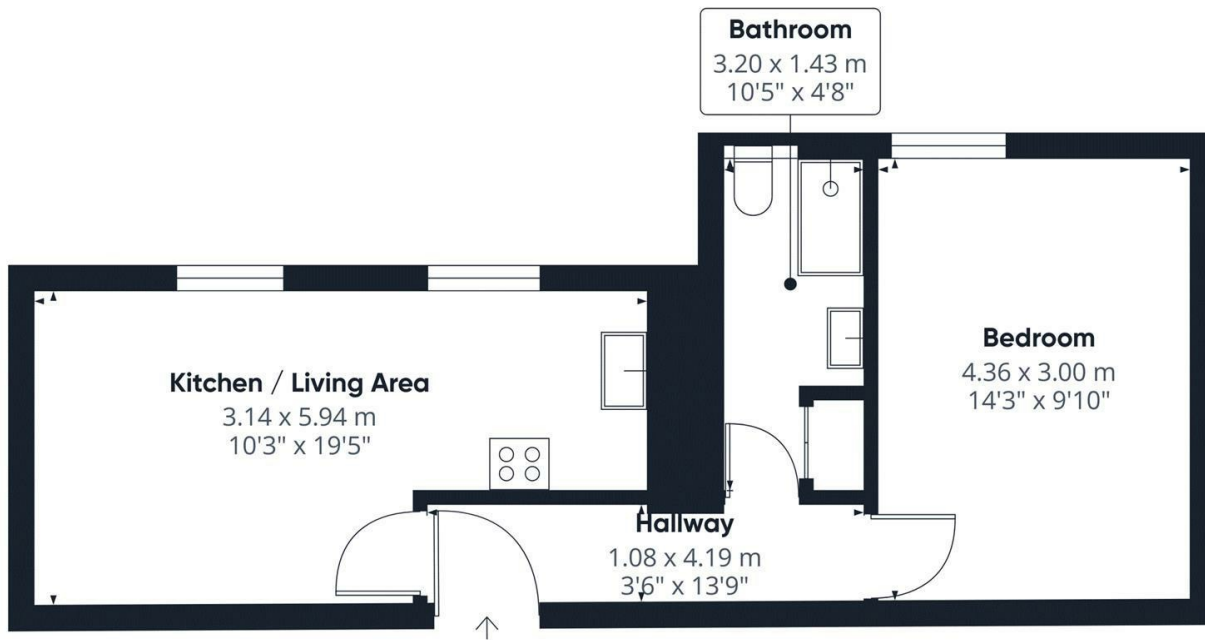
A one double bedroom second floor flat situated opposite Ealing Green. This beautiful property offers a bright and spacious open plan reception with fitted kitchen, one double bedrooms, and a modern bathroom.

Conveniently located, Ealing Broadway is a leading shopping destination with a broad range of branded and high street shops, restaurants and cafés. Ealing Broadway Station (0.3 miles away) is a major single level interchange station served by London Underground, the Elizabeth line, and Great Western Railway. Various bus routes provide access to a plethora of towns such as Richmond, Kingston, Brent Cross, Wembley, Harrow, Shepherds Bush, Southall, Uxbridge and Isleworth. To arrange a viewing, please call Rolfe East on 020 8567 2242.

1 1 1 C

Council Tax Band: C





GLA⁽¹⁾
41.76 m²
449.47 ft²

(1) Finished, above grade

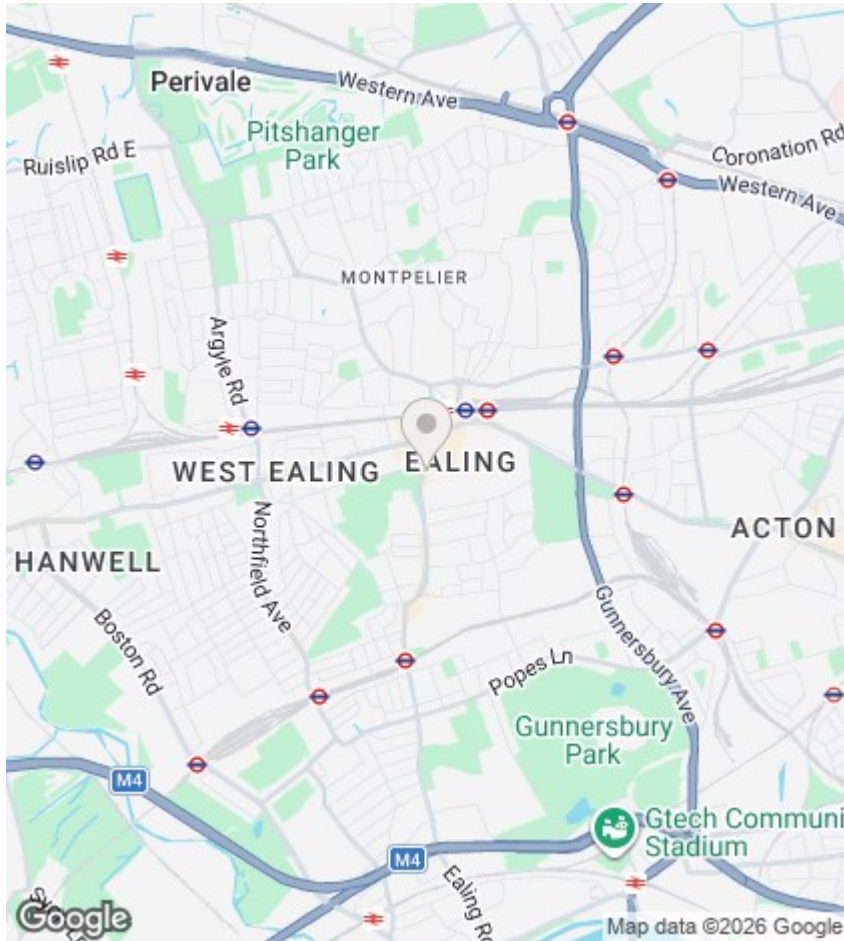
Ext. wall thickness assumed: 15.24
cm/6 in

Calculations reference the ANSI-Z765
standard. Measurements are
approximate and not to scale. This
floor plan is intended for illustration
only.

GIRAFFE 360



Directions



Viewings

Viewings by arrangement only.
Call 020 8567 2242 to make an appointment.

EPC Rating:

C

Energy Efficiency Rating		
	Current	Potential
<i>Very energy efficient - lower running costs</i>		
(92 plus) A		
(81-91) B		
(69-80) C	74	78
(55-68) D		
(39-54) E		
(21-38) F		
(1-20) G		
<i>Not energy efficient - higher running costs</i>		
England & Wales	EU Directive 2002/91/EC 