

Rolfe East



Oliver Grove, SE25

By Public Auction £180,000

- Being sold through online auction
- Buy it now option available
- Buyers fee applies
- Refurbishment required

A chance to acquire this two double bedroom apartment in need of total interior refurbishment. The property comprises large lounge, two double bedrooms, separate kitchen and bathroom. The property has ample storage throughout. Situated on a residential street in popular South Norwood, this when finished would be a commuters dream. Suitable for buy to let investors and first time buyers alike wishing to add value to this spacious apartment. Cash Buyers only. Please call Rolfe East on 0208 993 7755 for more details.

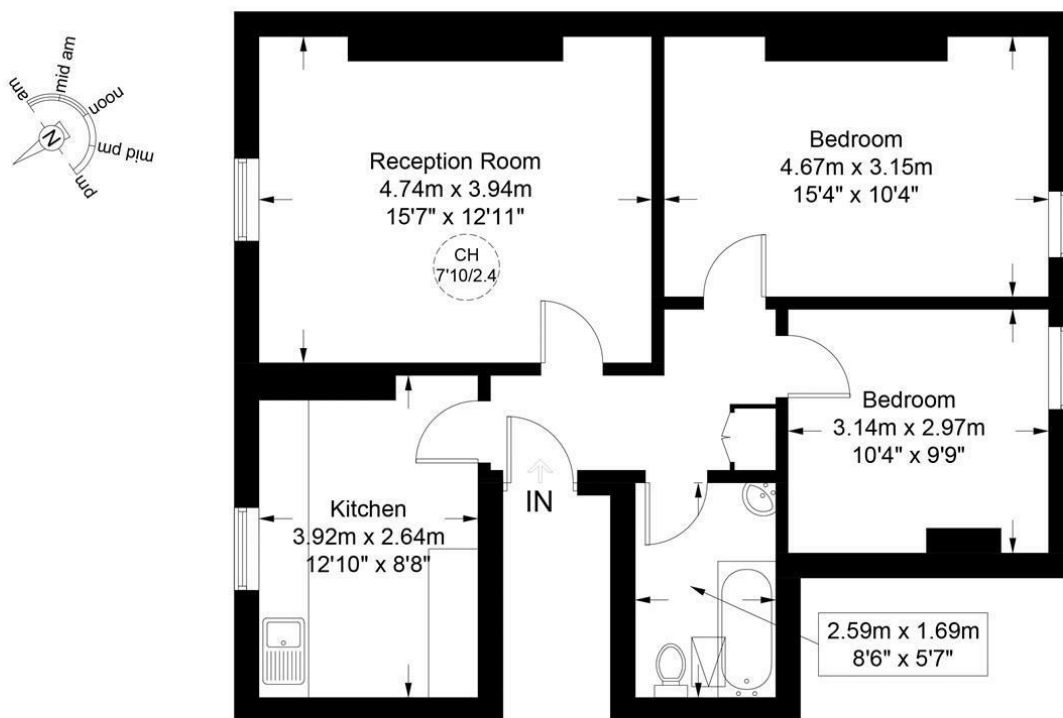


Council Tax Band: C



Oliver Grove, SE25

Approximate Gross Internal Area = 705 sq ft / 65.5 sq m

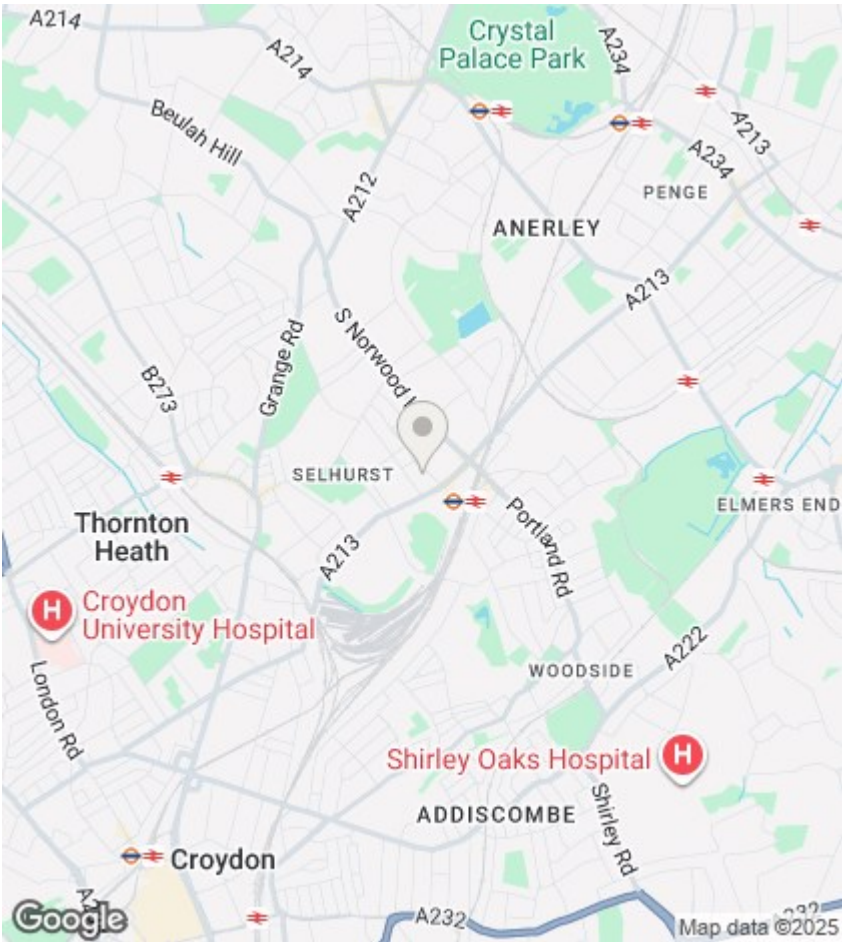


This plan is for layout guidance only and is not drawn to scale unless stated. All dimensions, including windows, doors, and the Total Gross Internal Area (GIA), are approximate. For precise measurements, please consult a qualified architect or surveyor before making any decisions based on this plan.



Certified
Property
Measurer

Directions



Viewings

Viewings by arrangement only.
Call 020 8567 2242 to make an appointment.

EPC Rating:

D

Energy Efficiency Rating		
	Current	Potential
Very energy efficient - lower running costs		
(92 plus) A		
(81-91) B		
(69-80) C		78
(55-68) D	61	
(39-54) E		
(21-38) F		
(1-20) G		
Not energy efficient - higher running costs		
England & Wales		EU Directive 2002/91/EC