

Rolfe East



Northcote Avenue, Ealing, W5 3BS

£2,150

- Two double bedrooms
- Excellent condition
- Private balcony
- Lift to all floors
- First floor flat
- Wood flooring
- Available now
- EPC rating: B / council tax band F

Northcote Avenue, Ealing W5 3BS

A modern and spacious two bedroom/two bathroom apartment presented in excellent condition and featuring a private balcony. Available now and unfurnished this property is located just minutes walk from Ealing Broadway Station.

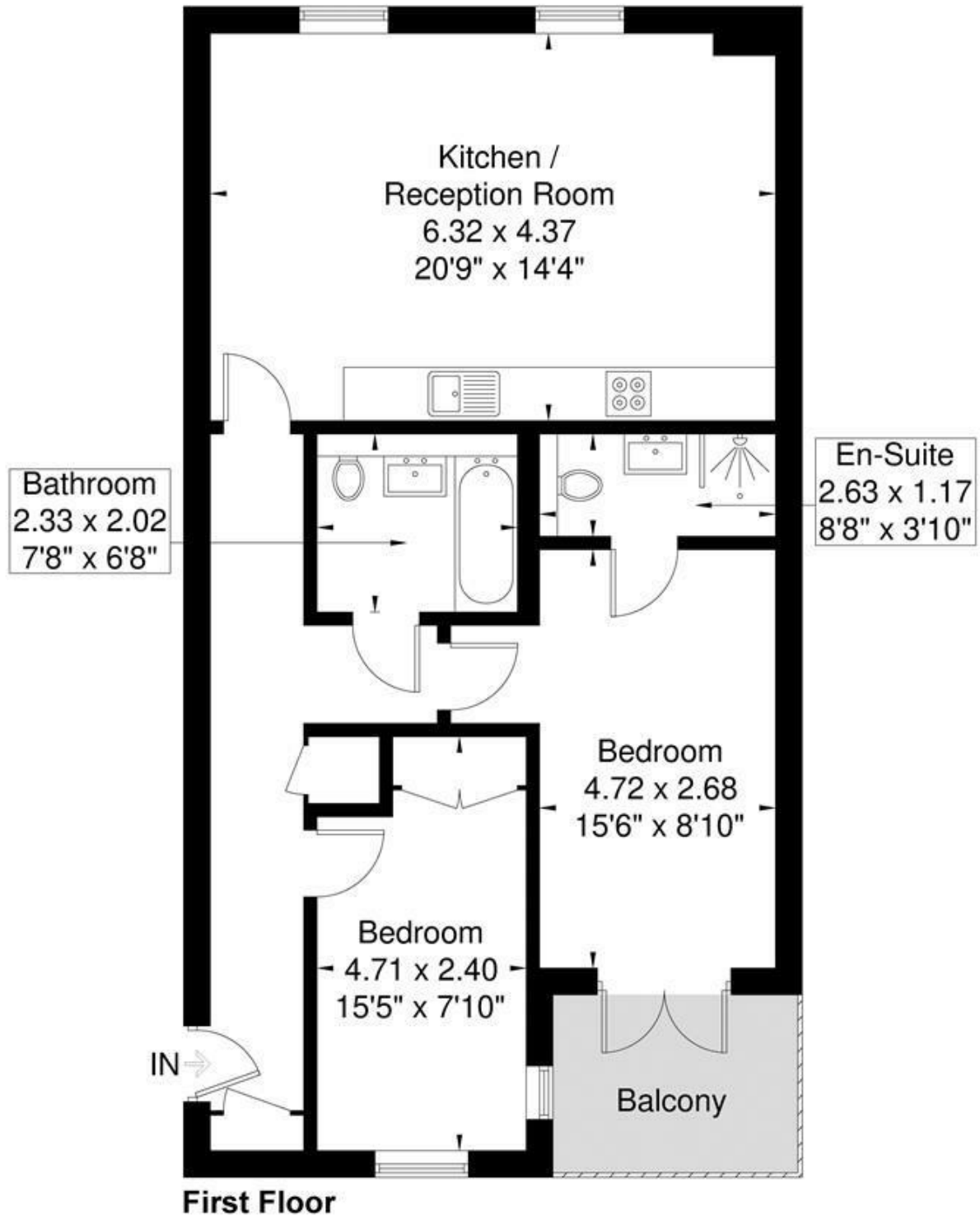


Council Tax Band: F



Tunstall Court

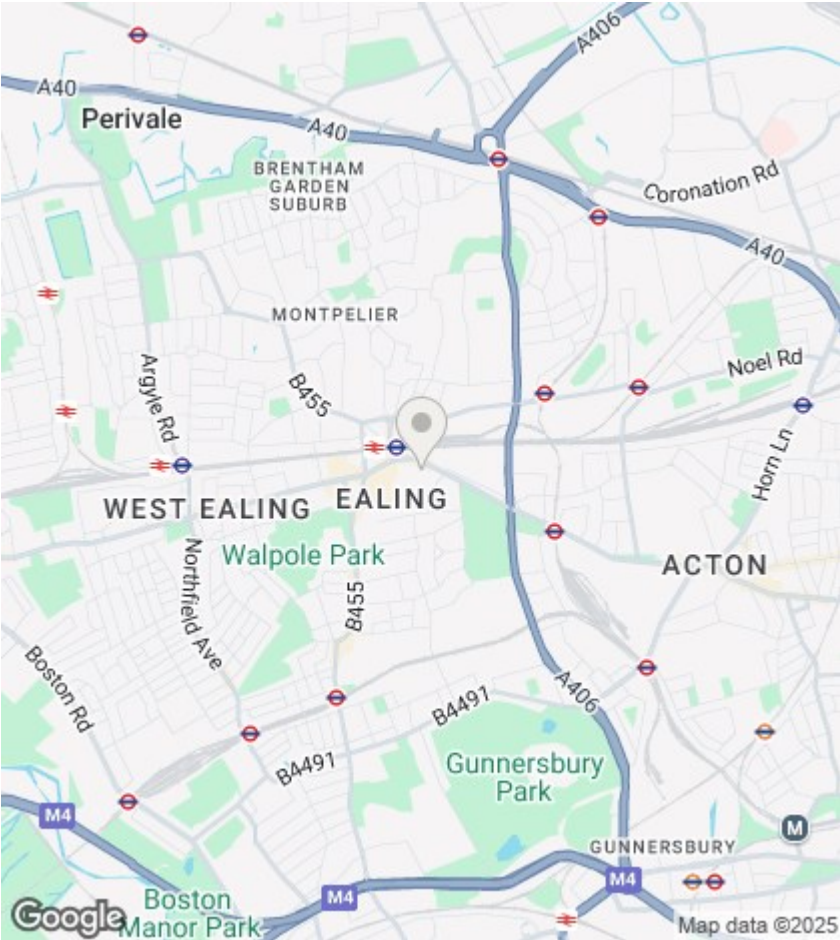
Approximate Gross Internal Area = 73.9 sq m / 795 sq ft



Although every attempt has been made to ensure accuracy, all measurements are approximate.

The floorplan is for illustrative purposes only and not to scale.

© www.perspective.co.uk



Directions

Viewings

Viewings by arrangement only. Call 020 8567 2242 to make an appointment.

EPC Rating:

Energy Efficiency Rating		
	Current	Potential
Very energy efficient - lower running costs		
(92 plus) A		
(81-91) B		
(69-80) C		
(55-68) D		
(39-54) E		
(21-38) F		
(1-20) G		
Not energy efficient - higher running costs		
England & Wales		EU Directive 2002/91/EC