

Rolfe East



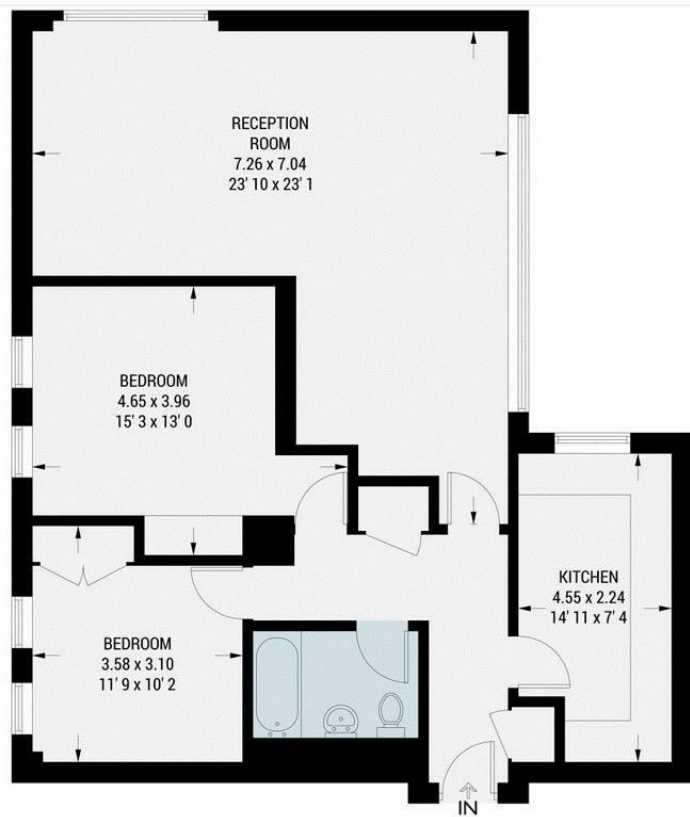
The Knoll, Ealing, W13 8JJ

£525,000

- Two double bedrooms
- Purpose built block
- No upper chain
- Garage in block
- 940 SQ FT / 88 SQM
- Swimming pool
- EPC rating: C / council tax band: C
- Landscaped communal gardens
- Double glazed windows
- Landscaped gardens

18-19 The Mall, Ealing, W5 2PJ
020 8567 2242

ealing@rolfe-east.com
<https://www.rolfe-east.com/>



Directions

18-19 The Mall, Ealing, W5 2PJ
020 8567 2242

Viewings

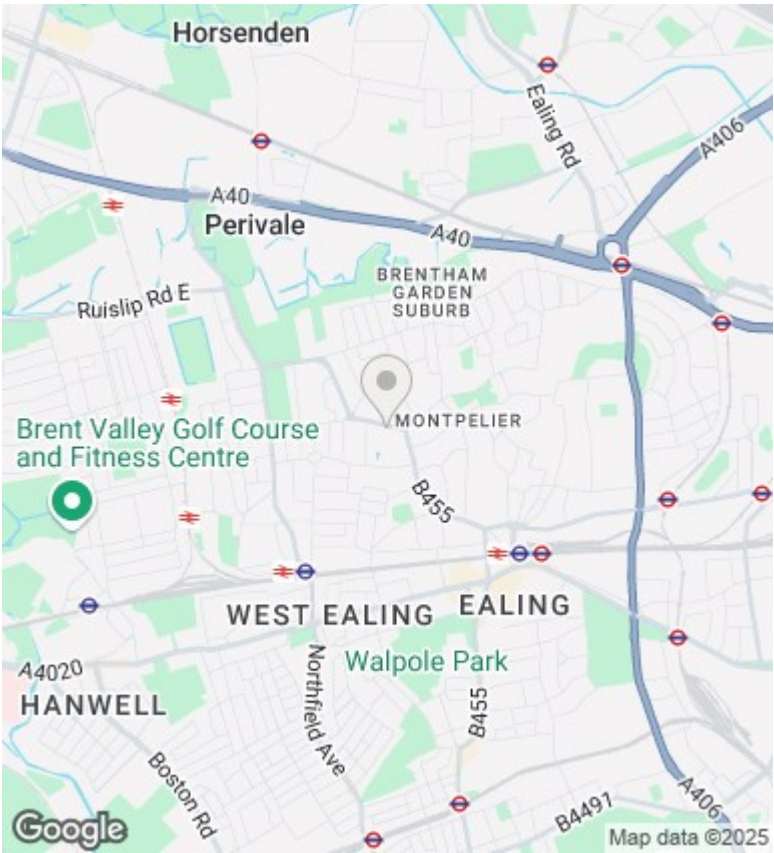
Viewings by arrangement only. Call 020 8567 2242 to make an appointment.

Council Tax Band

E

EPC Rating:

C



Energy Efficiency Rating		
	Current	Potential
Very energy efficient - lower running costs		
(92 plus) A		
(81-91) B		
(69-80) C	70	76
(55-68) D		
(39-54) E		
(21-38) F		
(1-20) G		
Not energy efficient - higher running costs		
England & Wales	EU Directive 2002/91/EC	

ealing@rolfe-east.com
<https://www.rolfe-east.com/>