

Rolfe East



The Knoll, Ealing, W13 8JJ

£525,000

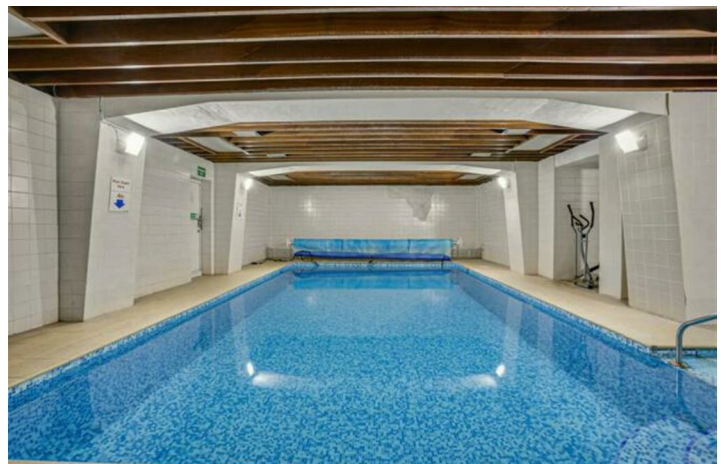
- Two double bedrooms
- Landscaped communal gardens
- Swimming pool
- No upper chain
- Landscaped gardens
- 940 SQ FT / 88 SQM
- Purpose built block
- Double glazed windows
- EPC rating: C / council tax band: C
- Garage in block

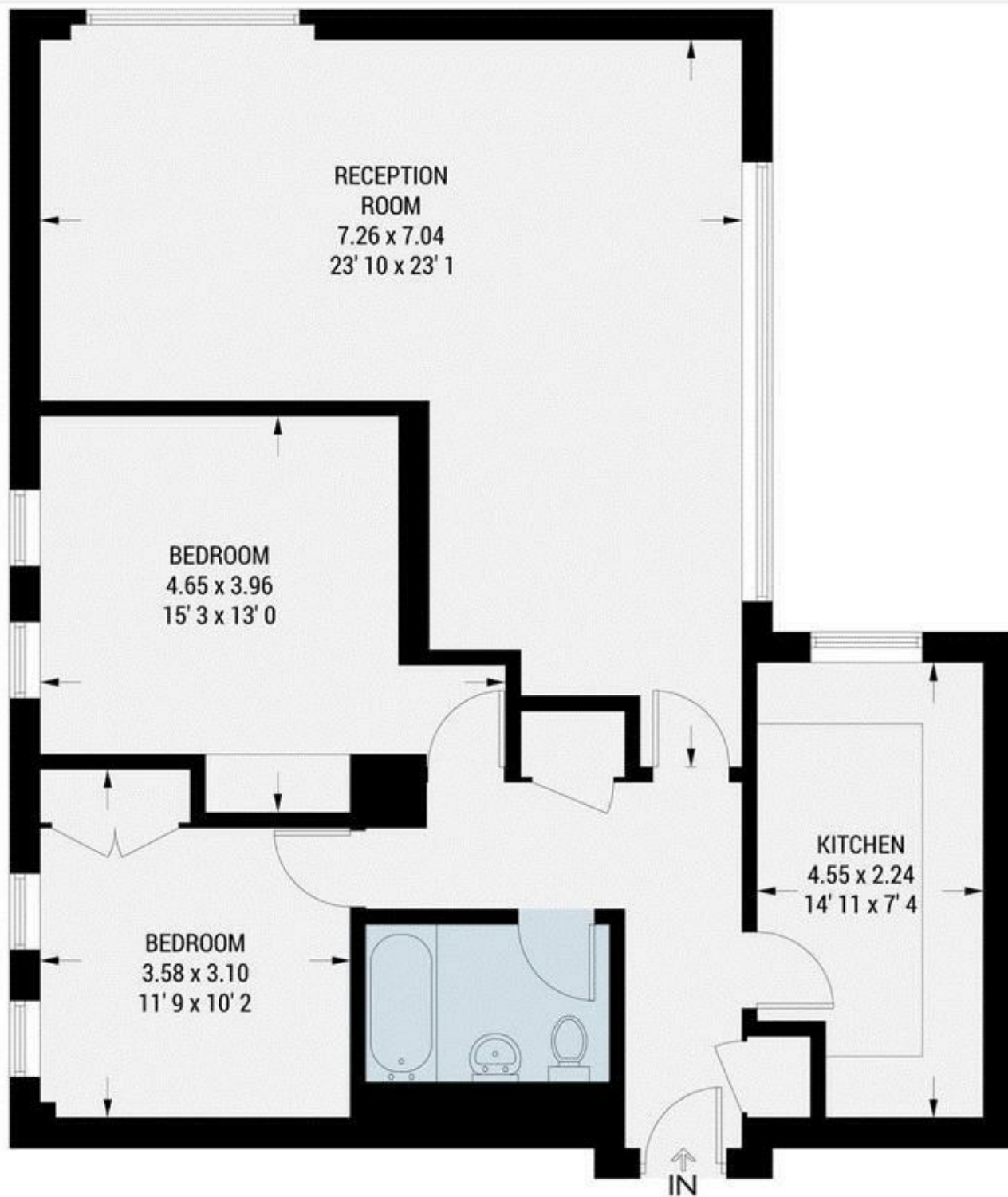
4 The Grange The Knoll, Ealing W13 8JJ

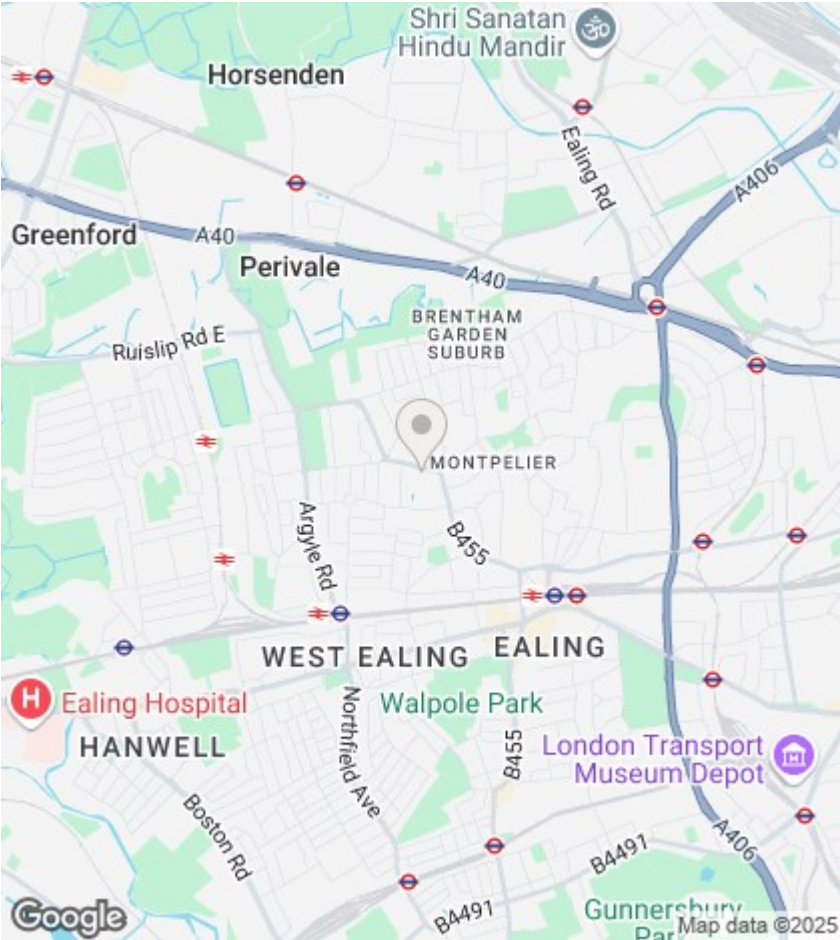
A spacious two double bedroom apartment in this well regarded and maintained development with landscaped communal gardens and swimming pool. The property has ease of access being on the ground floor and the larger than average accommodation is bright with lots of natural light. There is a large reception room with dining area and a separate kitchen.



Council Tax Band: E







Directions

Viewings

Viewings by arrangement only. Call 020 8567 2242 to make an appointment.

EPC Rating:

C

Energy Efficiency Rating		
	Current	Potential
Very energy efficient - lower running costs		
(92 plus) A		
(81-91) B		
(69-80) C	70	76
(55-68) D		
(39-54) E		
(21-38) F		
(1-20) G		
Not energy efficient - higher running costs		
England & Wales		EU Directive 2002/91/EC