

Rolfe East



Kenneth Way, Ealing, W5 2TS

£600,000

- Two double bedrooms
- Two bath/shower rooms
- Excellent condition throughout
- Offered with no upper chain
- Modern contemporary design
- Private balcony/terrace
- Walking distance to multiple stations
- EPC rating: B / council tax band: E

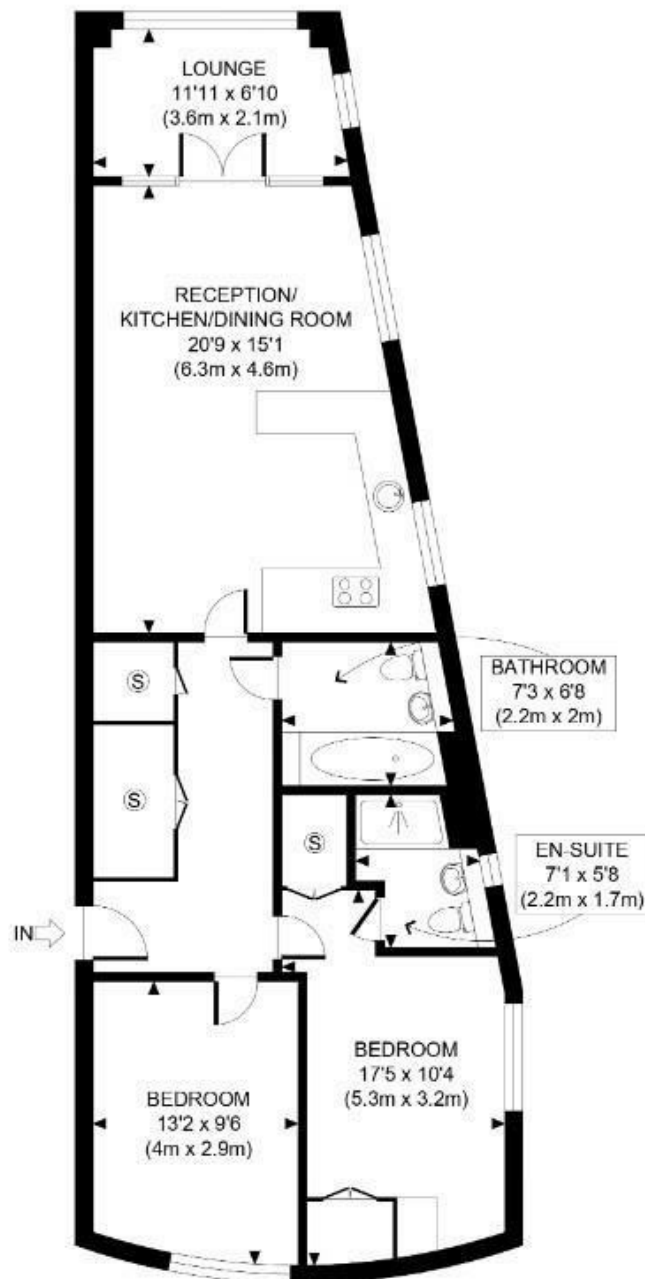
Relfh Court Kenneth Way, Ealing W5 2TS

A beautiful apartment boasting modern and contemporary design and featuring a dual aspect open plan living/dining/kitchen space which opens onto the winter garden/balcony, two double bedrooms, one of which is ensuite, large entrance and lots of built in storage. Forming part of this well kept modern development just 5 minutes walk to North Ealing Station the property is available with no upper chain.

 2  2  1  B

Council Tax Band: E





FIRST FLOOR
GROSS INTERNAL
FLOOR AREA 896 SQ FT

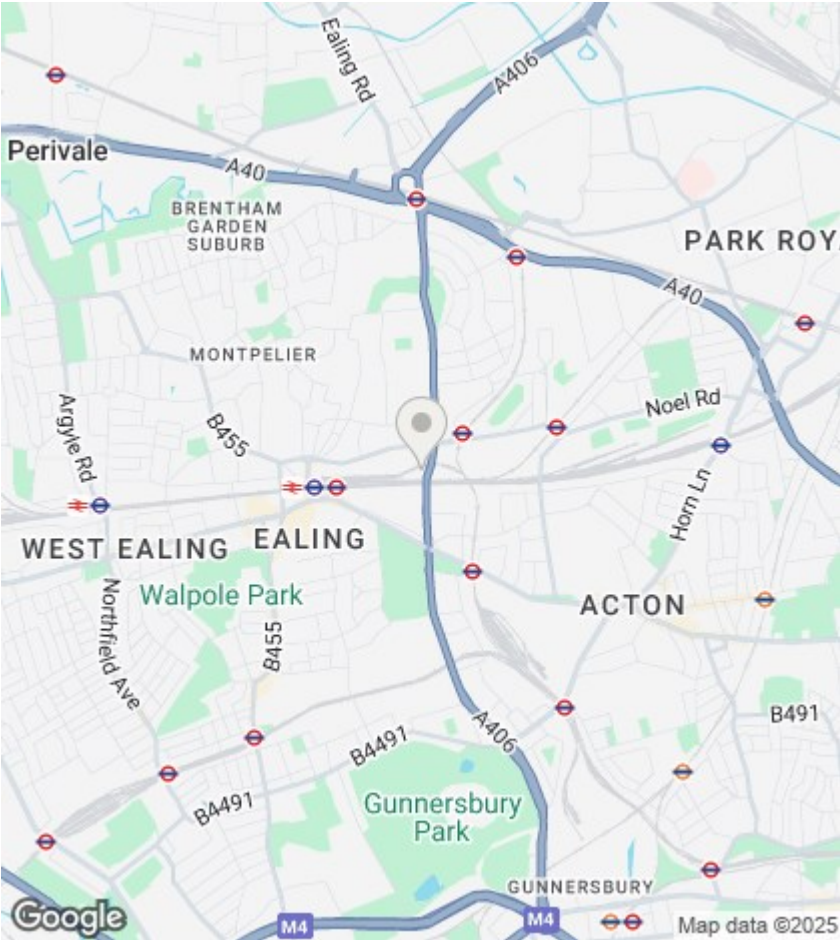


APPROX. GROSS INTERNAL FLOOR AREA: 896 SQ FT/ 83 SQM

Rolfe East

This plan is for illustrative purposes only and should be used as such by any prospective client. Whilst every attempt has been made to ensure the accuracy of the Floor Plan contained here, measurements of the doors, windows, rooms and any other items are approximate and no responsibility is taken for any errors, omissions, or misstatement. The services, systems and appliances shown have not been tested and no guarantee as to the operability or efficiency can be given.

PROPERTY PHOTO PLANS
END. STEP DRIP FOR PROPERTY MEASUREMENTS



Directions

Viewings

Viewings by arrangement only. Call 020 8567 2242 to make an appointment.

EPC Rating:

B

Energy Efficiency Rating		
	Current	Potential
Very energy efficient - lower running costs		
(92 plus) A		
(81-91) B	84	84
(69-80) C		
(55-68) D		
(39-54) E		
(21-38) F		
(1-20) G		
Not energy efficient - higher running costs		
England & Wales	EU Directive 2002/91/EC	