

Rolfe East



Somerset Road, Ealing, W13 9PB

£890,000

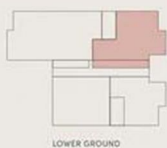
- a collection of elegant residences located a few steps away from the leafy Walpole and Lammas parks in West Ealing
- Prime location
- Modern design
- Opulent fixtures and wood flooring throughout

MARGLOBAL

BUILDING A LOWER GROUND GROUND FLOOR

APT No. A.1 3-BEDROOMS DUPLEX

258 SQ FT / 116.9 SQ M
EXCLUDING TERRACE



LOWER GROUND



GROUND FLOOR



LOWER GROUND



GROUND FLOOR

Disclaimer: All pictures, plans, layouts, information, data and details included in this brochure are illustrative only and may change at any time up to the final built status in accordance with final designs, the project, regulatory approvals and planning permissions. All accessories and interior finishes such as wallpaper, chandeliers, furniture, electronics, white goods, curtains, hore and soft furnishings, elements, fixtures, gym, swimming pool(s) and other elements displayed in the brochure, or within the or apartment or between the plot boundary and the unit, are not part of the unit and are shown for illustrative purposes only.

Viewings

Viewings by arrangement only. Call 020 8567 2242 to make an appointment.

Council Tax Band:
New Build

EPC Rating: C

Energy Efficiency Rating		
	Current	Potential
Very energy efficient - lower running costs		
(92 plus) A		
(81-91) B		
(69-80) C	78	
(55-68) D		
(39-54) E		
(21-38) F		
(1-20) G		
Not energy efficient - higher running costs		
England & Wales	EU Directive 2002/91/EC	